

RP

TABLE OF CONTENTS

2 From Aleksandra

4 Leotards

8 Ballet Slippers

10 Contemporary & Lyrical

11 Jazz

14 RP Booties

16 RP Palette

18 RP On Pointe

19 Extended Sizes

20 En L'air Collection

22 Jewels Collection

24 Rubin Radiance

26 Spotlight Collection

28 Demi-Pointes

29 Tights

30 Accessories

32 Bags

34 Wellness

36 FLX

42 Get Social

43 Size Charts

It's more than just a job. It's a promise.

There are pivotal moments in life that inspire us to make promises to ourselves, teams and loved ones. This past year put to the test our leadership abilities, agility, adaptability, physical strength, mental strength and talent to find the positive amidst unforeseen challenges.

I am honored and proud to lead RP Group International and the brands it retains - Russian Pointe, FLX and the 5.6.7.EIGHT Podcast, as we evolve and position ourselves for immense growth in the next decade.

For over 22 years, Russian Pointe has been more than a dance supplies business. It's our promise to hundreds of small business owners worldwide to provide the quality innovative products critical for their business's success that has made the real impact on the dance community. It's a privilege to serve dancers around the world by supplying elegant dance products and inspiring them to lead extraordinary lives.

For all of us at FLX, fitness is not just a job or lifestyle. It's a promise. A promise to help others reach peak performance through flexibility and strength equipment and training. Since acquiring FLX in 2019, we have expanded the product line from its originally known product, the Flexistretcher. We have also developed the FLX Instructor Certification Course for online and in-person training, further building an enthusiastic and strong community of Certified FLX Instructors around the world. It's our goal and promise to help everyone "Stretch – Strengthen – Recover." Thank you for being a part of the #FLXfam and being #IamFLXstrong with us!

Our weekly episodes on the 5.6.7.EIGHT Podcast go far beyond dance success stories. We connect with leaders of the dance community to discuss life's ever-changing situations, aha-moments, overcoming obstacles, becoming our best and truest selves and the changes needed in the community to better make dance accessible for all. Thank you for joining us on this journey. It's our promise to always listen and be change agents for more honest and constructive conversations at 5.6.7.EIGHT, The Podcast for People on the Move!

Welcome to 2021 – a year of hope, growth, and promises we are proud to live up to!

Aleksandra Y. Efimova
CEO



A handwritten signature in purple ink that reads 'Aleksandra Efimova'.



F O U N D A





FOUNDATIONS COLLECTION

LEOTARD BASICS EVERY DANCER NEEDS – THEIR FOUNDATION

- Shell: 85% Polyamide, 15% Spandex
- Fully lined front/Shelf Lining (nude): 93% Polyester, 7% Spandex
- Moderate cut leg line

CHILDREN'S U.S. SIZES

YS, YM, YL

LADIES' U.S. SIZES

XS, S, M, L, XL

FOUNDATIONS 1



Fully lined front



FOUNDATIONS 2



Shelf lining



FOUNDATIONS 3



Fully lined front





- Unisex
- 4-way stretch canvas
- 70% Cotton, 25% Polyester 5% Spandex
- Split suede sole
- U-cut vamp without drawstring
- Pre-sewn crisscross elastics with RP logo
- Microfiber lining at toe and heel

VIVANTE - Stretch Canvas
for Ladies, Gentlemen & Children

BALLET SLIPPERS





LADIES' U.S. SIZES*	4 – 12.5	4 – 13.5	4 – 13.5	4 – 13.5	7 – 14
GENTLEMEN'S U.S. SIZES**	4 – 12.5	4 – 13.5	4 – 13.5	4 – 13.5	7 – 14
CHILDREN'S U.S. SIZES	12 – 3.5	12 – 3.5			

* Ladies: add 1 size to your street shoe size.

** Gentlemen: add 2 sizes to your street shoe size.

BEST-SELLER FOR A REASON!

With outstanding arch conformity, this stretch slipper truly showcases your feet!

pippalottalotta

★★★★★

This is definitely the best slipper I have ever had. No gapping, hugs my arches, and makes my feet look their best. They are stretchy in all directions and there are no annoying elastic strings to worry about. I also love that the elastics are already sewn. The fit is amazing and I'm so happy that there is a tan color available now too! I got a pair for my instructor and she loved them as well!

Seeing is believing. Give Vivante a try at your
local RP Retailer - www.russianpointe.com/store-locator/



MINIMA

Foot thong

LADIES' U.S. SIZES

XS, S, M, L

- Nylon / Spandex
- Suede sole, lightly padded insole
- RP logo center patch and elastic

LIGHT TAN

CONTEMPORARY



DARK TAN

COMPASS

Half sole

LADIES' U.S. SIZES

XS, S, M, L, XL

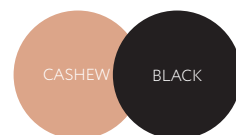
- Leather
- Rounded toe with elasticized binding
- Suede sole, lightly padded insole
- Double elastic embossed with RP logo



MOTION

Jazz shoe

Low-cut. Lightweight.
Arch-hugging.



LADIES' U.S. SIZES	4 – 13
GENTLEMEN'S U.S. SIZES*	4 – 13
CHILDREN'S U.S. SIZES	12 – 3.5

*Gentlemen: Add 1.5 sizes to your street shoe size.

Heather Olsen



I prefer to be a barefoot/sock dancer in my jazz classes. I am IN LOVE with these shoes. Lightweight, beautiful low profile and they showcase my point and arches perfectly. Thank you it's taken me years to find a jazz shoe I love!

- Unisex
- Leather and Neoprene
- Suede toe sole patch
- Treaded 2.5 mm heel
- Cotton toe lining
- RP Purple insole with light heel cushioning



Jazz



CARE EXECUTE
PERSEVERE CONCENTRATE
DREAM OVERCOME
EMOTE SUCCEED
ADMIRE BELIEVE
PERFORM ASPIRE
FOCUS BUILD
BREATHE CONQUER
ENDURE TRUST



INVENT

CAPTIVATE

ENERGIZE

SUALIZE

DEDICATE

PERSIST

CHALLENGE

LEARN

TEACH

APPRECIATE

IMAGINE

INSPIRE

REACH

ACCEPT

ENCOURAGE

ENJOY

PRODUCE

GROW

ACHIEVE

CREATE

ACCOMPLISH

WORK

RP BOOTIES



FLEECE

- Cozy double-sided fleece
- Anti-slip sole with RP logos
- Ruched sides
- Gentle elastic at mid-calf



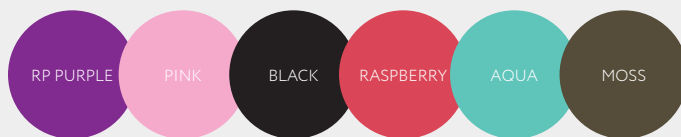
QUILTED

- Nylon, Polyester
- Cushioned insole
- Quilted upper - Acrylic-filled
- Anti-slip sole with RP logos
- Gentle elastic at lower calf
- Toggled drawstring at ankle



LADIES' U.S. SIZES

S (5/6), M (7/8), L (9/10)



LADIES' U.S. SIZES

XS (3/4)*, S (5/6), M (7/8), L (9/10)

* XS available in Raspberry, Aqua, Moss

SPARKLING COLLECTION

Add a touch of sparkle!

- Nylon, Polyester
- Cushioned insole
- Quilted upper - Acrylic-filled
- Anti-slip sole with RP logos
- Gentle elastic at lower calf
- Toggled drawstring at ankle



SPARKLING
PINK

SPARKLING
SILVER

SPARKLING
BLACK

LADIES' U.S. SIZES

XS (3/4), S (5/6), M (7/8), L (9/10)



RP Palette

Cashew

Almond

Hazelnut



ELASTIC

Woven



RIBBON

Matte Satin



TIGHTS

Convertible
Seamless-Toe



VIVANTE

Ballet Slippers



POINTE SHOES

Brava U-Cut, Rubin U-Cut,
Sapfir U-Cut

RP ON POINTE

PERSONALIZE YOUR FIT

WE MAKE A RANGE OF POINTE SHOES FOR A RANGE OF FOOT TYPES, TECHNICAL NEEDS AND ABILITIES.

CHOOSE YOUR MODEL, AND THEN CUSTOMIZE YOUR SIZE, WIDTH, VAMP AND SHANK FOR A PERFECT FIT!

EU SIZES 33 34 34.5 35 36 37 37.5 38 39 40 41 42 43 44 45* 46* 47*

WIDTHS W1 W2 W3 W4 W5 W6**

VAMPS V1 (short)*** V2 (medium) V3 (long)***

* — sizes 45 & 46 available for Rubin, Brava & Muse U-Cut in widths 3-6 and vamp 2.

** — width 6 available in sizes 36-46

*** — vamps 1 and 3 by special order only. Please call for lead time; no returns or exchanges.

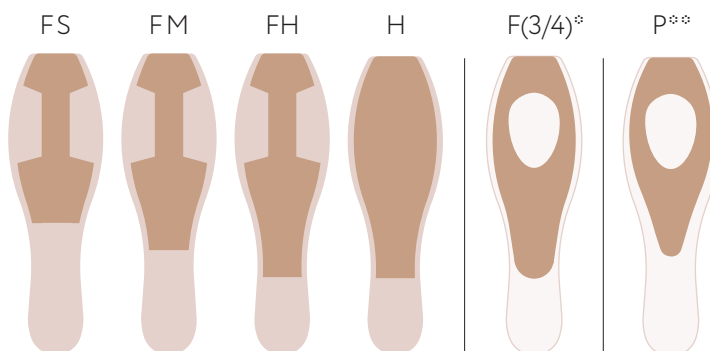
SHANKS

PLIABLE AND LONG-LASTING

The strength of an RP shank depends on its length and design. Dancers should choose shanks that best match the shape of their feet as well as their support needs.

*3/4 Shank (F(3/4)) available for Rubin Radiance only

** Plume Shank (P) available for En L'air Collection only



PRE-ARCHED CONSTRUCTION

RP's Pre-Arched Construction involves an innovative design process throughout the pointe shoe, including the shank, sole and fabric of the shoe. Pre-arching creates a closer alignment with the shape of the foot on pointe, to minimize break-in time and reduce strain on the foot and shank. Pre-Arched Construction can help lower-arched dancers reach full pointe and reduce pressure on the instep for higher-arched dancers.





AVAILABLE IN EXTENDED SIZES 45, 46, 47

RUBIN U-CUT
BRAVA U-CUT
MUSE U-CUT

Larger sizes mean that there's
truly an RP Pointe Shoe for
every foot, even men's!

COLLECTION

En L'air

RISING TO THE OCCASION, AIRY-NESS MEETS PERFORMANCE WITH THE LIGHTWEIGHT CONSTRUCTION AND TRADITIONAL AESTHETIC AND FEATURES OF THE EN L'AIR COLLECTION.

- Natural Leather Sole
- Pleated Platform
- Plume Shank (P)
- U-Cut with drawstring
- Sizes: 33-44
- Widths: 1-6
- Vamp: 1



Featuring the
NEW Plume
shank and a
lower vamp for
less resistance,
more flexibility
and easier
break-in!

BRISÉ

A VERSATILE OPTION FOR TAPERED FEET.

- Medium toe platform
- Tapered box
- Medium crown
- Narrow heel
- ELB: U-Cut with drawstring



ÉCHAPPÉ

A MODERATE SHAPE ACCOMMODATING
EXTRA WIDTH AT THE METATARSAL.

- Wide toe platform
- Slightly tapered box
- Medium crown
- Narrow heel
- ELE: U-Cut with drawstring



SAUTÉ

A BROAD, ROOMY SHOE FOR FULLER FEET.

- Extra-wide toe platform
- Generous box
- Medium crown
- Full heel
- ELS: U-cut with drawstring



THE JEWELS COLLECTION FEATURES A PLEATLESS TOE PLATFORM FOR A POLISHED APPEARANCE AND CRISP EDGES FOR ENHANCED BALANCE ON POINTE. A LOW CROWN AND SLEEK HEEL COMBINE FOR AN ELEGANTLY MOLDED FIT, WHILE SPECIAL NON-SLIP LEATHER SOLES AND NOISE-REDUCING PLATFORM CONSTRUCTION ENHANCE ON-STAGE EXPERIENCE.

JEWELS COLLECTION

Sapfir
Flatters a slender foot!

- Medium toe platform
- Tapered box
- Low crown
- Pre-Arched Construction
- SD: U-cut with drawstring
- SV: V-Cut without drawstring

NOW
AVAILABLE
IN SIZES
45, 46 & 47!



Almaz

Ideal for shallow feet with moderately tapered toes.

- Medium toe platform
- Moderately tapered box, narrows from metatarsal to heel
- Low crown
- AD: U-cut with drawstring
- AV: V-Cut without drawstring



Rubin

Our most popular model!
Suits a variety of foot shapes.

- Wide toe platform
- Slightly tapered box
- Low crown
- Pre-Arched Construction
- RD: U-cut with drawstring
- RV: V-Cut without drawstring

RUBIN RADIANCE





The fit you love from Rubin with a narrower heel and dazzling new features.

- Wide platform
- Slightly tapered box
- Low crown
- Pre-Arched Construction
- F(3/4) shank
- Suede tip at platform
- Double-lined satin
- RRD: U-cut with drawstring





SPOTLIGHT COLLECTION

THE SPOTLIGHT COLLECTION FEATURES A HAND-SCULPTED, PLEATED CLASSICAL BOX, SMOOTHLY FITTING HEEL AND PRE-ARCHED CONSTRUCTION IN EVERY MODEL.

NOW
AVAILABLE
IN SIZES
45, 46 & 47!

BRAVA

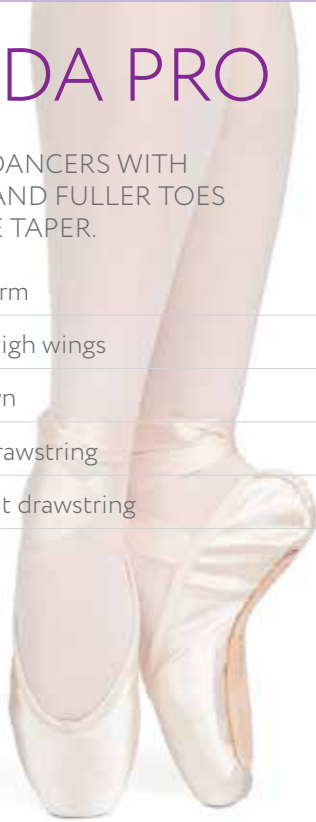
FITS "DIAMOND" FEET WITH EVEN TO SLIGHTLY TAPERED TOES.

- Wide toe platform
- Slightly tapered box, narrows from metatarsal to heel
- Medium crown
- BD: U-cut with drawstring

ENTRADA PRO

BEST SUITED FOR DANCERS WITH A HIGHER INSTEP AND FULLER TOES WITH A MODERATE TAPER.

- Medium toe platform
- Tapered box with high wings
- Medium-high crown
- EPD: U-cut with drawstring
- EPV: V-Cut without drawstring



ENCORE

IDEAL FOR SLENDER, MODERATELY TAPERED FEET OR THOSE WITH A LONGER SECOND TOE.

- Medium toe platform
- Moderately tapered box, narrows from metatarsal to heel
- Medium crown
- ED: U-cut with drawstring



LUMINA

FLATTERS A "RECTANGULAR" FOOT.

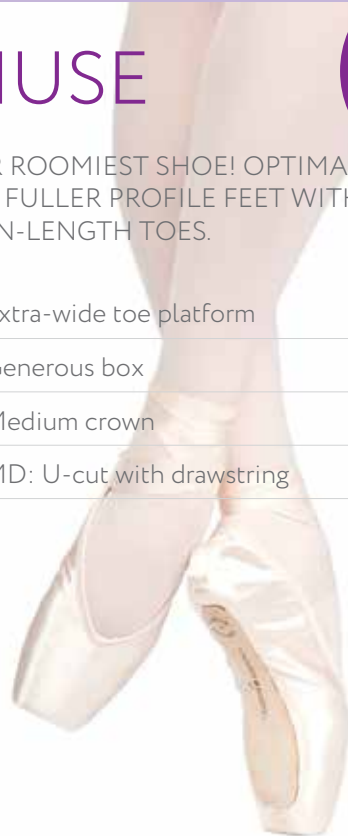
- Wide toe platform
- Very slightly tapered box
- Medium crown
- LD: U-cut with drawstring



MUSE

OUR ROOMIEST SHOE! OPTIMAL FOR FULLER PROFILE FEET WITH EVEN-LENGTH TOES.

- Extra-wide toe platform
- Generous box
- Medium crown
- MD: U-cut with drawstring



NOW
AVAILABLE
IN SIZES
45, 46 & 47!

DEMI-POINTES

Demi-pointes give a gradual pre-pointe transition from ballet slippers to pointe shoes.



- U-cut with drawstring
- Medium vamp
- Low crown
- No shank
- 14 sizes, 6 widths

°Special order only. Please call for lead time: no returns or exchanges.

RUBIN

- Wide toe platform
- Slightly tapered box
- FRD: U-cut with drawstring

ALMAZ

- Medium toe platform
- Moderately tapered box
- FAD: U-cut with drawstring

TIGHTS

IN CLASS OR CENTER STAGE,
EVERY PERFORMANCE
DESERVES THE PERFECT PAIR.



FOOTED for Children

- Seamless legs
- 1-inch knit waistband
- Seamed toes
- Nylon/Spandex
- Individual or 5-pack

CHILDREN'S SIZES
S/M, M/L



Jill Tyson



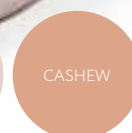
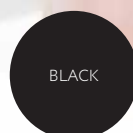
My daughter loves these! VERY soft and the seamless toe has been so much more comfortable with her pointe shoes! Just what we've been looking for!

CONVERTIBLE SEAMLESS-TOE for Ladies & Children

- Seamless legs and toes
- 1/4-inch knit waistband
- Smooth convertible opening under foot
- Nylon/Spandex
- Individual or 5-pack

LADIES' SIZES
S/M, M/L

CHILDREN'S SIZES
S/M, M/L



On Pointe Accessories

From ribbon and elastic to toe pads and spacers – we're keeping you on your toes.

SEWING KIT



- SIGNATURE RP PURPLE CASE
- RP PINK THREAD: WAX-COATED, 75-YARD SPOOL
- TWO WIDE-EYED NEEDLES
- MINI FOLDING SCISSOR
- RP LOGO MAGNET TO KEEP NEEDLES & SCISSOR IN PLACE
- INDIVIDUAL OR 5-PACK
- REFILL THREAD AVAILABLE IN 10-PACK

TOE SPACERS NARROW



S, M, L

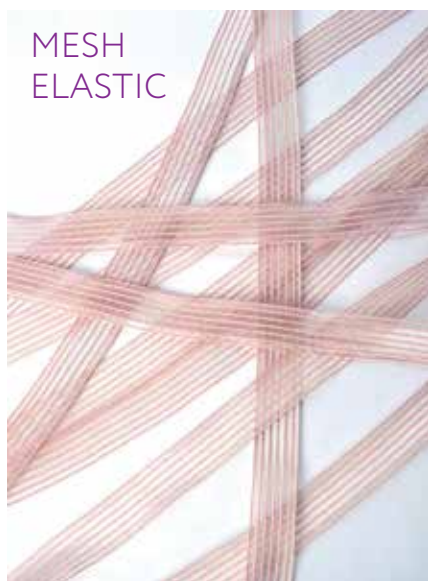
- INDIVIDUAL OR 10-PACK
- SILICONE GEL

TOE SPACERS WIDE



S, M, L

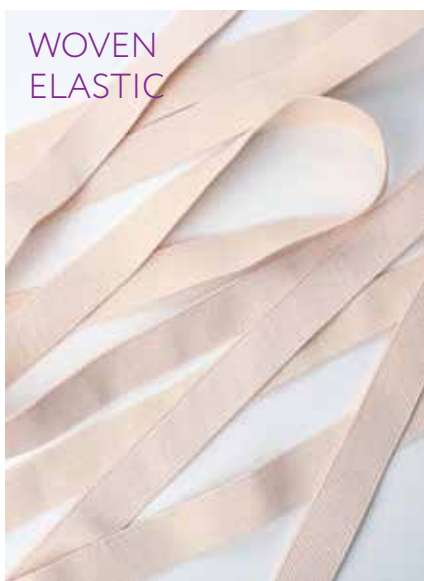
- INDIVIDUAL OR 10-PACK
- SILICONE GEL



MESH
ELASTIC

RP PINK

- STRIP: 7/8"X18"
- BOLT: 7/8"X50 YARDS



WOVEN
ELASTIC

RP PINK

CASHEW

ALMOND

HAZELNUT

- STRIP: 7/8"X18" (SINGLE OR 25-PACK)
- BOLT: 7/8"X50 YARDS



TRADITIONAL
RIBBON

RP PINK

CASHEW

ALMOND

HAZELNUT

- STRIP: 7/8"X2.5 YARDS (SINGLE OR 20-PACK)
- BOLT: 7/8"X100 YARDS



STRETCH
RIBBON

RP PINK

- STRIP: 7/8"X2.5 YARDS (SINGLE OR 20-PACK)



VAMP
ELASTIC

RP PINK

- STRIP: 4"X18"
- SINGLE OR 5-PACK
- WOVEN ELASTIC



TOE
PADS

RP PINK

S, M, L, XL

- INDIVIDUAL OR 5-PACK
- DEEP VAMP
- SOCK-LIKE POLYESTER OUTER, GEL INNER
- LAY-FLAT SEAMS

BAC

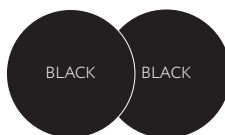
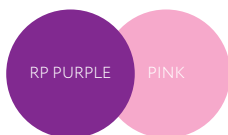
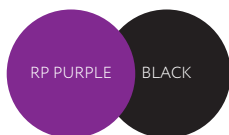
Carry your essentials in style!

MESH BAGS

- Breathable mesh
- Drawstring cord
- Velcro-close front pocket with RP logo
- Individual or 5-pack

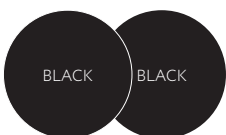


SINGLE HOLDS 1 PAIR OF POINTES
DOUBLE HOLDS 2 PAIRS OF POINTES



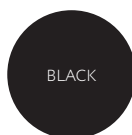
DUFFLE BAG

- 19" x 11" x 10"
- Mesh outer, Polyester lining
- Upper and lower compartment
- Inside and outside pocket



TOTE BAG

- 25" x 11" x 13"
- Water-resistant nylon
- 4 pockets
- Individual or 3-pack



ORIGAMI BACKPACKS

- 22"x12"x5"
- Roll-top with double-buckle closure
- Zipped back entry for easy access to laptop sleeve
- Internal and external pockets
- Ventilated mesh back and straps
- Luggage strap
- Nylon grab handle

TEAL

GREY

RASPBERRY



Get more tips on pointe shoe care at
www.russianpointe.com/perfect-fit

RP WELL- NESS

The tools dancers need to stretch,
strengthen & recover.

RP FOAM ROLLER

RP PURPLE

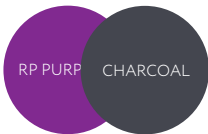
- Dense EVA foam exterior
- Hollow black plastic core
- 13" x 5.5"

Visit the RP YouTube channel
[@RussianPointeInc](#) for inspiration
and tutorials from our go-to wellness
expert, Dr. Lisa M. Schoene.





RP SPIKEY BALLS



- 55mm ball and 80mm ball
- Rubber
- Black drawstring mesh carrying bag



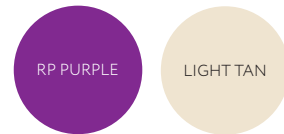
RP BALANCE BOARD



- 39.5cm diameter
- Wood board with plastic bottom
- RP Purple grip with RP logo



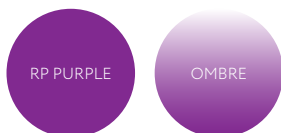
RP TOE TAPE



- 0.75"x15 yards
- Cloth-like adhesive material
- RP logo in a white all-over pattern
- Individual or 10-pack



RP WATER BOTTLE



- BPA-free stainless steel
- Twist-off lid
- 16 oz
- RP logo

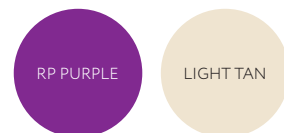


RP EXERCISE BANDS

- Signature RP Purple carrying case with drawstring closure
- Set of 3 strengths - light (RP Purple), medium (grey), heavy (black)
- Latex
- 6"x47"
- Foot exercise insert



RP KINESIOLOGY TAPE



- 1.96"x5.5 yards
- Resistant to perspiration
- Grid-patterned backing for easy cutting
- RP logo in a white all-over pattern
- Individual or 10-pack



RETHINK THE



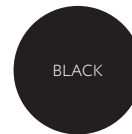
WAY YOU STRETCH™

FLEXISTRETCHER®

HARNESSES THE POWER
OF ELASTIC RESISTANCE.



- Custom designed hardware prevents sliding
- Fully adjustable loops
- Custom strength elastic for ultimate resistance
- Rubber Stoppers keep loop in place and slider piece from falling off
- Neoprene Sleeve with embroidered logo
- Mesh carrying bag



Safely deepen your stretch to maximize results.





STRETCH. STRENGTHEN. RECOVER.

For more information and stretch and strengthening exercises
visit www.flxstrong.com.



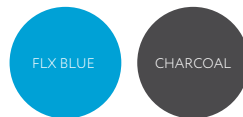
FLX® BALL

A perfect portable tool to add to any training routine!

- 9" ball
- Anti-burst rubber
- Straw included for easy inflation
- Portable and multi-use
- Adjust pressure for varying difficulty
- Improve strength and increase balance, proprioception and body awareness



INFINITY BALL



- 6cm x 12cm
- Silicone
- Contoured shape effectively targets key trigger points
- Portable & durable – built to handle intense pressure for deep massage
- Alleviates pain & restores mobility



MASSAGE ROLLER

A handheld tool for instant relief pre- or post-workout.

- 47.5cm
- Helps relieve tension and reduces soreness, stiffness & pain
- Aids recovery
- A portable, lightweight all-body tool





YOGA BLOCK

Support and deepen your stretch!

- High density EVA for firm support
- Improves balance and alignment
- Portable and lightweight
- Supports body and range of motion
- Versatile and accessible for a variety of skill levels



YOGA WHEEL - SMALL

Massage target areas and enhance your stretch.

- 5" wide, 6" diameter
- Durable PP plastic core, TPE outer
- Improves balance and flexibility and builds core strength
- Alleviates back and shoulder pain and aligns the spine
- Versatile and accessible for a variety of skill levels
- Allows for a full front-body stretch



YOGA WHEEL - LARGE

Safely enhance your stretch and massage your spine.

- 5" wide, 12.6" diameter
- Durable PP plastic core, TPE outer
- Improves balance and flexibility and builds core strength
- Alleviates back and shoulder pain and aligns the spine
- Versatile and accessible for a variety of skill levels
- Allows for a full front-body stretch



GET SOCIAL!



@russianpointebrand



@RussianPointe



@RussianPointeInc



@RussianPointe



@RussianPointe

LEOTARDS LADIES' & YOUTH U.S. SIZING

SIZE	BUST (IN)	WAIST (IN)	HIPS (IN)	GIRTH (IN)
XS	27 – 31	22 – 26	28 – 32	53 – 55
S	28 – 32	23 – 27	29 – 33	55 – 57
M	30 – 34	24 – 28	31 – 35	58 – 61
L	31 – 35	25 – 29	33 – 37	62 – 64
XL	32 – 36	26 – 30	35 – 39	64 – 66
SIZE	BUST (IN)	WAIST (IN)	HIPS (IN)	GIRTH (IN)
Youth S	24 – 28	19 – 23	24 – 28	53 – 55
Youth M	25 – 29	20 – 24	25 – 29	55 – 57
Youth L	26 – 30	21 – 25	26 – 30	58 – 61

TIGHTS LADIES' & YOUTH U.S. SIZING

SIZE	HEIGHT (IN)	WEIGHT (IN)
Adult S/M	58" – 66"	90 – 130lbs
Adult M/L	62" – 71"	110 – 170lbs
Child S/M	39" – 49"	35 – 60lbs
Child M/L	50" – 64"	60 – 95lbs

SHOE SIZE CONVERSION CHART

LADIES' SHOES

U.S. & Canada	4	4.5	5	5.5	6	6.5	7	7.5	8	8.5	9	9.5	10	11	12	13	14
EU	33	34	34.5	35	36	37	37.5	38	39	40	41	42	43	44	45	46	47
UK	2	2.5	3	3.5	4	4.5	5	5.5	6	6.5	7	7.5	8	9	10	11	12

MEN'S SHOES

U.S. & Canada	8	8.5	9	9.5	10	10.5	11	11.5	12	12.5	13	14	15
EU	40	40.5	41	41.5	42	42.5	43	43.5	44	45	46	47	48
UK	7.5	8	8.5	9	9.5	10	10.5	11	11.5	12	12.5	13.5	14.5

CHILDREN'S SHOES

U.S. & Canada	12	12.5	13	13.5	1	1.5	2	2.5	3	3.5
EU	28	28.5	29	29.5	30	30.5	31	31.5	32	32.5
UK	11	11.5	12	12.5	13	14	1	1.5	2	2.5

Size charts show approximations only. Please visit your local retailer to determine your proper sizes for dance shoes.

INSPIRED,
EMPOWERED,
100% YOU.



rpgroupintl.com | russianpointe.com | flxstrong.com | 567eight.com