



Color Guide

A —

CA —

— DE —

— MY


Ballet Rosa

MICROFIBER

01 Noir / 02 Blanc



74 Teal



77 Encre Bleu



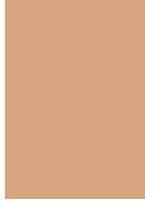
88 Angel Blue



89 Olive



07 Marine



30 Chair



80 Purple



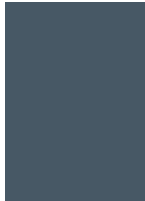
81 True Lavender



90 Rose Ballet



38 Turquoise



47 Gris



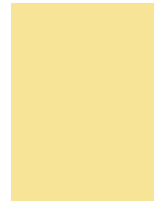
82 Ruby



83 Snorkel Blue



93 French Rose



94 Buttercup



57 Cyclamen



73 Viola



84 Poppy



86 Iris



95 French Blue



96 Medium Orchid

New Colors

MICROFIBER COMPOSITION 90% Polyamide · 10% Elastane

WASH AND CARE

Due to the delicate nature of certain materials, kindly wear the dancewear garments with great care. Keeping your Ballet Rosa products in good shape depends solely on you. Each material has different quality standards. We suggest you respect the wash care labels and the care instructions stated below. The brand will not be liable for any damages caused by excessive or inappropriate usage.

Attention: intense sweating combined with the high temperature of the body over long periods. Color references are merely informative. Colors may vary slightly depending on material and dying batch.

WASH INSTRUCTIONS



May be machine washed at 30° C
Do not iron
Use mild detergent. Do not bleach.
Do not tumble dry
Allow to dry flat
Suitable for dry cleaning

MATTE LYCRA

01 Noir / 02 Blanc



15 Aqua



16 Royal



60 Poudré



03 Rose



07 Marine



19 Khaki



23 Lagon



08 Prunus



12 Parme



26 Bordeaux



28 Vert Emeraude



13 Orchidée



14 Acero



29 Azalée



44 Indaco

MATTE LYCRA COMPOSITION 80% Polyamide · 20% Elastane

WASH AND CARE

Due to the delicate nature of certain materials, kindly wear the dancewear garments with great care. Keeping your Ballet Rosa products in good shape depends solely on you. Each material has different quality standards. We suggest you respect the wash care labels and the care instructions stated below. The brand will not be liable for any damages caused by excessive or inappropriate usage.

Attention: intense sweating combined with the high temperature of the body over long periods. Color references are merely informative. Colors may vary slightly depending on material and dyeing batch.

WASH INSTRUCTIONS



May be machine washed at 40 °C
Do not iron
Use mild detergent. Do not bleach.
Do not tumble dry
Allow to dry flat
Suitable for dry cleaning

WARM-UP

01 Noir / 02 Blanc



03 Rose



07 Marine



26 Bordeaux



42 Gris Melange

WARM-UP COMPOSITION 100% Polyester

WASH AND CARE

Due to the delicate nature of certain materials, kindly wear the dancewear garments with great care. Keeping your Ballet Rosa products in good shape depends solely on you. Each material has different quality standards. We suggest you respect the wash care labels and the care instructions stated below. The brand will not be liable for any damages caused by excessive or inappropriate usage.

Attention: intense sweating combined with the high temperature of the body over long periods. Color references are merely informative. Colors may vary slightly depending on material and dying batch.

WASH INSTRUCTIONS



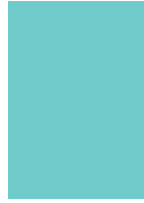
May be machine washed at 30°C
Do not iron
Use mild detergent. Do not bleach.
Do not tumble dry
Allow to dry flat
Suitable for dry cleaning

STRETCH MESH

01 Noir / 02 Blanc



13 Orchidée



15 Aqua



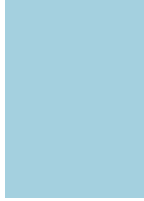
30 Chair



47 Gris



03 Rose



04 Ciel



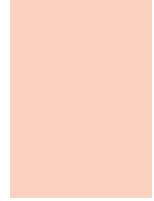
16 Royal



17 Rojo



59 Otter



60 Poudré



06 Jaune Paille



07 Marine



23 Lagon



26 Bordeaux



72 Café au Lait



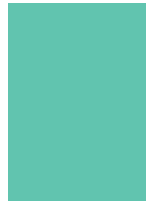
77 Encre Bleu



08 Prunus



12 Parme



28 Vert Emeraude



29 Azalée

STRETCH MESH COMPOSITION 94% Polyamide · 6% Elastane

WASH AND CARE

Due to the delicate nature of certain materials, kindly wear the dancewear garments with great care. Keeping your Ballet Rosa products in good shape depends solely on you. Each material has different quality standards. We suggest you respect the wash care labels and the care instructions stated below. The brand will not be liable for any damages caused by excessive or inappropriate usage.

Attention: intense sweating combined with the high temperature of the body over long periods. Color references are merely informative. Colors may vary slightly depending on material and dying batch.

WASH INSTRUCTIONS



Wash by hand only
Do not iron
Use mild detergent. Do not bleach.
Do not tumble dry
Allow to dry flat
Suitable for dry cleaning

CHIFFON – MOUSSELINE

01 Noir / 02 Blanc



82 Ruby



83 Snorkel Blue



03 Rose



07 Marine



86 Iris



90 Rose Ballet



12 Parme



38 Turquoise



57 Cyclamen



81 True Lavender

CHIFFON – MOUSSELINE COMPOSITION 100% Polyester

WASH AND CARE

Due to the delicate nature of certain materials, kindly wear the dancewear garments with great care. Keeping your Ballet Rosa products in good shape depends solely on you. Each material has different quality standards. We suggest you respect the wash care labels and the care instructions stated below. The brand will not be liable for any damages caused by excessive or inappropriate usage.

Attention: intense sweating combined with the high temperature of the body over long periods. Color references are merely informative. Colors may vary slightly depending on material and dyeing batch.

WASH INSTRUCTIONS



Wash by hand only
Do not iron
Use mild detergent. Do not bleach.
Do not tumble dry
Allow to dry flat
Suitable for dry cleaning

Headquarters

Rua da Peça, 1 · Ronfe
4805-427 Guimarães
Portugal

Customer Service

(Europe and Asia)
Phone +351 253 519 143
info@balletrosa.com

Ballet Rosa USA

2114 Central Street
Evanston, IL 60201
United States of America

Customer Service

(US and Canada)
Phone +1 (312) 439-6733
usa@balletrosa.com



BALLETROSA.COM