

# GRISHKO® ACADEMY

DANCEWEAR FOR STUDENTS OF BALLET ACADEMIES AND SCHOOLS



**Grishko®**



The best teachers know that the key of future success is always in details. This has become the main reason for collaboration of GRISHKO® with the worldwide famous ballet schools – The Bolshoi Ballet Academy, Vaganova Academy of Russian Ballet, Boris Eifman Dance Academy.

The secret of GRISHKO® uniform popularity is in its refined form. It's the carefully verified line of the back that allows the teacher to control the correct work of shoulders and neck, the form of hip cut that makes the movement easy, staying on the same place even during the most intensive exercises, and unexceptionable quality of fabrics.

Minimalism and hi-tech solutions – is what we stand on to guarantee the comfort, saving the elegant form, sophisticated and moderate silhouettes, breathable and handy materials, perfectly précised details.

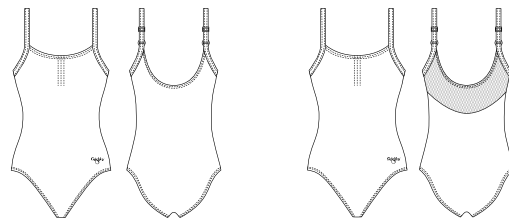
Ballet school is not only the famous names of its teachers and signature move of the graduates, but the branding that puts together all the details. Create the image of your school both in class and during away events as the best ballet academies and theatres do – choose the suitable form and color, and GRISHKO® team will take care of the quality.

# 5 EASY STEPS TO CREATE YOUR ACADEMY STYLE

## 1. CHOOSE SILHOUETTE

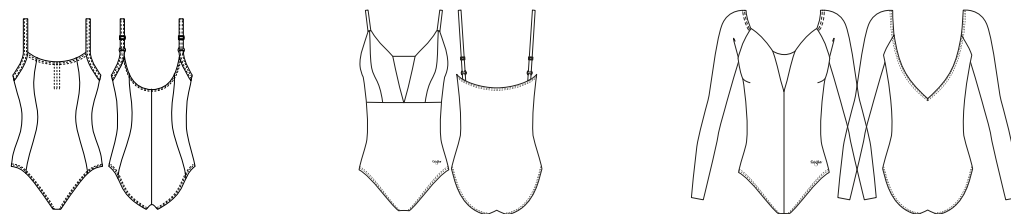
Elegant camisole styles with mesh or without — endless classic, beloved by dancers.

CLASSIC MODELS



Underline the silhouette — make the girls look taller and waist thinner.

NEW MODELS



## 2. SELECT COLOR: JUNIOR, MIDDLE, HIGH

Choose among variety of colors to fulfil the style of the school. You can have one color for everyone, or divide them depending on the age.

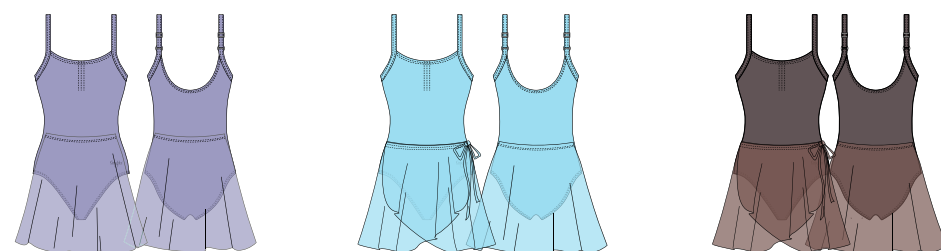
JUNIOR SCHOOL

MIDDLE SCHOOL

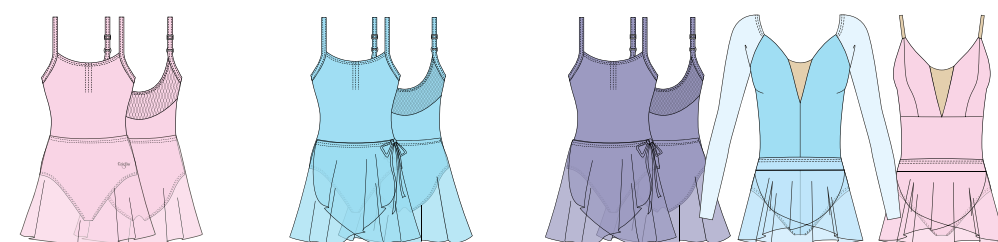
SENIOR SCHOOL



VAGANOVA BALLET ACADEMY CHOICE



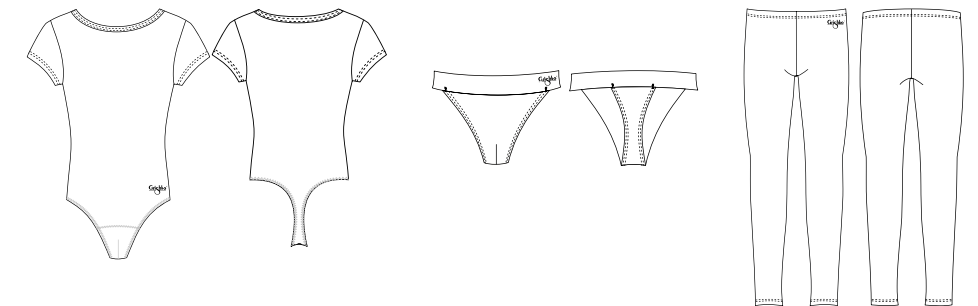
BOLSHOI BALLET ACADEMY CHOICE



## 3. CHOOSE BOY'S CLOTHING

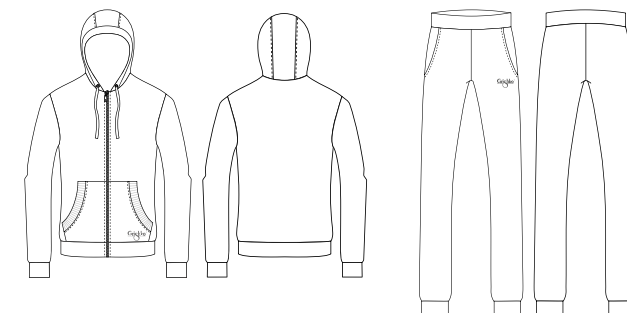
As a rule, boys use shorts in junior class, while middle and senior classes prefer leggings with bandage. These items are created to meet the highest standards of professional dancers, and made of the highest quality fabrics to be comfortable and durable.

MIDDLE AND SENIOR SCHOOL



## 4. COMPLETE THE ORDER WITH WARM-UP SUIT

Complete the look with suit for the time between the classes or during the warm-up. It's also a good uniform for the outside events — contests, tours or workshops.



\* You can order original Vaganova or BBA uniform marked with the Academy logo, written in Russian or English.

## 5. PERSONALIZE WITH LOGO OF THE ACADEMY

Add the logo of the school to underline the status and divide your students from all other schools. Choose the place and size of the logo.



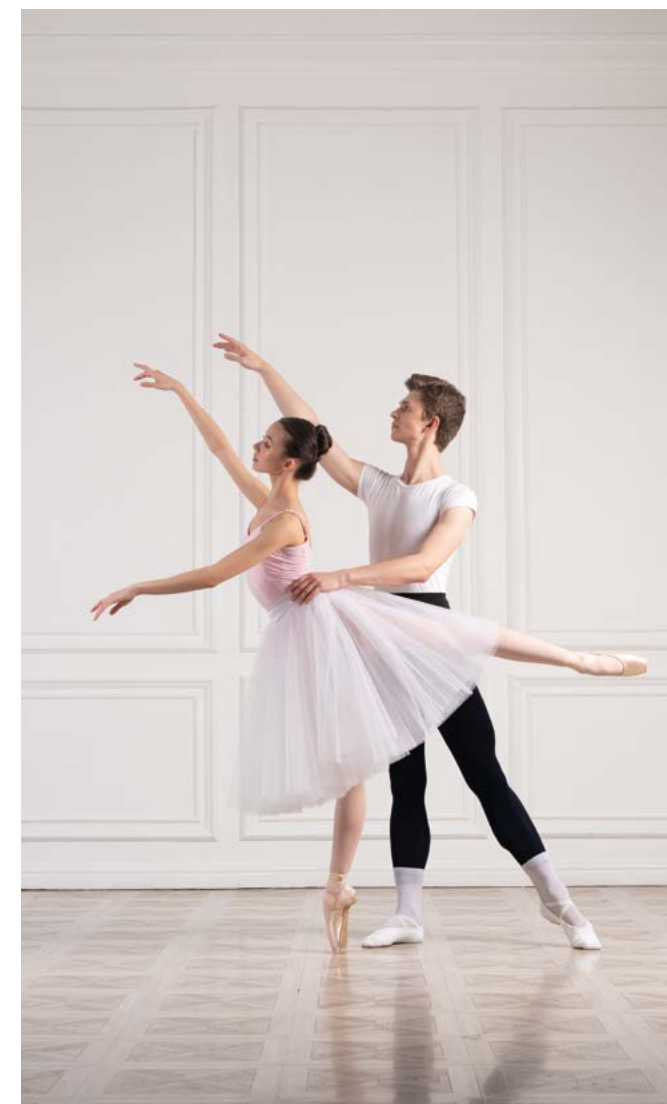




## BOLSHOI BALLET ACADEMY

We hold in honour the centuries-old traditions of the ballet artists education. One of these traditions is a uniform for classic dance. This uniform disciplines as well as makes students feel themselves as a part of the entire — alma mater Moscow ballet school. Working with GRISHKO® we received really comfortable, beautiful and professionally made apparel for ballet classes.

Rector of The Bolshoi Ballet Academy,  
people's artist of Russia, laureate of prize  
of the Government of the Russian Federation,  
art history PhD, professor  
**MARINA LEONOVA**







VAGANOVA  
BALLET  
ACADEMY

Wearing compulsory academy uniform makes students accustomed to obey the rules. The school discipline is the most important thing for beginners at initial ballet training. Uniform requirements always existed at the Vaganova Academy of Russian Ballet. My goal is to bring back the tradition. In that way everyone should have equal opportunities for training enabling a person to get closer to perfection.

Rector of the Vaganova Ballet Academy,  
people's artist of Russia, laureate of state prizes

NIKOLAY TSISKARIDZE



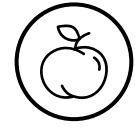


# FABRIC FEATURES OF GRISHKO LEOTARDS

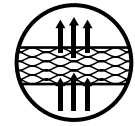
We carefully control the production to make the garment soft to touch like the second skin — because when your body feels comfort, you can concentrate on the main — dance.



The best existing high-tech and soft fabric for the sportswear that guarantees the comfort during any movements.



Super soft like a peach inside makes you feel the garment like the second skin.



Polyamide micro — hi-tech breathable fabric.



Easily absorbs the moisture and looks good even when it's a bit wet.



Fast-dries and doesn't need ironing.



Has UPF 50+ that allows to wear the garment during outdoor classes.



Special bi-stretch technology helps you to feel free during stretching and active exercises.



Keeps the form and doesn't lose it after the numbers of washing cycles.



Colors stay bright even after the numbers of washing cycles.



# CAREFUL PRODUCTION FOR YOUR CONFIDENCE



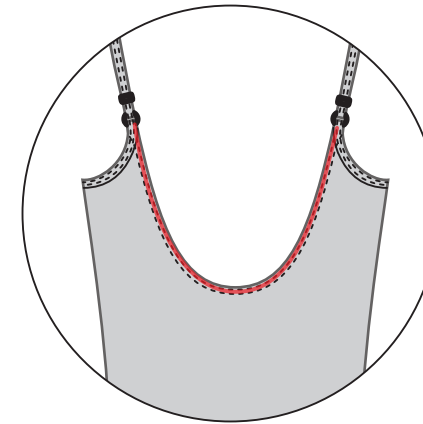
We use three different types of thread to answer stretching properties of the materials.



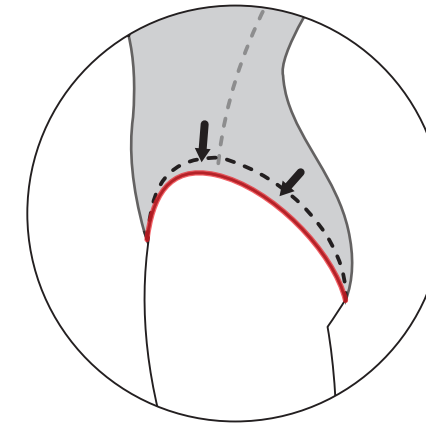
We pay attention to the end of each seam by bunching it. This guarantees longer lifespan of your garment.

# UNIQUE CONSTRUCTION

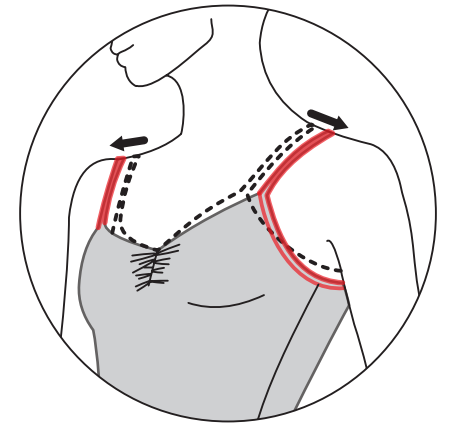
Perfect basic leotard is a combination of construction refined through the years, high-quality fabric and impeccable manufacturing.



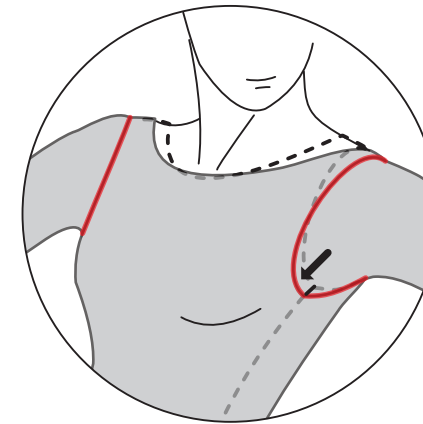
Deep back cut shows the shoulder bone.



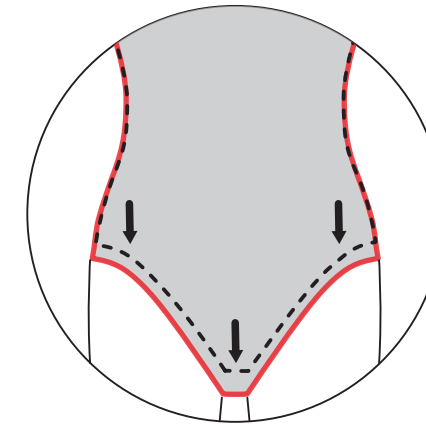
The leg-cut is changed to make the hip more hidden.



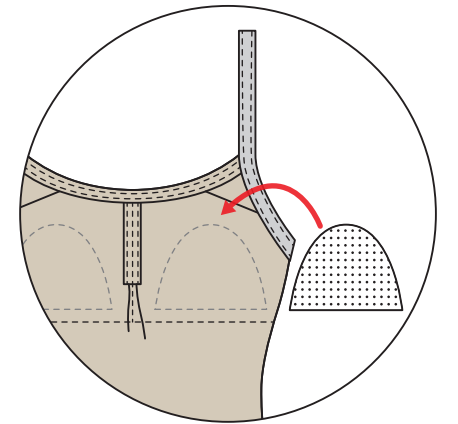
The straps are moved from the front to the shoulders to make them look less evident.



For the comfort of arm movements the armhole is done lower.



Adjusted body length according to statistic data, which shows, that people are getting taller.



The lining is made with "pocket", so you can easily add inserts (depends on the model). The formed cups are ordered separately.

# NUDE LINING

We use nude lining in our leotards, that gives girls the confidence that nothing is visible under the garment.





## LEOTARD WITH STRAPS

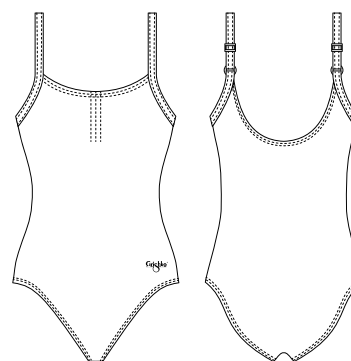
### DAD 1491M

Size: 28–38  
Without lining

### DAD 1491MP

Size: 28–36  
With lining  
Size: 38  
With lining  
and pockets for cups

80% polyamide micro,  
20% elastane

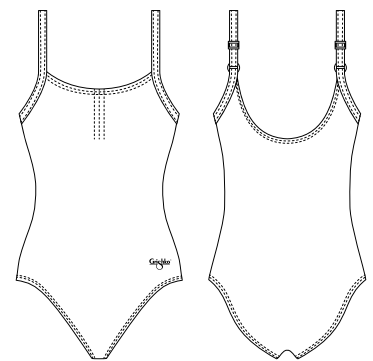


## LEOTARD WITH STRAPS

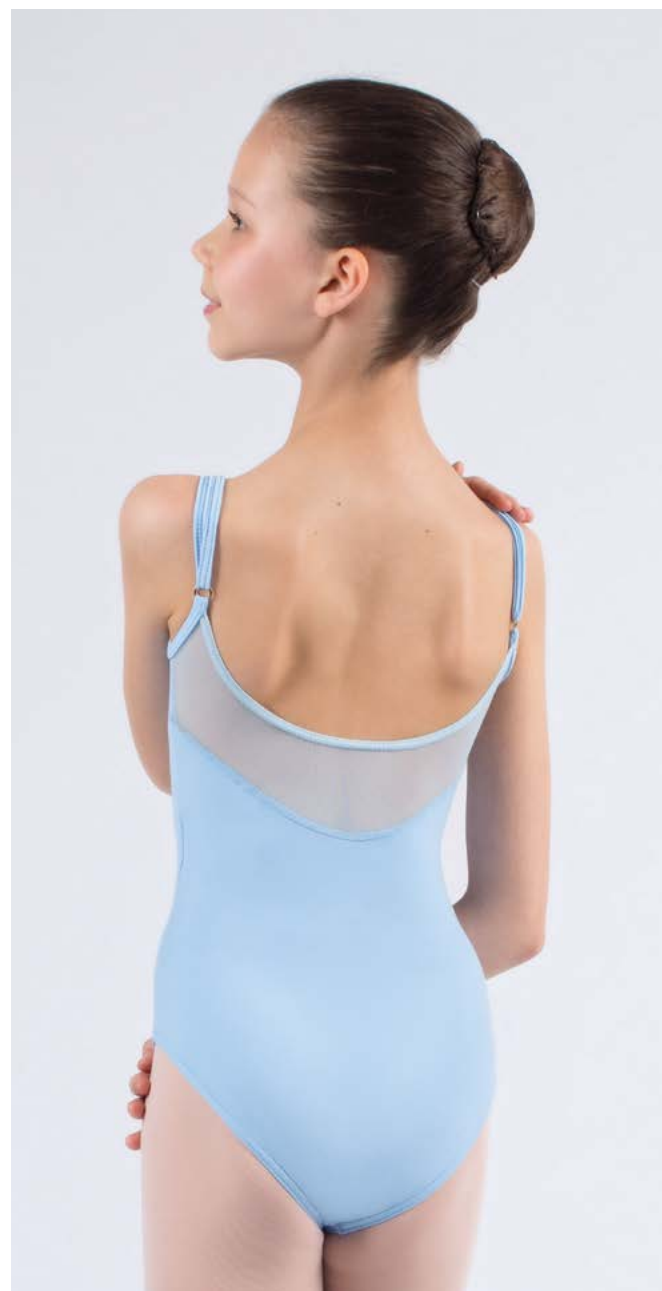
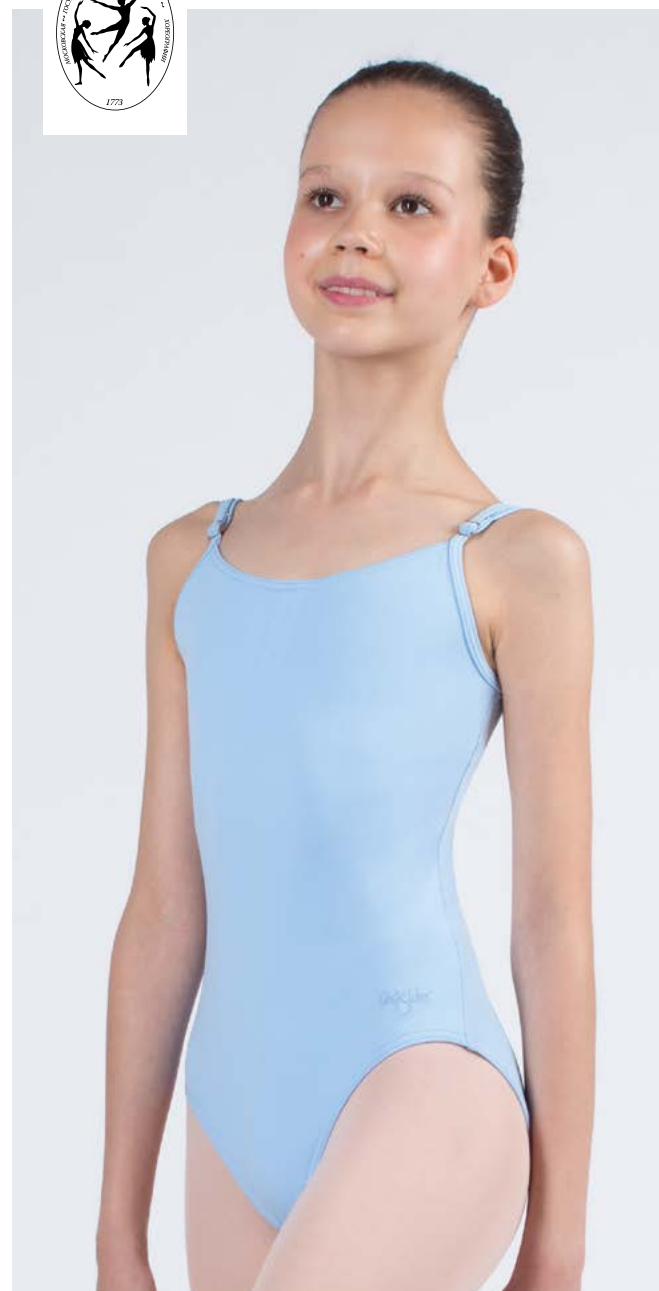
### DA 1491MP

Size: 40–50  
With lining  
and pockets for cups

80% polyamide micro,  
20% elastane







## LEOTARD WITH STRAPS AND MESH

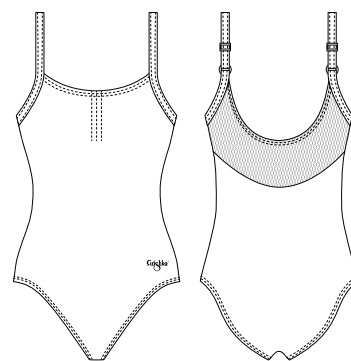
**DAD 1491/1M**

Size: 28–38  
Without lining

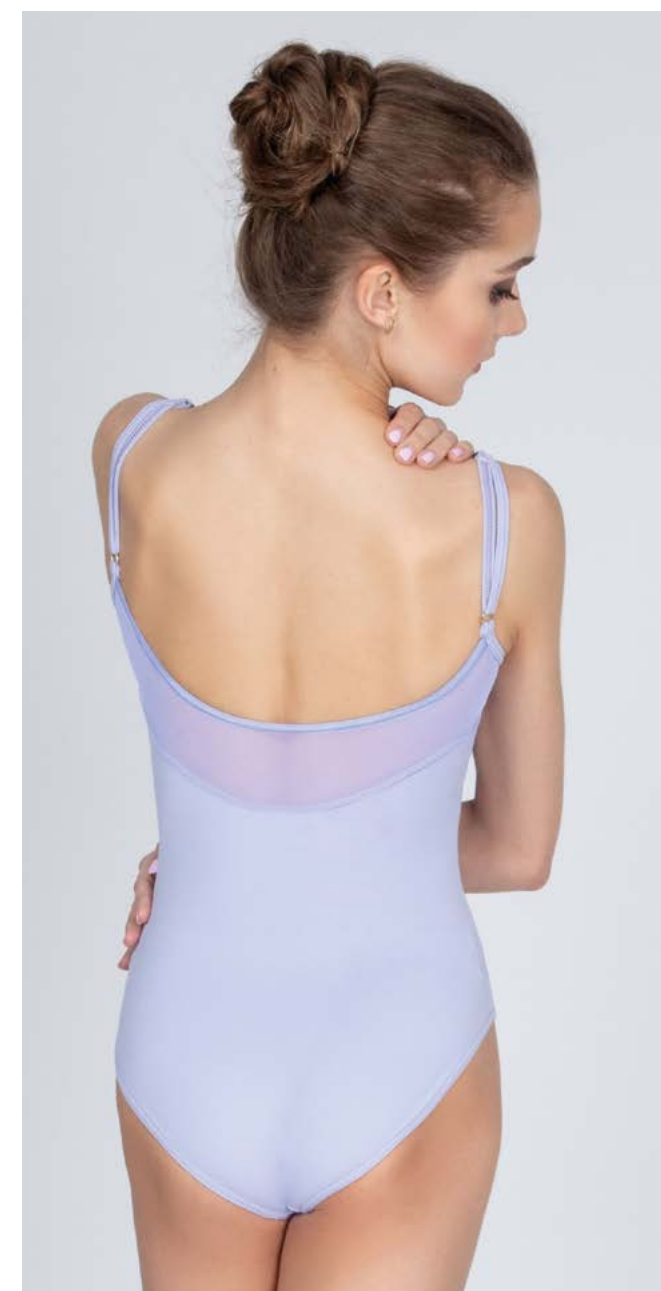
**DAD 1491/1MP**

Size: 28–36  
With lining  
Size: 38  
With lining  
and pockets for cups

- BEST SELLER** Ice Blue
- BEST SELLER** Lilac
- BEST SELLER** Coffee White
- BEST SELLER** Blue Pink
- BEST SELLER** Black Red



80% polyamide micro,  
20% elastane

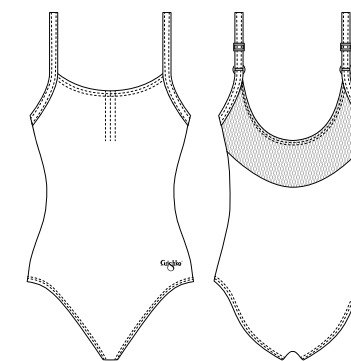


## LEOTARD WITH STRAPS AND MESH

**DA 1491/1MP**

Size: 40–50  
With lining  
and pockets for cups

- BEST SELLER** Ice Blue
- BEST SELLER** Lilac
- BEST SELLER** Coffee White
- BEST SELLER** Blue Pink
- BEST SELLER** Black Red



80% polyamide micro,  
20% elastane





The success is reached through long and hard work, and knowing it we did all our best to make this way for the young dancers easier. Now we're proud with the result — a child, fully dressed in GRISHKO® feels confident both in class and on the stage. Every ballet school and ballet academy has its own style and branding. Some prefer one color and different styles depending on the age, while the other can have different colors, having the same form for different classes.

We consulted with the famous teachers and dancers from Vaganova Ballet Academy, The Bolshoi Ballet Academy, St. Petersburg Eifman Ballet and Dance Academy to create the garments that are comfortable and beautiful at the same time. Now they are loved in the best ballet schools all over the world — let your students be impeccable in GRISHKO® uniform!

President and founder of  
GRISHKO® group of companies  
**NIKOLAY GRISHKO**



## LEOTARD WITH STRAPS

### DAD 1001M

Size: 28–38

Without lining

### DAD 1001MP

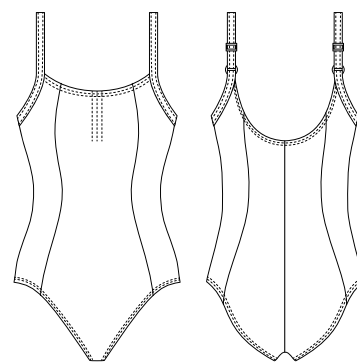
Size: 28–36

With lining

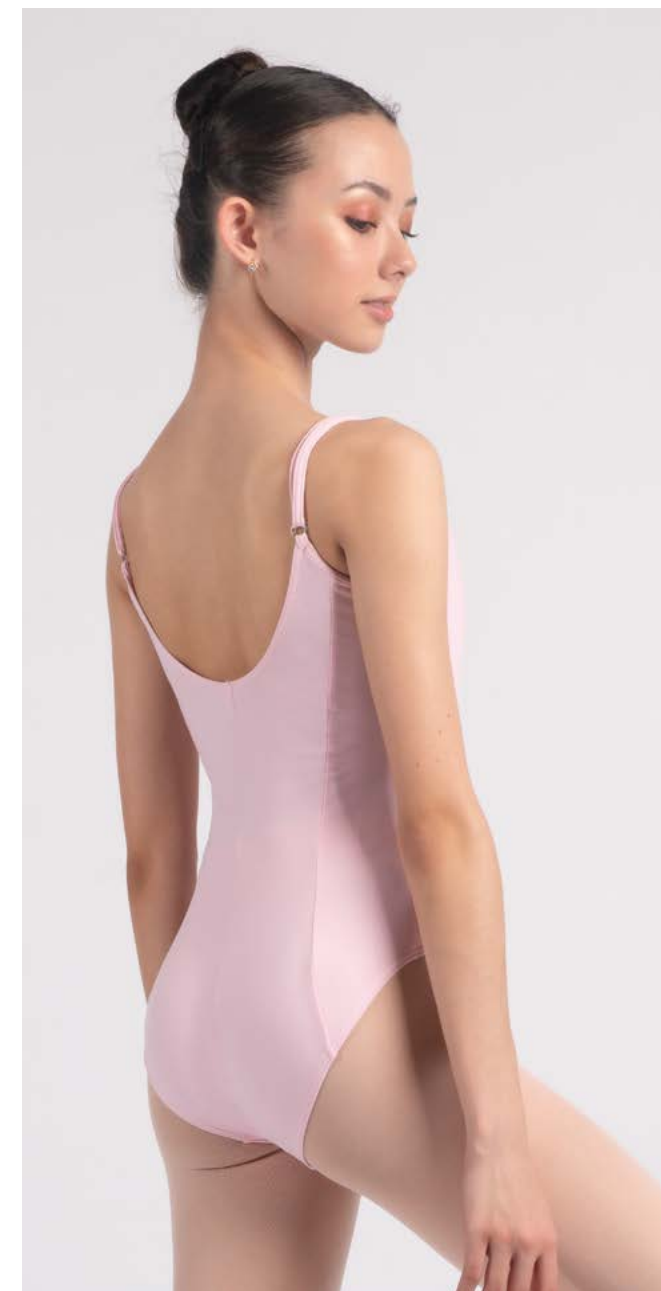
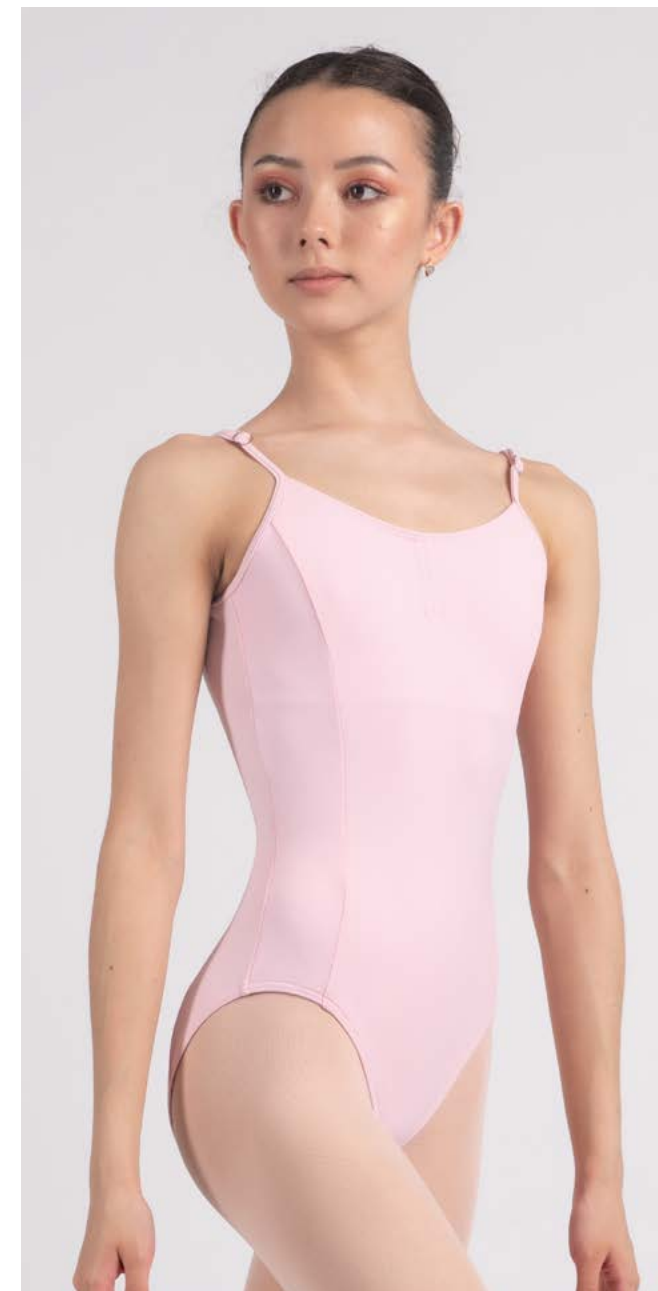
Size: 38

With lining  
and pockets for cups

80% polyamide micro,  
20% elastane



Basic leotard with adjust-  
able straps and additional  
seams that make the figure  
look even more thin and  
graceful.



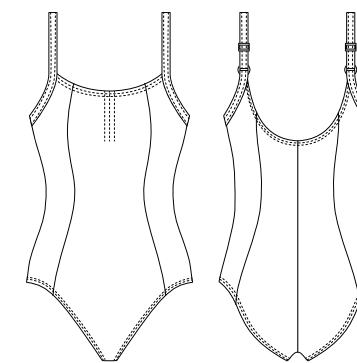
## LEOTARD WITH STRAPS

### DA 1001MP

Size: 40–50

With lining  
and pockets for cups

80% polyamide micro,  
20% elastane



Basic leotard with adjust-  
able straps and additional  
seams that make the figure  
look even more thin and  
graceful.





NEW



## LEOTARD WITH STRAPS

### DAD 1930M

Size: 36–38  
Without lining

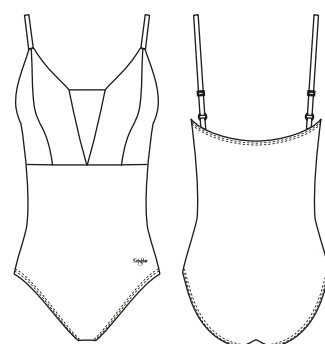
### DAD 1930MP

Size: 36–38  
With lining

### DA 1930MP

Size: 40–50  
With lining

- |  |  |
|--|--|
|  White    |  Blue         |
|  Pink     |  Medium Taupe |
|  Ice Blue |  Dark Blue    |
|  Lilac    |  Red          |
|  Coffee   |  Black        |



Style preferable for elder classes and performances — the straps made of nude elastic and the front detail create a slim and airy silhouette.

80% polyamide micro,  
20% elastane



NEW



NEW



## LEOTARD WITH LONG SLEEVE

**DAD 1931M**

Size: 36–38

Without lining

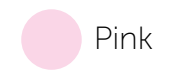
**DA 1931M**

Size: 40–50

Without lining



White



Pink



Ice Blue



Lilac



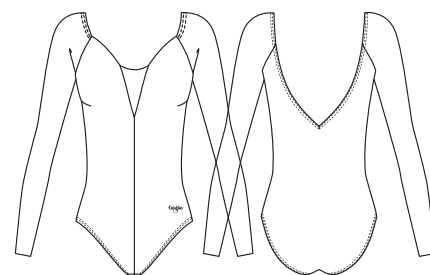
Blue

Medium  
Taupe

Red



Black

80% polyamide micro,  
20% elastane

Created in 2019 for qualification exams at the Bolshoi Ballet Academy, this model drew a response. Now you can have the leotard, loved both by teachers and graduates of one of the best ballet schools in the world!



NEW





BEST  
SELLER



## MESH SKIRT WITH TIES

**06017/1**

Size: XS — 30 cm  
S — 32 cm  
M — 40 cm  
L — 48 cm  
XL — 55 cm

93% polyamide, 7% elastane

○ White

● Pink

BEST SELLER ● Ice Blue

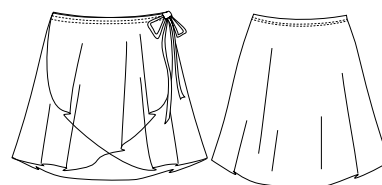
BEST SELLER ● Lilac

BEST SELLER ● Coffee

● Blue

● Red

BEST SELLER ● Black



Comfortable wrap skirt with ties, which can be fixed at any waist size. Has two lengths — 32 cm for kids (size S) and 40 cm (size M) for teenagers and adults.





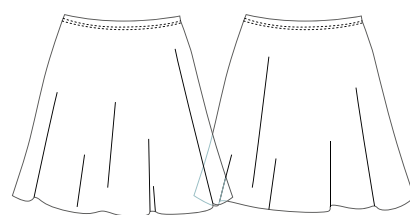
## MESH SKIRT

**DAD 1492**  
Size: 26–32  
26.5 cm

Size: 34–38  
30 cm

93% polyamide, 7% elastane

- ☐ White
- ☐ Pink
- BEST SELLER ☐ Ice Blue
- BEST SELLER ☐ Lilac
- BEST SELLER ☐ Coffee
- ☐ Blue
- ☐ Red
- BEST SELLER ☐ Black



Mesh skirt, perfect for kids with comfortable elastic belt — even the smallest ones will not have any troubles with getting dressed fast!







NEW



## MESH SKIRT

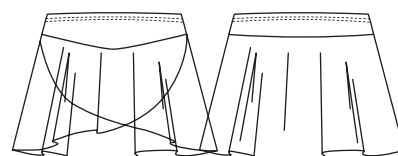
### DAD 1945

Size: 36–38  
33 cm

### DA 1945

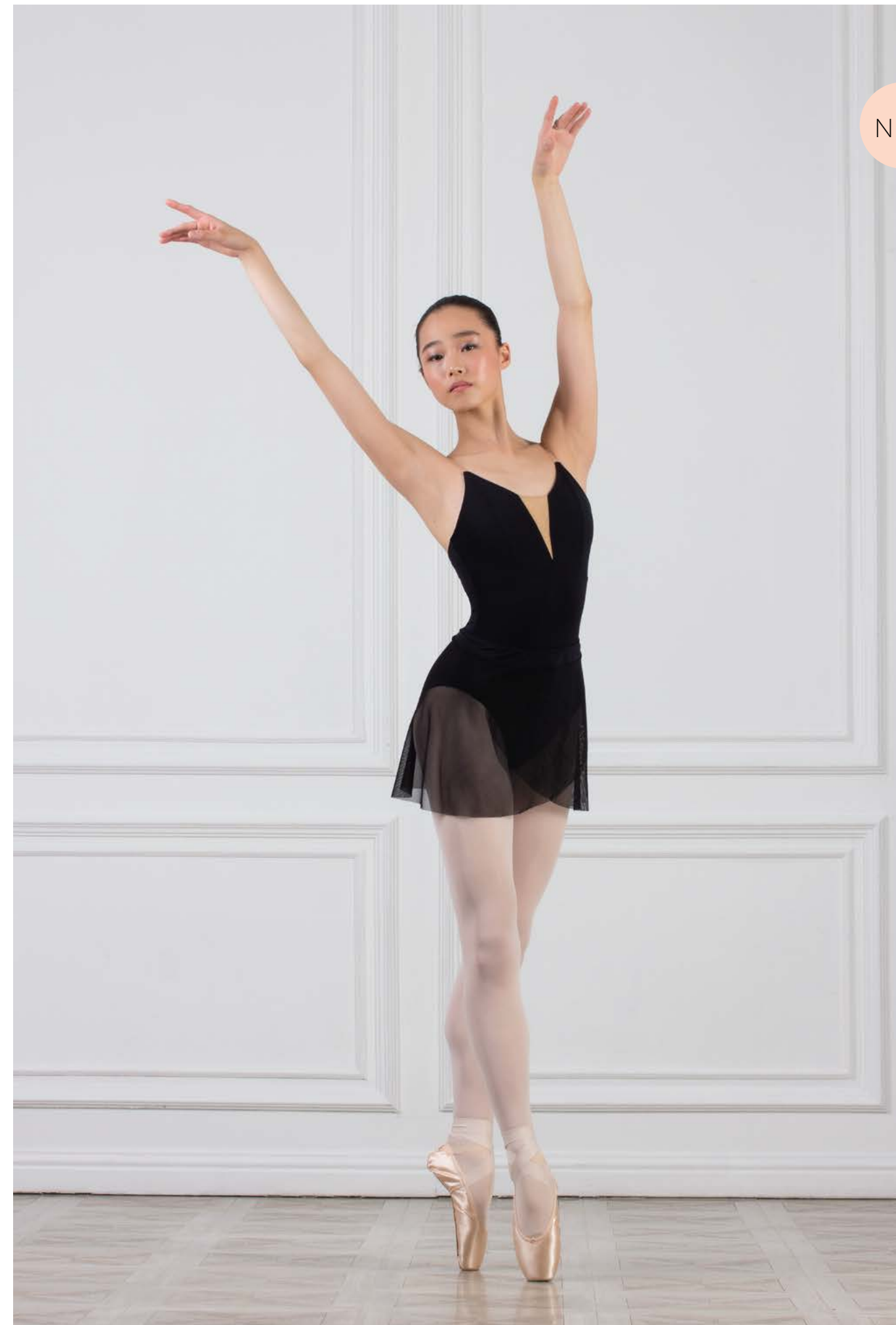
Size: 40–50  
33 cm

Belt: 80% polyamide micro, 20% elastane  
Skirt: 93% polyamide, 7% elastane



- Pink
- Coffee
- Medium Taupe
- Black

Short mesh skirt with wide elastic belt to underline the waist — have the similar form to the bestseller 06017/1, but with straight line of the back.



NEW

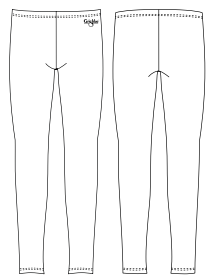


## LEGGINGS

**DAD 1497M**

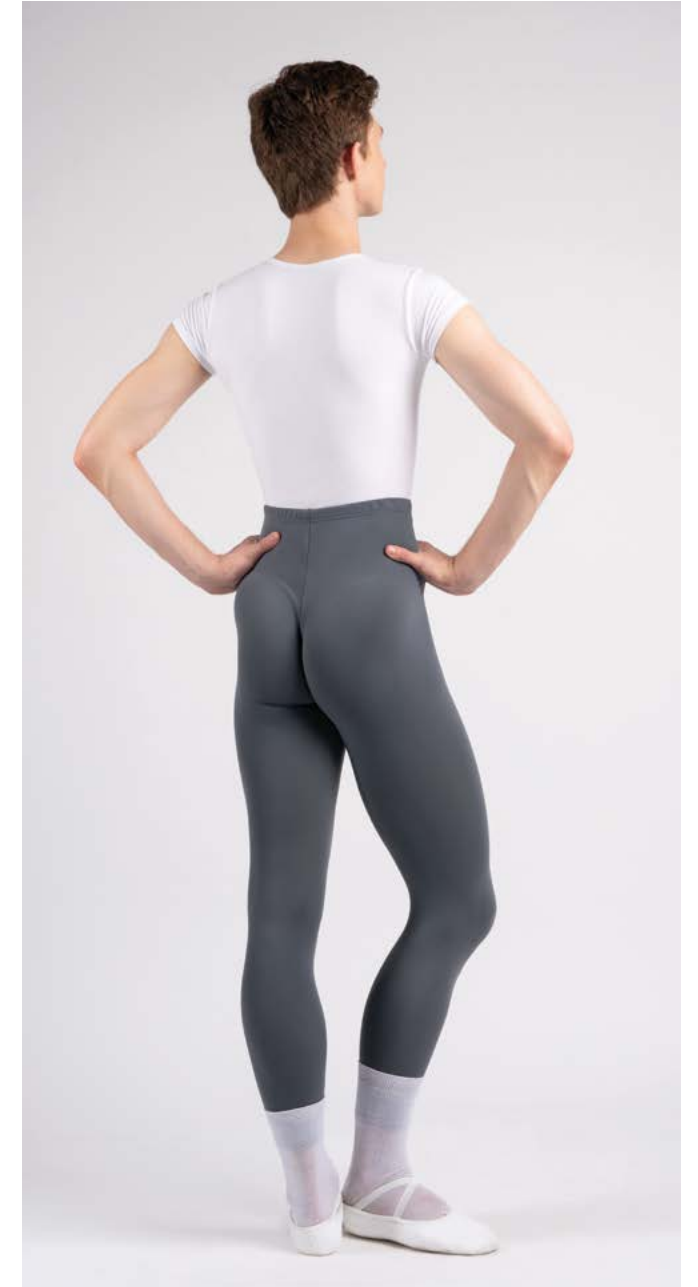
Size: 30–38

80% polyamide micro, 20% elastane



- Dark Grey
- Dark Blue
- Black

↑ Basic height can be changed by order for taller or shorter dancers. ↓

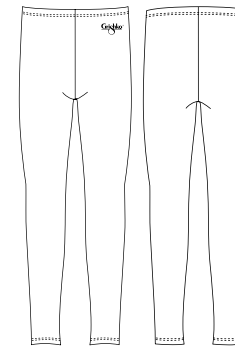


## LEGGINGS

**DA 1497M**

Size: 40–52

80% polyamide micro, 20% elastane



- Dark Grey
- Dark Blue
- Black

↑ Basic height can be changed by order for taller or shorter dancers. ↓



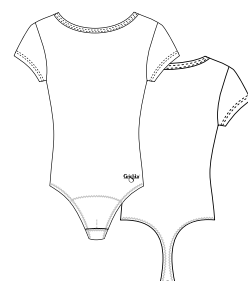


## BODYSUIT

**DAD 1480C**  
Size: 36–38

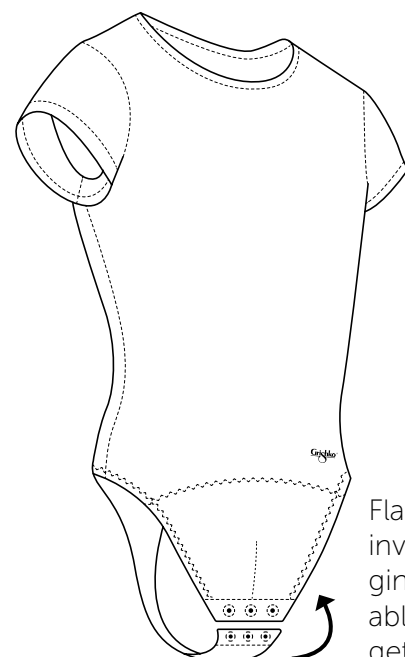
90% cotton,  
10% elastane

Bodysuit made of stretchy cotton with flat seams is very comfortable and looks very tidy.



Basic height can be changed by order for taller or shorter dancers.

○ White



Flat snap fasteners – invisible under leggings and comfortable while moving or getting dressed.



## BODYSUIT

**DA 1480C**  
Size: 40–52

90% cotton,  
10% elastane

Bodysuit made of stretchy cotton with flat seams is very comfortable and looks very tidy.



Basic height can be changed by order for taller or shorter dancers.

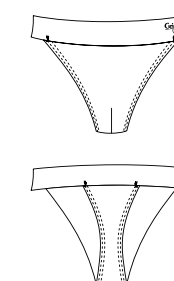
○ White

## MEN'S SUPPORT BELT

**DA 1496C**  
Size: 40–52

90% cotton,  
10% elastane

Bandage or classic men's belt is made of soft cotton and has additional soft protection detail inside. The form is created for comfort during dance.



● Pale Beige



The uniform is important not only for the academies — ballet companies, dance and sport teams will look and feel like the whole if they are dressed alike. It's easier to create synergy wearing the same suits and using the same accessories. Good uniform becomes the object of dream for followers and fans — and that increases your brand recognition.

If you are the representative of a ballet company or school, you can always ask GRISHKO® managers about exclusive form or color to underline your unique style. The items presented in this look book is what we've already done and recommend, but there's a great field to create something new: suits, t-shirts, leotards and unitards, skirts, leggings... whatever your team needs!

We guarantee to use best materials and refined form to allow the dancers, teachers and sportsmen to feel comfortable and confident — at home or travelling around the world.





## GIRLS HOODIE

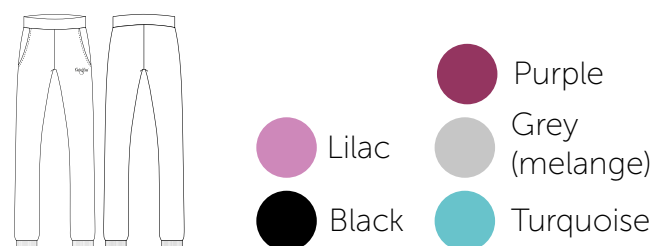
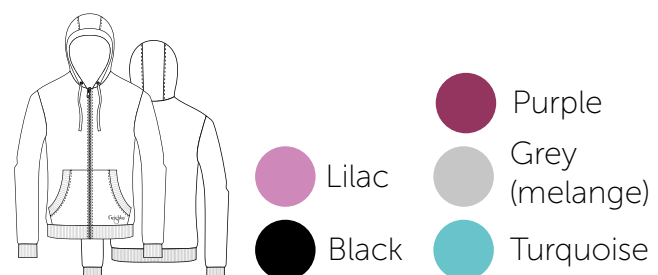
**DAD 1481**

Size: 28–38

95% cotton, 5% elastane

Ask your manager for help to choose between the variety of colors and different types of fabric.

Basic height can be changed by order for taller or shorter dancers.



## GIRLS PANTS

**DAD 1482**

Size: 28–38

95% cotton, 5% elastane

Ask your manager for help to choose between the variety of colors and different types of fabric.

Basic height can be changed by order for taller or shorter dancers.



## GIRLS HOODIE

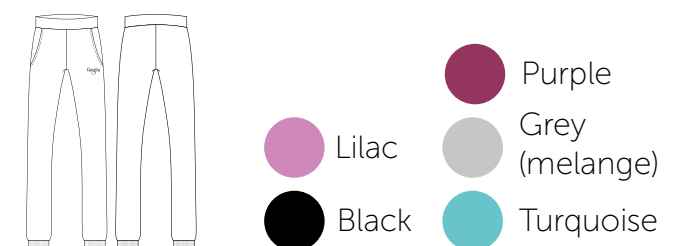
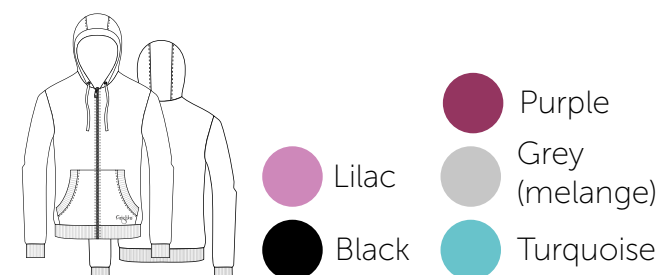
**DA 1481**

Size: 40–50

95% cotton, 5% elastane

Ask your manager for help to choose between the variety of colors and different types of fabric.

Basic height can be changed by order for taller or shorter dancers.





## BOYS HOODIE

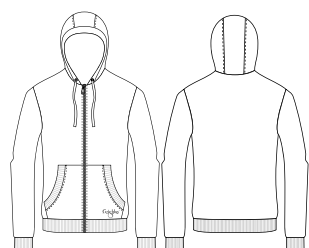
**DAD 1483**

Size: 28–38

95% cotton, 5% elastane

Ask your manager for help to choose between the variety of colors and different types of fabric.

↑ Basic height can be changed by order for taller or shorter dancers.



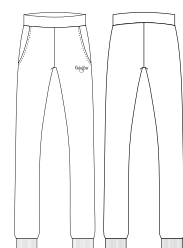
- Dark Grey
- Dark Blue
- Black

## BOYS PANTS

**DAD 1484**

Size: 28–38

95% cotton, 5% elastane



- Dark Grey
- Dark Blue
- Black



## BOYS HOODIE

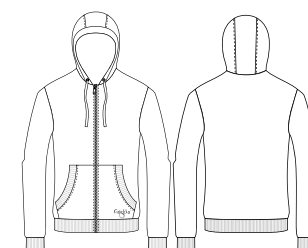
**DA 1483**

Size: 40–52

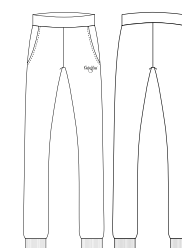
95% cotton, 5% elastane

Ask your manager for help to choose between the variety of colors and different types of fabric.

↑ Basic height can be changed by order for taller or shorter dancers.



- Dark Grey
- Dark Blue
- Black



- Dark Grey
- Dark Blue
- Black










## BAG GISELLE

**0230**

Size: 35 x 45 cm

100% polyester



-  Gold
-  Vintage Gold
-  Cosmic Blue
-  Moon Stone
-  Silver Star




## BAG GALAXY

**0231**

Size: 47 x 47 cm

100% polyester



-  Gold
-  Vintage Gold
-  Cosmic Blue
-  Moon Stone
-  Silver Star
-  Graphite









## BACKPACK SPACE

**0232**

Size: 40 x 50 cm

100% polyester

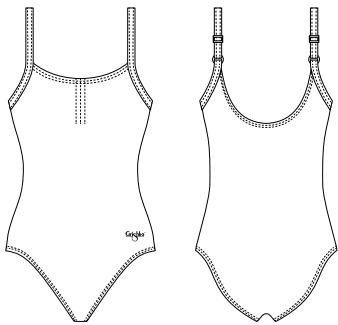


-  Gold
-  Vintage Gold
-  Cosmic Blue
-  Moon Stone
-  Silver Star
-  Graphite



Grishko Logo is a basic print, but we can add your branding on the bag to create unique bags for your school or ballet company.

GIRLS



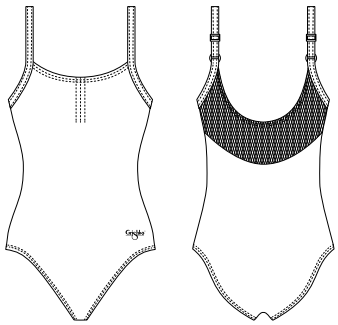
LEOTARD WITH STRAPS

**DAD 1491M**  
Size: 28–38  
Without lining  
**DAD 1491MP**  
Size: 28–36  
With lining  
Size: 38  
With lining and pockets for cups

**DA 1491MP**  
Size: 40–50  
With lining and pockets for cups

80% polyamide micro, 20% elastane

- White
- Pink
- Ice Blue
- Blue
- Lilac
- Dark Blue
- Coffee
- Red
- Black



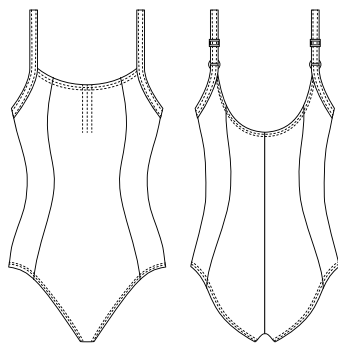
LEOTARD WITH STRAPS AND MESH

**DAD 1491/1M**  
Size: 28–38  
Without lining  
**DAD 1491/1MP**  
Size: 28–36  
With lining  
Size: 38  
With lining and pockets for cups

**DA 1491/1MP**  
Size: 40–50  
With lining and pockets for cups

80% polyamide micro, 20% elastane

- White
- Pink
- Ice Blue
- Blue
- Lilac
- Coffee
- Red
- Black



LEOTARD WITH STRAPS

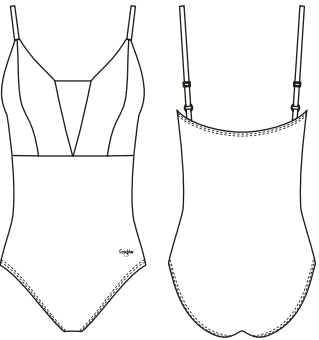
**DAD 1001M**  
Size: 28–38  
Without lining  
**DAD 1001MP**  
Size: 28–36  
With lining  
Size: 38  
With lining and pockets for cups

**DA 1001MP**  
Size: 40–50  
With lining and pockets for cups

80% polyamide micro, 20% elastane

- White
- Pink
- Ice Blue
- Blue
- Lilac
- Dark Blue
- Coffee
- Red
- Black

GIRLS



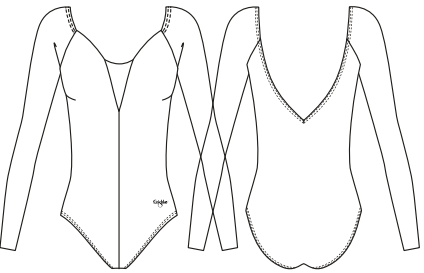
LEOTARD WITH STRAPS

**DAD 1930M**  
Size: 36–38  
Without lining  
**DAD 1930MP**  
Size: 36–38  
With lining

**DA 1930MP**  
Size: 40–50  
With lining

80% polyamide micro, 20% elastane

- White
- Pink
- Ice Blue
- Blue
- Lilac
- Dark Blue
- Coffee
- Medium Taupe
- Red
- Black



LEOTARD WITH LONG SLEEVE

**DAD 1931M**  
Size: 36–38  
Without lining

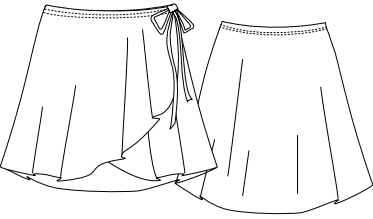
**DA 1931M**  
Size: 40–50  
Without lining

80% polyamide micro, 20% elastane

- White
- Pink
- Ice Blue
- Blue
- Lilac
- Medium Taupe
- Red
- Black



GIRLS

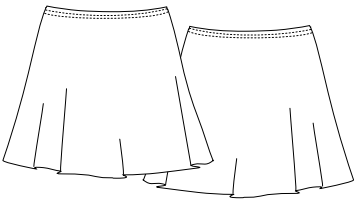


MESH SKIRT WITH TIES

**06017/1**  
Size: XS – 30 cm  
S – 32 cm  
M – 40 cm  
L – 48 cm  
XL – 55 cm

93% polyamide,  
7% elastane

- |  |          |  |        |
|--|----------|--|--------|
|  | White    |  | Lilac  |
|  | Pink     |  | Coffee |
|  | Ice Blue |  | Red    |
|  | Blue     |  | Black  |



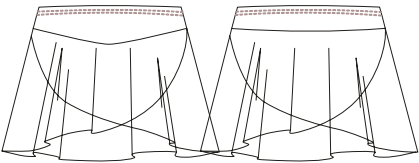
MESH SKIRT

**DAD 1492**  
Size: 26–32  
26.5 cm

Size: 34–38  
30 cm

93% polyamide,  
7% elastane

- |  |          |  |        |
|--|----------|--|--------|
|  | White    |  | Lilac  |
|  | Pink     |  | Coffee |
|  | Ice Blue |  | Red    |
|  | Blue     |  | Black  |



MESH SKIRT WITH TIES

**DAD 1945**  
Size: 36–38  
33 cm

**DA 1945**  
Size: 40–50  
33 cm

Belt:  
80% polyamide micro,  
20% elastane  
Skirt:  
93% polyamide,  
7% elastane

- |  |              |
|--|--------------|
|  | Pink         |
|  | Coffee       |
|  | Medium Taupe |
|  | Black        |

BOYS



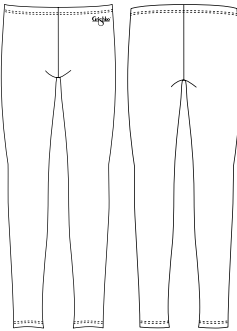
BODYSUIT

**DAD 1480C**  
Size: 36–38

**DA 1480C**  
Size: 40–52

90% cotton,  
10% elastane

- |  |       |
|--|-------|
|  | White |
|--|-------|



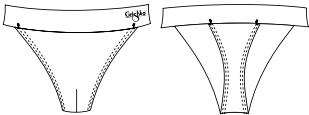
LEGGINGS

**DAD 1497M**  
Size: 36–38

**DA 1497M**  
Size: 40–52

80% polyamide micro,  
20% elastane

- |  |           |
|--|-----------|
|  | Dark Grey |
|  | Dark Blue |
|  | Black     |



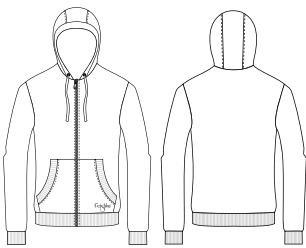
MEN'S SUPPORT BELT

**DA 1496C**  
Size: 40–52

90% cotton,  
10% elastane

- |  |            |
|--|------------|
|  | Pale Beige |
|--|------------|

WARM-UP SUIT



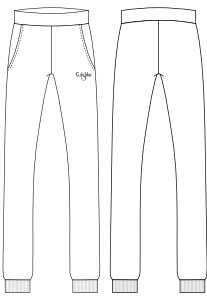
GIRLS HOODIE

**DAD 1481**  
Size: 28–38

**DA 1481**  
Size: 40–50

95% cotton, 5% elastane

- Grey (melange)
- Turquoise
- Lilac
- Purple
- Black



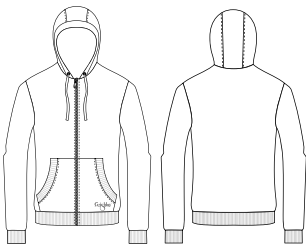
GIRLS PANTS

**DAD 1482**  
Size: 28–38

**DA 1482**  
Size: 40–50

95% cotton, 5% elastane

- Grey (melange)
- Turquoise
- Lilac
- Purple
- Black



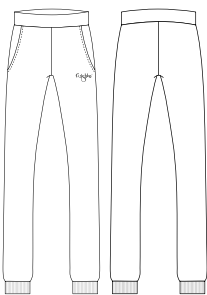
BOYS HOODIE

**DAD 1483**  
Size: 28–38

**DA 1483**  
Size: 40–52

95% cotton, 5% elastane

- Grey (melange)
- Dark Blue
- Black



BOYS PANTS

**DAD 1484**  
Size: 28–38

**DA 1484**  
Size: 40–52

95% cotton, 5% elastane

- Grey (melange)
- Dark Blue
- Black

BAGS



BAG GISELLE

**0230**  
Size: 35 x 45 cm

100% polyester

- Vintage Gold
- Gold
- Cosmic Blue
- Moon Stone
- Silver Star



BAG GALAXY

**0231**  
Size: 47 x 47 cm

100% polyester

- Vintage Gold
- Gold
- Cosmic Blue
- Moon Stone
- Silver Star
- Graphite



BACKPACK SPACE

**0232**  
Size: 40 x 50 cm

100% polyester

- Vintage Gold
- Gold
- Cosmic Blue
- Moon Stone
- Silver Star
- Graphite

COLOR CHART (POLYAMIDE MICRO)

1	White	18	Blue	28	Coffee	10	Red
9	Pink	30	Lilac	42	Medium Taupe	4	Black
12	Ice Blue	16	Dark Blue	31	Dark Grey		



GRISHKO® APPAREL SIZE CORRESPONDENCE CHART

All the measurements in chart are based on RU sizes, size range in articles are also in RU sizes.

GIRLS							
Height, cm	110	116–122	128	134	140	146	152
Height, inch	43"	45"–47"	47"-50"	50"-52,7"	52,7"-55"	55"-57,4"	57,4"-59,8"
Chest, cm	52	56	57–60	61–64	65–68	69–72	73-76
Chest, inch	20.4"	22"	22.4"–23.6"	24"–25.1"	25.6"–26.7"	27.1"–28.3"	28.7"–29.9"
Waist, cm	51	52	53–54	55–57	58–59	60	61
Waist, inch	20"	20.4"	20.8"–21.2"	21.6"–22.4"	22.8"–23.2"	23.6"	24"
Hip, cm	60	63	64–68	69–72	73–77	78–81	82-85
Hip, inch	23.6"	24.8"	24"–26.7"	27.1"–28.3"	28.7"–30.3"	30.7"–31.8"	32.2"–33.4"
Age (RU)	4–5 Y	5–6 Y	6–7 Y	8–9 Y	9–10 Y	10–11 Y	12–13 Y
Russia (RU)	26	28	30	32	34	36	38
Age (EU)	-	4 Y	6 Y	8 Y	10 Y	11 Y	12 Y
Europe (EU)	110–116	116–122	122–128	128–134	134–140	140–146	146–152
United States (USA)	4-5	6-7	7-8	8-9	9-10	10-11	12-13
United Kingdom (UK)	5–6	6–7	7–8	8–9	9–10	10–11	11–12
Japan (JP)	110	120	120	130	140	150	160
China (CH)	115	125	125	135	145	155	165

BOYS							
Height, cm	110	116–122	128	134	140	146	152
Height, inch	43.5"	45.5"–48"	50.5"	53"	55"	57.5"	60"
Chest, cm	52	56	57–60	61–64	65–68	69–72	73-76
Chest, inch	20.4"	22"	22.4"–23.6"	24"–25.1"	25.6"–26.7"	27.1"–28.3"	27.8"–30"
Waist, cm	51	52	53–54	55–57	58–60	61–63	64–65
Waist, inch	20"	20.4"	20.8"–21.2"	21.6"–22.4"	22.8"–23.6"	24"–24.8"	25.1"–25.5"
Hip, cm	60	61	62–65	66–69	70–73	74–77	78-85
Hip, inch	23.6"	24.8"	24.4"–25.5"	25.9"–27.1"	27.5"–28.7"	29.1"–30.3"	30.7"–33.4"
Age (RU)	3–4 Y	4–5 Y	6–7 Y	8–9 Y	9–10 Y	10–11 Y	12–13 Y
Russia (RU)	26	28	30	32	34	36	38
Age (EU)	-	4 Y	6 Y	8 Y	10 Y	11 Y	12 Y
Europe (EU)	110–116	116–122	122–128	128–134	134–140	140–146	146–152

GRISHKO® APPAREL SIZE CORRESPONDENCE CHART

All the measurements in chart are based on RU sizes, size range in articles are also in RU sizes.

LADIES							
Height, cm	158	164	168–170	168–172	168–172	168–172	168-172
Height, inch	5'2"	5'4"	5'6"–5'7"	5'6"–5'7"	5'6"–5'7"	5'6"–5'7"	5'6"–5'7"
Chest, cm	77–80	81–84	85–88	89–92	93–96	97–100	101-104
Chest, inch	30"–31.5"	32"–33"	33.5"–34.5"	35"–36"	36.6"–37.7"	38"–39.3"	41.3"–42.5"
Waist, cm	61–62	63–64	65–68	69–71	72–74	75–77	78-81
Waist, inch	24"–24.5"	24.5"–25"	25.5"–26.7"	27"–28"	28.3"–29"	30"–31.4"	30"–31.8"
Hip, cm	86–89	90–92	93–96	97–100	101–104	105–108	109-112
Hip, inch	34"–35"	35.4"–36"	36.6"–37.7"	38"–39"	39.7"–41"	41.3"–42.5"	42.9"–44"
International	XXS / P	XS	S	M	L	XL	XXL
Russia (RU)	40	42	44	46	48	50	52
Europe (EU)	34	36	38	40	42	44	46
Italy (IT)	38	40	42	44	46	48	50
France (FR)	36	38	40	42	44	46	48
Germany (DE)	32/34	36	38	40	42	44	46
United States (USA)	4	6	8	10	12	14	16
United Kingdom (UK)	8	10	12	14	16	18	20
Japan (JP)	7	9	11	13	15	17	19
China (CH)	155/80A	160/84A	165/88A	170/92A	175/96A	180/100A	185/104A

MEN							
Height, cm	164–170		170–176		176–182		182–188
Height, inch	5'4"–5'7"		5'7"–5'9"		5'9"–6'0"		6'0"–7'4"
Chest, cm	77–80	81–84	85–88	89–92	93–96	97–100	101–104 105–108
Chest, inch	30"–31.5"	32"–33"	33.5"–34.5"	35"–36"	36.6"–37.7"	38"–39.3"	40"–41" 41.3"–42.5"
Waist, cm	65–66	67–68	69–70	71–74	75–78	79–82	83–86 87–90
Waist, inch	25.5"–26"	26.3"–26.7"	27"–27.5"	28"–29"	29.5"–30.7"	31"–32.3"	32.6"–33.8" 34"–35.4"
Hip, cm	82–85	86–88	89–91	92–94	95–97	98–100	101–103 104–106
Hip, inch	32.2"–33.4"	33.8"–34.6"	35"–35.8"	36.2"–37"	37.4"–38"	38.5"–39.3"	39.7"–40.5" 41"–41.7"
International	S		M		L		XL XXL
Russia (RU)	40	42	44	46	48	50	52 54
Europe (EU)	40	42	44	46	48	50	52 54



GRISHKO® HEAD OFFICE  
Proezd Zavoda Serp i Molot, 2/4  
Moscow, 111250, Russia  
+7 495 980 91 10  
[export@grishko.ru](mailto:export@grishko.ru)

GRISHKO® DISTRIBUTION CENTER  
Grishko Dance s.r.o.  
Jiřího ze Vtelna 1731 (Areal Pragorent)  
193 00 Praha 9 – Horní počernice  
+ 420 727 933 480  
[export@grishko.eu](mailto:export@grishko.eu)



[grishko-world.com](http://grishko-world.com)



[grishkoshop.com](http://grishkoshop.com)

 [grishkoworld](https://www.facebook.com/grishkoworld)

 [grishkoworld](https://www.instagram.com/grishkoworld)