



2021  
Wear Moi  
Designed in France



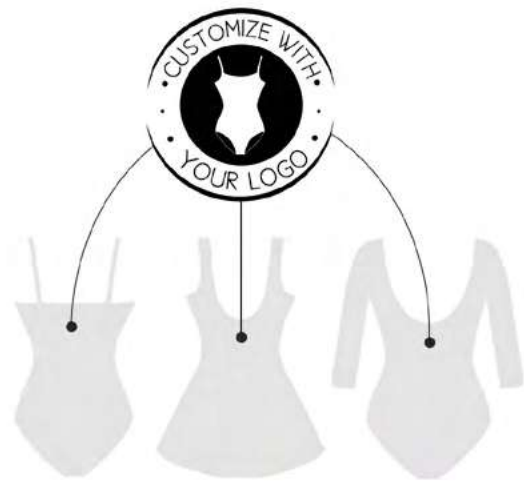
Wear Moi  
375 Avenue St Just – Lot 6 et 7  
83130 LA GARDE – FRANCE  
Phone : +33 (0) 498 01 6000 – Fax : +33 (0) 498 01 6001  
Email : info@wearmoi.com

Wear Moi (North, Central and South America)  
3352 N Broadway – Chicago IL 60657  
Phone : +1 (773) 850 3119 – Fax : +1 (773) 901 2167  
Email : usa@wearmoi.com

Artistic Director : Elisabeth Miegge-Ridet  
Photographers : Daria Chenikova, Olivier Wecxsteen  
Dancers :  
Ana Turzuvhili, Anastasia Plotnikova, Maria Khoreva,  
Arina Biktimirova, Sebia Plantefève, Jing Jing Mao, Kristina Lind,  
Anna Ol, Anna Osadcenko, Ina Lesnakowski,  
Andrew Larose, Leonardo Basilio, Conor Walmsley,  
Sem Sjouke, Jason Reilly, Evan Mckie, Julien Lestel  
Page 74-75 Courtesy of European School of Ballet Jean-Yves Esquerre

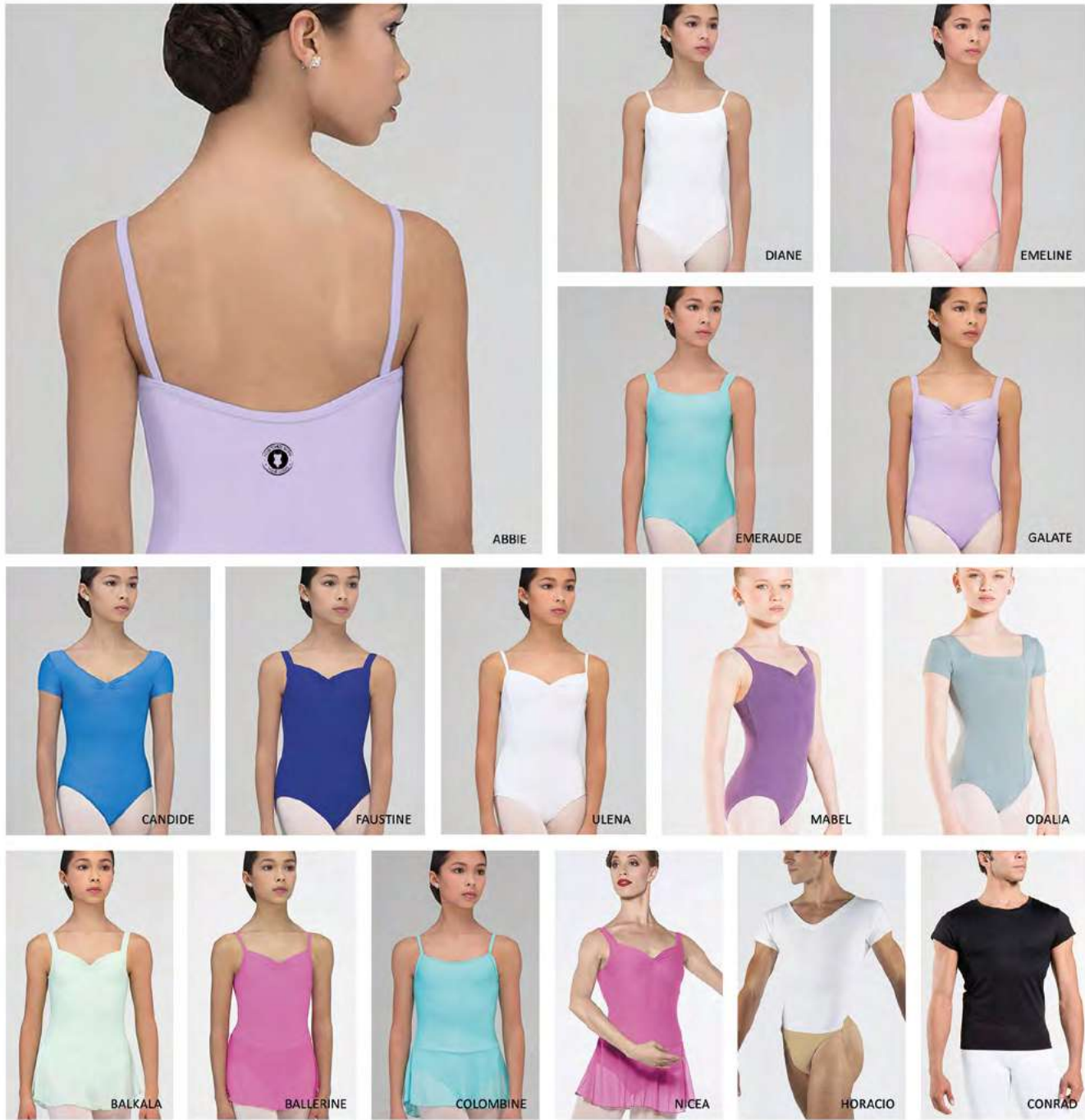
BALLET LADIES AND GIRLS	4
BALLET BABIES	16
FASHION	32
SKIRTS	46
ACCESSORIES	50
ACTIVE WEAR	52
UNDERWEAR	54
TIGHTS	56
WARM UPS	60
MEN	74
BALLET SHOES	88
POINTE SHOES	98
SHOE ACCESSORIES	112
BAGS	116
MASKS	120





# YOUR LOGO YOUR WAY

- Order Quantity:  
Multiples of 3 units per size per color
- No setup fee
- School Logo replaces Wear Moi Logo
- One silkscreen color print (Specify Pantone Color)
- Logo specification:  
1" /25 mm maximum height
- List of eligible products (All Colors)  
ABBIE, DIANE, FAUSTINE, GALATE, EMERAUDE, EMELINE, CANDIDE, COLOMBINE, BALLERINE, BALKALA, NICEA, ULENA, MABEL, ODALIA, HORACIO, CONRAD



# MORE COLOR CHOICE

Over 60 styles available in more than 20 colors  
We offer a large variety of our styles in a broad range of colors

- Order quantity: multiples of 3 units per size per color  
Only apply to options not already available in our catalog.
- Delivery: 3 to 4 weeks



## 1. Choose Color

WHITE
BEIGE
PEACH
PINK
LILAC
PACIFIC
MINT
SKY
LIGHT GREY
DARK GREY
ROSE
RED
FUSHIA
FRENCH BLUE
PURPLE
FOREST GREEN
WALNUT
BURGUNDY
CHOCOLATE
PRUNE
ROYAL BLUE
NAVY
BLACK

## 2. Choose Style

	ABBIE DIANE THALIA FAUSTINE GALATE EMERAUDE EMELINE CORALIE MILO MAUVE MARQUISE MARIE TAMARIS NEW CANDIDE NEW LOVINA CAPRICE* CASSIS* NEW LAVANDE* NEW CYPRES*		IRIS BELINDA*
			DIV42
	COLOMBINE* BALLERINE* BALKALA* NICEA* ARDESIA* AZUREA*		OCTAVE IGOR VERSAO HORACIO NEW JASON NEW OBERON
			HAXO CONRAD NEW ALPIN
	KASSY ANJOU		SACHA
	ALEGRO* DOLLY* DELIA* MAGDA* APOLO*		ALBAN HIDALGO
	IKITA ANA BOUNTY* AREZZA*		MARCEAU ODEON
	GIPSY MACARON ARIELLE		TANGO CAPRI ATLAS ROMEO*

\*Not available in Walnut, Red, Chocolate and Prune.

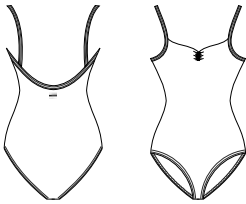
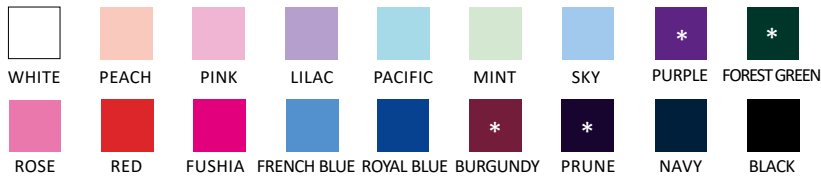




# ABIE

**Children : 4/6 - 6/8 - 8/10 - 10/12 - 12/14**  
**Ladies : XS - S - M - L - XL\*\* - XXL\*\***

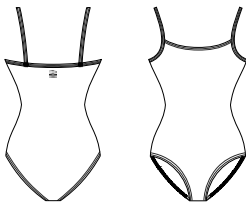
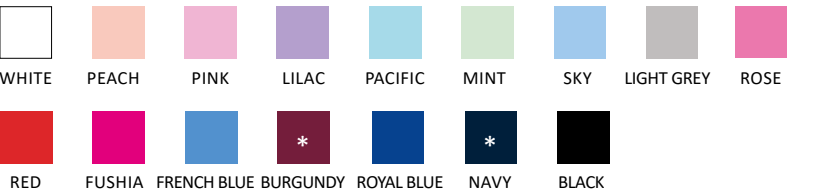
\* Not available in sizes 4/6 and 6/8  
 \*\* Available in Black, Navy and Burgundy only  
 Basic, simple and elegant camisole leotard with a mid-back profile and front pinch. Full front lining. Available in 20 colors. Microfiber



# DIANE

**Children : 4/6 - 6/8 - 8/10 - 10/12 - 12/14**  
**Ladies : XS - S - M - L - XL\*\* - XXL\*\***

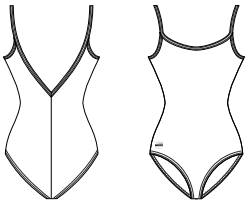
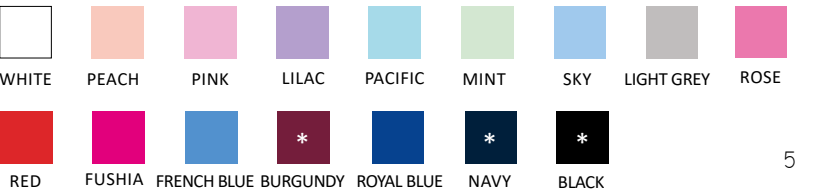
\* Not available in sizes 4/6 and 6/8  
 \*\* Available in black only  
 Simple, classic, refined. A perfect uniform piece. Full front lining camisole leotard. Available in a wide range of colors. Microfiber



# THALIA

**Children : 4/6 - 6/8 - 8/10 - 10/12 - 12/14**  
**Ladies : XS - S - M - L**

\* Not available in sizes 4/6 and 6/8  
 Basic camisole leotard with a V-back and back seam. Full front lining. Available in 16 colors. Microfiber







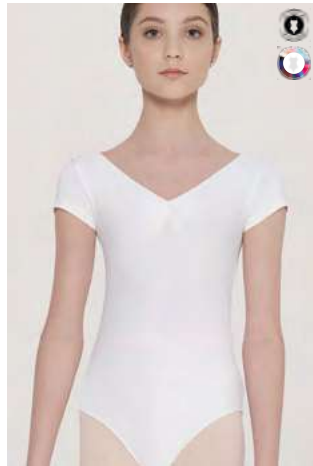
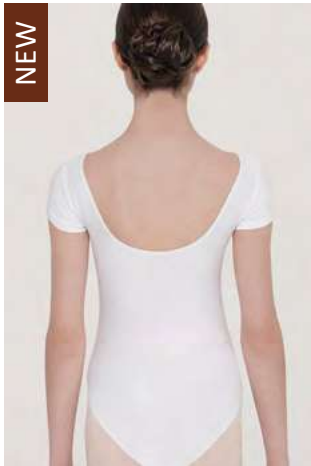
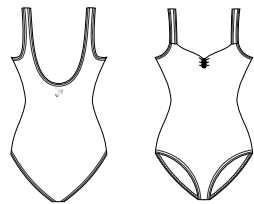
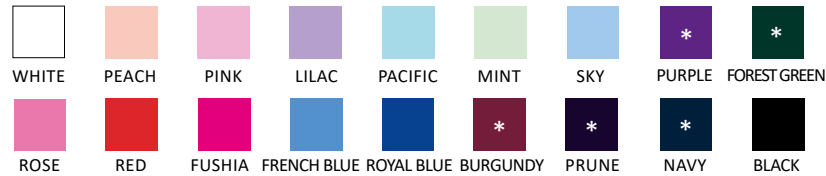
# FAUSTINE

Children : 4/6 - 6/8 - 8/10 - 10/12 - 12/14

Ladies : XS - S - M - L - XL\*\* - XXL\*\*

\* Not available in sizes 4/6 and 6/8

\*\* Available in Black, Navy and Burgundy only  
Microfiber basic tank leotard with front pinch. Full front lining and U-cut back. Available in 20 colors. Microfiber



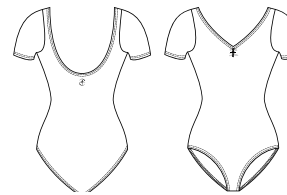
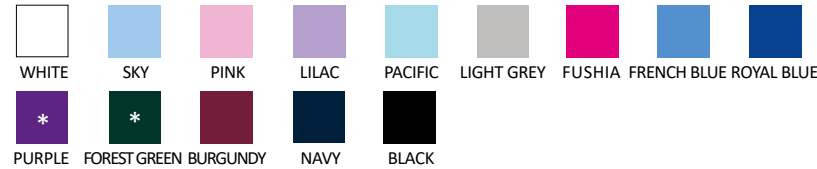
# CANDIDE

Children : 4/6 - 6/8 - 8/10 - 10/12 - 12/14

Ladies : XS - S - M - L - XL\*\* - XXL\*\*

\* Not available in sizes 4/6 and 6/8

\*\* Available in Black, Navy and Burgundy only  
Classic short sleeve leotard with gathered scoop neckline and scoop back. Full front lining. Microfiber



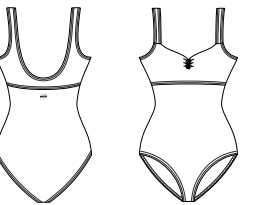
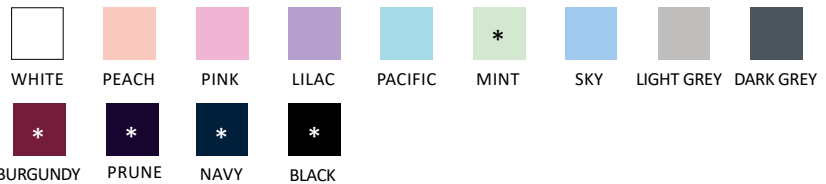
# GALATE

Children : 4/6 - 6/8 - 8/10 - 10/12 - 12/14

Ladies : XS - S - M - L

\* Not available in sizes 4/6 and 6/8

Elegant pinch front tank leotard with under bust detail made with soft microfiber. Full front lining. Microfiber



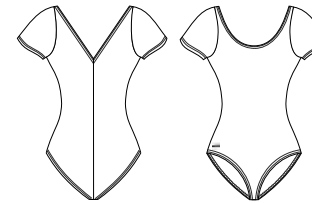
# CORALIE

Children : 4/6 - 6/8 - 8/10 - 10/12 - 12/14

Ladies : XS - S - M - L - XL\*\* - XXL\*\*

\* Not available in sizes 4/6 and 6/8

\*\* Available in Black, Navy and Burgundy only  
Short sleeve microfiber basic, featuring a modest height back cut and full front lining. Available in 16 colors. Microfiber



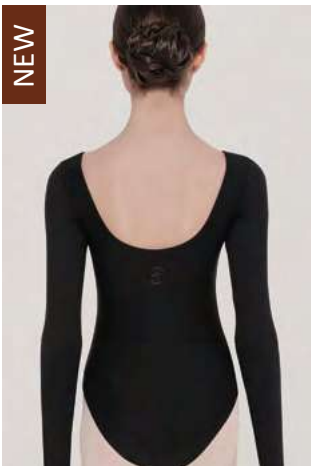
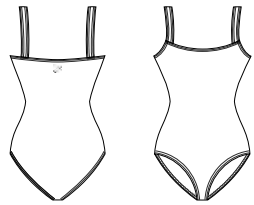
# EMERAUDE

Children : 4/6 - 6/8 - 8/10 - 10/12 - 12/14

Ladies : XS - S - M - L

\* Not available in sizes 4/6 and 6/8

Basic square front tank style leotard. Full front lining. Available in 16 colors. Microfiber

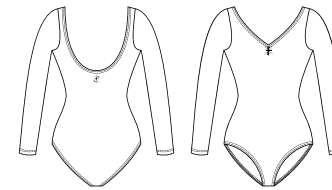


# LOVINA

Children : 8/10 - 10/12 - 12/14

Ladies : XS - S - M - L - XL\*\* - XXL\*\*

\*\* Available in Black, Navy and Burgundy only  
Classic long sleeve leotard with gathered scoop neckline and scoop back. Full front lining. Microfiber



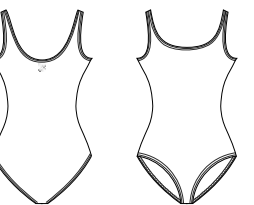
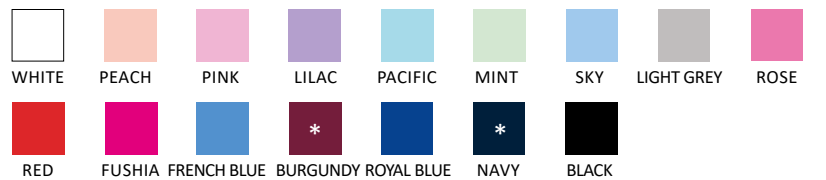
# EMELINE

Children : 4/6 - 6/8 - 8/10 - 10/12 - 12/14

Ladies : XS - S - M - L

\* Not available in sizes 4/6 and 6/8

Microfiber basic tank leotard. Modest and comfortable, with full front lining. Available in 16 colors. Microfiber

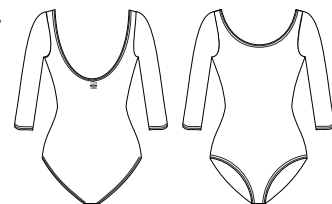


# MILO

Children : 2/4 - 4/6 - 6/8 - 8/10 - 10/12 - 12/14

Ladies : XS - S - M - L

Basic camisole leotard with full front lining, 3/4 length sleeve and scoop neck. Full front lining. Microfiber



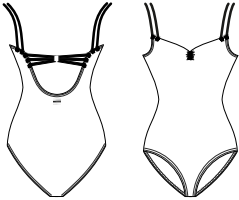




# MAUVE

Children : 8/10 - 10/12 - 12/14  
Ladies : XS - S - M - L

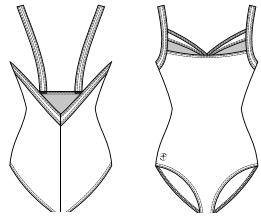
A new take on uniforms, Mauve features fashion straps on the back, and all business on the front. The best of two worlds combined in this basic/fashion piece. Pinched front, strappy back. Full front lining. Microfiber



# CYPRES

Children : 8/10 - 10/12 - 12/14  
Ladies : XS - S - M - L

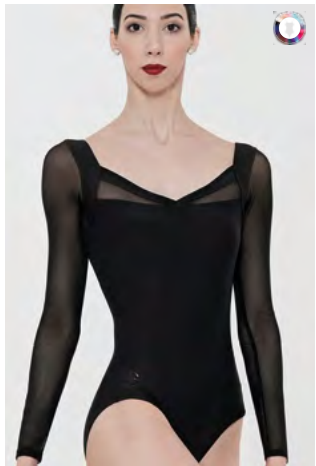
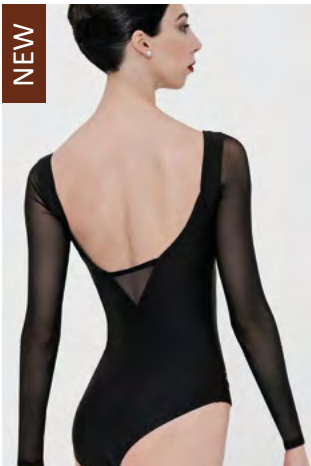
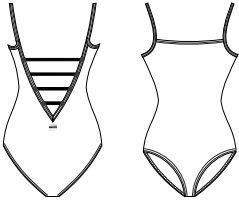
Microfiber camisole leotard detailed with sheer stretch tulle, revealing skin on the upper neckline and middle back through a small triangle cutout. Deep open back. Front lining. Microfiber - Stretch Tulle



# MARQUISE

Children : 8/10 - 10/12 - 12/14  
Ladies : XS - S - M - L

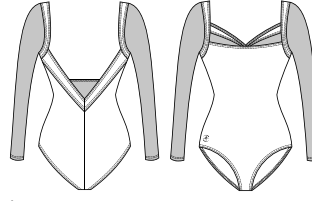
A new take on uniforms, classic line on the front and fashion straps on deep V-back. The best of two worlds combined in this basic/fashion piece. Full front lining. Microfiber



# LAVANDE

Ladies : XS - S - M - L - XL - XXL

Long-sleeved microfiber leotard detailed with sheer stretch tulle, beautifully revealing parts of the arms, upper neckline, and middle-back. Deep open back. Front lining. Microfiber - Stretch Tulle



# MARIE

Children : 8/10 - 10/12 - 12/14  
Ladies : XS - S - M - L

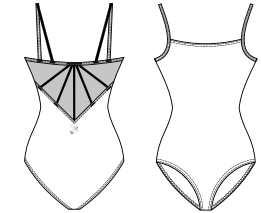
A beautiful timeless look created by this basic/fashion leotard. Fun crisscross straps on the back with medium U-drop back. Pinched front and full front lining. Microfiber



# CAPRICE

Children : 8/10 - 10/12 - 12/14  
Ladies : XS - S - M - L

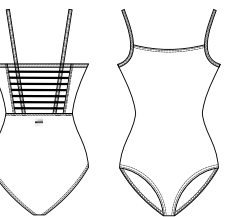
Camisole strapped leotard with a clean front and a mesh back featuring thin straps plated on it. Full front lining. Microfiber - Stretch Tulle



# TAMARIS

Children : 8/10 - 10/12 - 12/14  
Ladies : XS - S - M - L

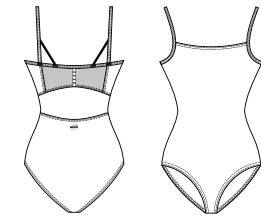
Camisole style leotard with clean front. The back connects horizontal and vertical straps onto the waist. Full front lining. Microfiber



# CASSIS

Children : 8/10 - 10/12 - 12/14  
Ladies : XS - S - M - L

Camisole style leotard with a clean front and a mesh band in the back with small buttons down the middle. Full front lining. Microfiber - Stretch Tulle







# ULENA

Children : 4/6 - 6/8 - 8/10 - 10/12

Ladies : XS - S - M - L

\* Not available in sizes 4/6 and 6/8

ULENA features a camisole style cotton leotard, with three slimming seams on sides and a refined mid back U-Cut. Ethereal and beautiful. Full front lining. Cotton Elasthan



WHITE



PINK



LILAC



LIGHT BLUE



GREY



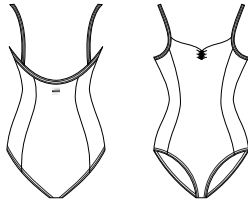
PRUNELLE



NAVY



BLACK



# MABEL

Children : 4/6 - 6/8 - 8/10 - 10/12

Ladies : XS - S - M - L

\* Not available in sizes 4/6 and 6/8

MABEL features a beautiful empire waist tank style cut for a classic line with added support. Front pinch and a gorgeous V-Back with our signature ballet cut. Full front lining. Cotton Elasthan



WHITE



PINK



LILAC



LIGHT BLUE



GREY



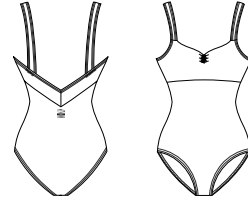
PRUNELLE



NAVY



BLACK



# CABUKI

Children : 4/6 - 6/8 - 8/10 - 10/12

Ladies : XS - S - M - L

\* Not available in sizes 4/6 and 6/8

CABUKI is a tank style leotard with Wear Moi signature cut. Featuring an empire waist with slimming double seam front lines and a straight back with a center seam. Full front lining. Cotton Elasthan



WHITE



PINK



LILAC



LIGHT BLUE



GREY



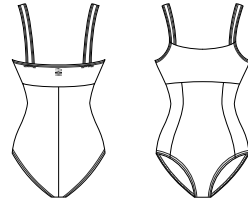
PRUNELLE



NAVY



BLACK



# ODALIA

Children : 4/6 - 6/8 - 8/10 - 10/12

Ladies : XS - S - M - L

\* Not available in sizes 4/6 and 6/8

ODALIA is a stunning modern take on a classic cap sleeve leotard. Featuring a square cut and slimming seams on the front and back. Full front lining. Cotton Elasthan



WHITE



PINK



LILAC



LIGHT BLUE



GREY



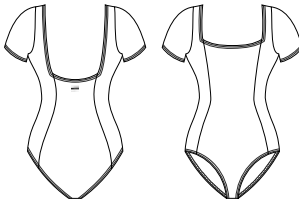
PRUNELLE



NAVY



BLACK



# ANJOU

Children : 8/10 - 10/12 - 12/14

Ladies : XS - S - M - L - XL

Medium strapped women's unitard with accentuated neckline and a gather on front and a U-shaped back. Chest lining. Microfiber



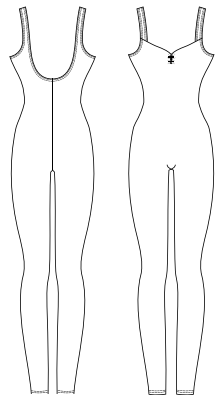
BEIGE



NAVY



BLACK



# KASSY

Children : 8/10 - 10/12 - 12/14

Ladies : XS - S - M - L - XL

Camisole women's unitard with accentuated neckline and a gather on front and a V-shape back. Chest lining. Microfiber



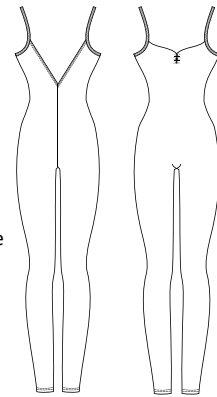
BEIGE



NAVY



BLACK







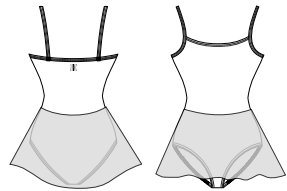
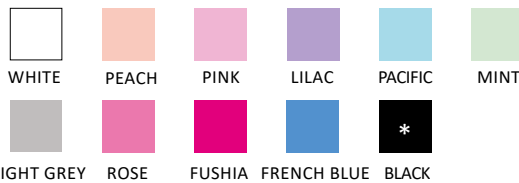
# COLOMBINE

Children : 4/6 - 6/8 - 8/10 - 10/12

Ladies : XS - S - M - L

\* Not available in sizes 4/6 and 6/8

Classic full front lining camisole dress, featuring an attached four-way stretch tulle skirt. Available in a wide range of colors. Microfiber - Stretch Tulle



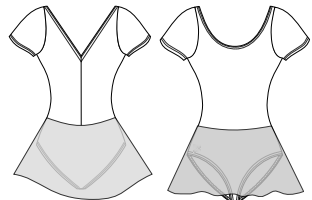
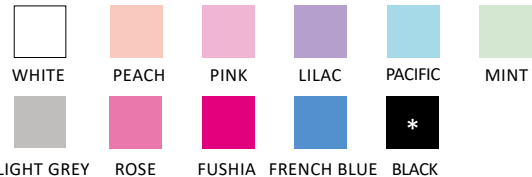
# ARDESIA

Children : 4/6 - 6/8 - 8/10 - 10/12 - 12/14

Ladies : XS - S - M - L

\* Not available in sizes 4/6 and 6/8

Short sleeve microfiber basic dress, featuring a modest, high back-cut and an attached four-way stretch tulle skirt. Fully front Lining. Available in 11 colors. Microfiber - Stretch Tulle



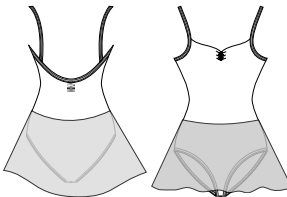
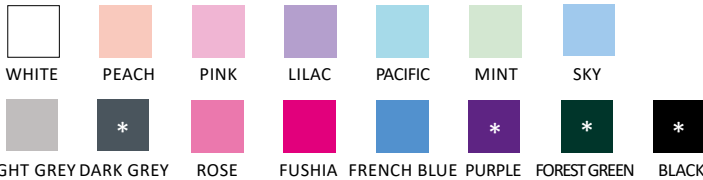
# BALLERINE

Children : 4/6 - 6/8 - 8/10 - 10/12 - 12/14

Ladies : XS - S - M - L

\* Not available in sizes 4/6 and 6/8

Microfiber basic, simple and elegant camisole dress, with a mid-back profile, front pinch and attached four-way stretch tulle skirt. Full front lining. Available in 15 colors. Microfiber - Stretch Tulle



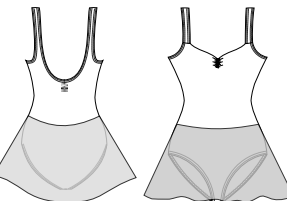
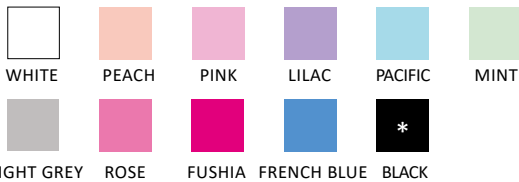
# BALKALA

Children : 4/6 - 6/8 - 8/10 - 10/12 - 12/14

Ladies : XS - S - M - L

\* Not available in sizes 4/6 and 6/8

Microfiber basic tank dress with front pinch. Full front lining, U-cut back and attached four-way stretch tulle skirt. Available in 11 colors. Microfiber - Stretch Tulle



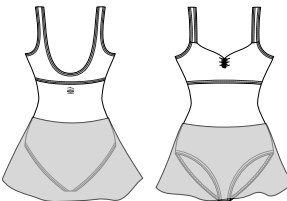
# NICEA

Children : 4/6 - 6/8 - 8/10 - 10/12

Ladies : XS - S - M - L

\* Not available in sizes 4/6 and 6/8

Classic tank with flattering empire seaming, sweetheart neckline, attached stretch tulle skirt, soft microfiber bodice, and full front lining. Microfiber - Stretch Tulle

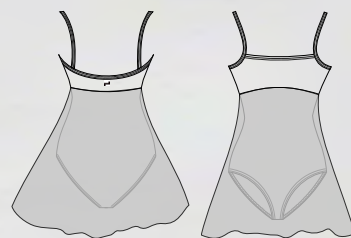
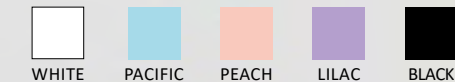


# AZUREA

Children : 6/8 - 8/10 - 10/12 - 12/14

Ladies : XS - S - M - L

This thin-strapped camisole dress, with empire mesh tulle overlay is perfect for the studio and will look absolutely dazzling on stage. Microfiber - Stretch Tulle



AZUREA P.13 - OMEGA P.99



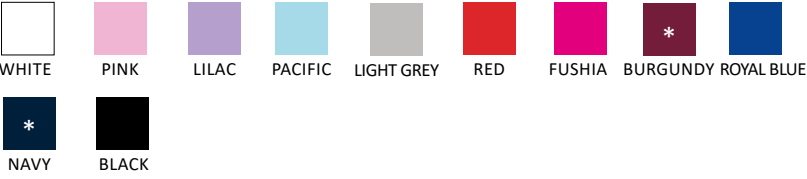


# GIPSY

**Children : 4/6 - 6/8 - 8/10 - 10/12**  
**Ladies : XS - S - M - L - XL\*\* - XXL\*\***

\* Not available in sizes 4/6 and 6/8  
 \*\* Available in black only

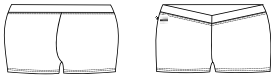
Gipsy short features soft microfiber elastane fabric and a comfortable elastic waistband.  
 Microfiber



# MACARON

**Children : 6/8 - 8/10 - 10/12**  
**Ladies : XS - S - M - L**

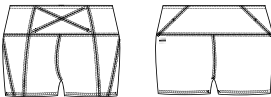
These hotpant shorts provide a flattering silhouette in the studio or on stage.  
 Microfiber



# ARIELLE

**Children : 6/8 - 8/10 - 10/12**  
**Ladies : XS - S - M - L**

Booty shorts that fit at the natural waistline. Perfect for any dance style.  
 Microfiber





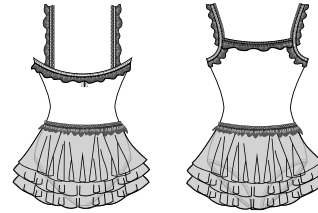
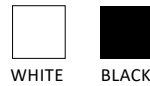
# BALLET BABIES



## BAMBOU

**Children :**  
2/4 - 4/6 - 6/8 - 8/10 - 10/12 - 12/14

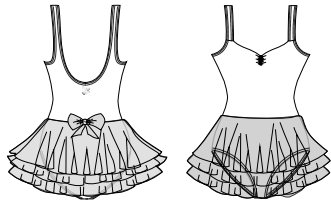
Tutu with three layers of glittering tulle lined with lace on trim of attached camisole strapped leotard and top of skirt. Full front lining. Microfiber - Lace - Tulle



## NOISETTE

**Children :**  
2/4 - 4/6 - 6/8 - 8/10 - 10/12 - 12/14

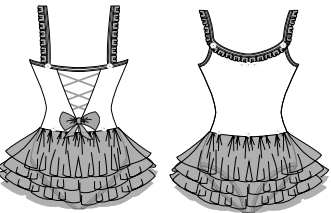
A pinch-front children's tutu dress with three layers of tulle and bow accent. This beautiful dress is perfect for the youngest dancer. Bust lining. Microfiber - Glittering Tulle



## PRALINE

**Children :**  
2/4 - 4/6 - 6/8 - 8/10 - 10/12 - 12/14

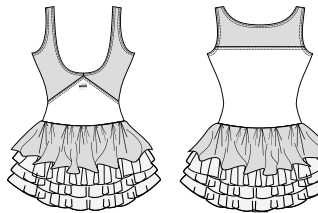
Tutu-cute, a stylish and classy take on a kid's fashion. This four-layer tutu dress offers soft ruffle, mini roses and crisscross detail. Any little ballerina would love this dress. Microfiber - Glittering Tulle



## ACAJOU

**Children :**  
2/4 - 4/6 - 6/8 - 8/10 - 10/12 - 12/14

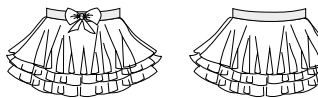
Medium strapped tutu dress featuring floral motifs printed on stretch veil with fine opaque lines raised above bust and back. Features an attached tutu with a stretch veil floral pattern. Full front lining. Microfiber - Printed Stretch Stripes Veil - Tulle



## NUAGE

**Children :**  
2/4 - 4/6 - 6/8 - 8/10 - 10/12 - 12/14

Beautiful pull-over children's tutu with three layers of tulle and a bow decal. Microfiber - Glittering Tulle



PRALINE P.17







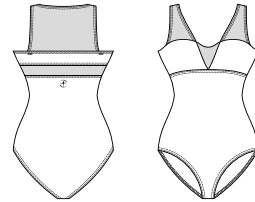
NEW



# HESTIA

Children : 6/8 - 8/10 - 10/12 - 12/14  
Ladies : XS - S - M - L

Fancy 2-fabric leotard. Solid color microfiber and flocked stretch tulle yokes crossing on the upper body. Heart-shaped neckline. Front lining.  
Microfiber - Flocked Stretch Tulle



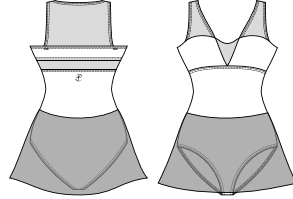
NEW



# SORAIA

Children : 6/8 - 8/10 - 10/12 - 12/14  
Ladies : XS - S - M - L

Fancy 3-fabric leotard-skirt combo. Solid color microfiber and flocked sheer stretch tulle yokes crossing on the upper body. Heart-shaped neckline. Sheer tulle skirt. Front lining.  
Microfiber - Flocked Stretch Tulle - Stretch Tulle



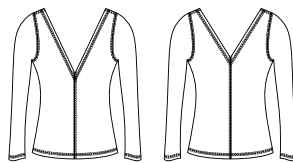
NEW



# IBERIS

Ladies : XS - S - M - L

Long-sleeve flocked sheer stretch tulle top with V-neck cut on front and back.  
Flocked Stretch Tulle



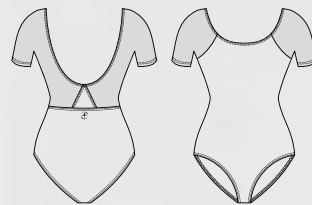
# ZENON

Children : 6/8 - 8/10 - 10/12 - 12/14  
Ladies : XS - S - M - L

2-fabric short sleeve leotard. Raglan-sleeve, no armhole or shoulder seam. Small triangle solid color microfiber yoke in the back. Front lining.  
Microfiber - Flocked Stretch Tulle



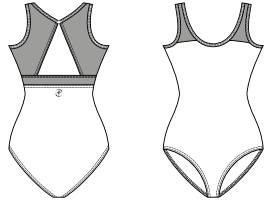
NEW







# AMALTEA

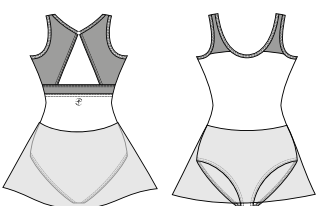


Children : 4/6 - 6/8 - 8/10 - 10/12 - 12/14  
Ladies : XS - S - M - L

Printed 2-fabric leotard with flower-pattern stitched microfiber yoke on the front, flattering the bustline. Triangle cut-out in the back, fastened by a fabric-covered button. Front lining. Microfiber - Openwork Microfiber



# DIAMANT

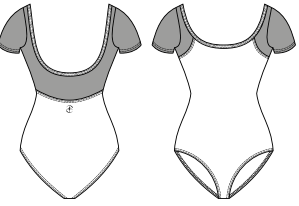


Children : 4/6 - 6/8 - 8/10 - 10/12 - 12/14  
Ladies : XS - S - M - L

Printed 3-fabric leotard-skirt combo with flower-pattern stitched microfiber yokes on the front, flattering the bustline. Triangle cut-out in the back, fastened by a fabric-covered button. Sheer tulle skirt. Front lining. Microfiber - Openwork Microfiber - Stretch Tulle



# HIBISCUS



Children : 4/6 - 6/8 - 8/10 - 10/12 - 12/14  
Ladies : XS - S - M - L

Printed 2-fabric leotard with front yokes, sleeves, and back yokes, in a flower-pattern stitched fabric, flattering the bustline and open back. Front lining. Microfiber - Openwork Microfiber



## DIAMANT

Succumb to one of our models and shine at every step. The triangle cut on the back and the three fabrics of this skirted leotard will make you even more graceful.







CARLINE P.26 - DAPHNE P.46 | HORACIO P.77 - ORION P.80



CANNELLE P.26 - OMEGA P.99

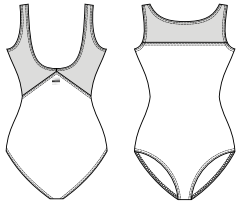




# AZALEE

**Children : 4/6 - 6/8 - 8/10 - 10/12 - 12/14**  
**Ladies : XS - S - M - L**

Medium strapped leotard featuring floral motifs printed on stretch veil with fine opaque lines raised above bust and an open back. Full front lining.  
Microfiber - Printed Stretch Stripes Veil



PEACH



PINK



LILAC



PACIFIC



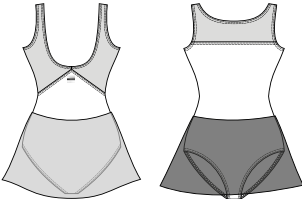
BLACK



# CANNELLE

**Children : 4/6 - 6/8 - 8/10 - 10/12 - 12/14**  
**Ladies : XS - S - M - L**

Medium strapped dress featuring floral motifs printed on stretch veil with fine opaque lines raised above bust and an open back. Material patterns are incorporated in attached skirt with solid tulle in front and fancy veil in back. Full front lining.  
Microfiber - Printed Stretch Stripes Veil - Stretch Tulle



PEACH



PINK



LILAC



PACIFIC



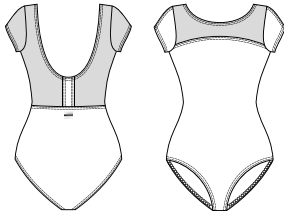
BLACK



# CARLINE

**Children : 4/6 - 6/8 - 8/10 - 10/12 - 12/14**  
**Ladies : XS - S - M - L**

Short sleeved leotard with floral motifs printed on transparent stretch veil with fine opaque lines raised above bust, and up to waist on back. Full front lining.  
Microfiber - Printed Stretch Stripes Veil



PEACH



PINK



LILAC



PACIFIC



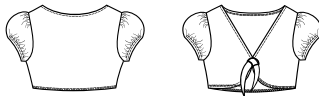
BLACK



# MAGNOLIA

**Children : 4/8 - 8/12**  
**Ladies : XS/S - M/L**

Short balloon sleeved cropped cardigan with floral motifs printed on a stretch veil with fine opaque lines neatly gathered to tie in front.  
Printed Stretch Stripes Veil



PEACH



PINK



LILAC



PACIFIC



BLACK



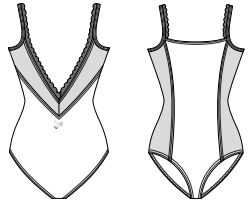




# EVIDENCE

**Children : 6/8 - 8/10 - 10/12 - 12/14**  
**Ladies : XS - S - M - L**

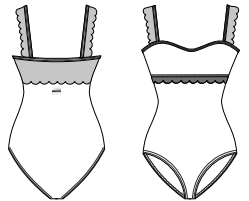
A tank-style camisole leotard with plunging V-shaped back, with a delicate lace trim. Full front lining.  
 Microfiber - Stretch Lace



# ERINE

**Children : 6/8 - 8/10 - 10/12 - 12/14**  
**Ladies : XS - S - M - L**

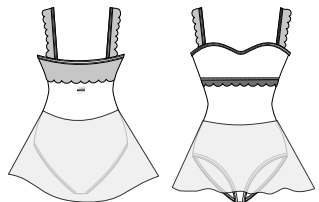
Tank leotard with a scalloped trim lace overlay.  
 Microfiber - Stretch Lace



# ETINCELLE

**Children : 6/8 - 8/10 - 10/12 - 12/14**  
**Ladies : XS - S - M - L**

A tank-style dress featuring the elegant scalloped lace trim overlay and four-way stretch tulle skirt. Chest lining.  
 Microfiber - Stretch Lace - Stretch Tulle



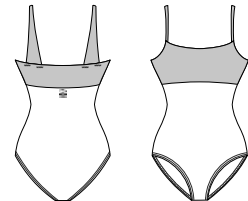




DUCHESSE P.30



## DUCHESSE



**Children : 6/8 - 8/10 - 10/12**

**Ladies : XS - S - M - L**

Leotard with gorgeous 3-D filigree flower detail on a soft microfiber across the bust and the back. Super soft and supportive straps. Full front lining, Wear Moi signature cut and fit.

Microfiber - Stretch Tulle



LILAC



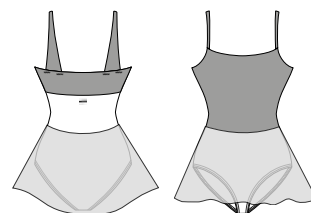
LIGHT GREY



BLACK



## ATENA



**Children : 6/8 - 8/10 - 10/12**

**Ladies : XS - S - M - L**

Full 3-D filigree flower detail on a soft microfiber across the front and back. Featuring a four-way stretch mesh skirt with rolled hem, super soft supportive straps and bust lining, this dress is perfect for class and performance.

Microfiber - Stretch Tulle



LILAC



LIGHT GREY

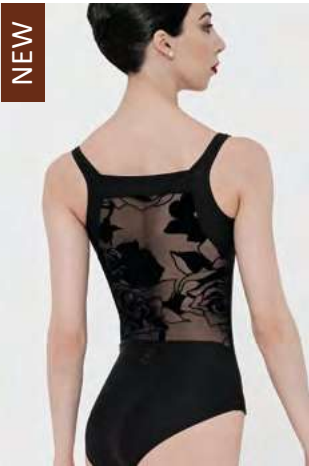


BLACK



ATENA P.30





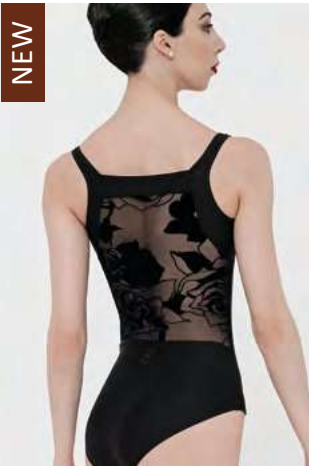
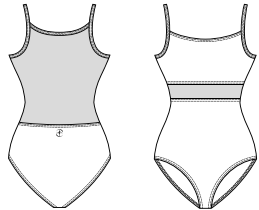
# AZURITE

Ladies : XS - S - M - L

Camisole leotard with flocked flower pattern front yoke. The front cut enhances the bustline. The back of the leotard is made of sheer flocked stretch tulle, down to the waistline. Front lining. Microfiber - Flocked Stretch Tulle



BLACK  
BEIGE



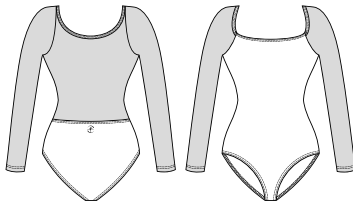
# SEKOIA

Ladies : XS - S - M - L

Fancy wide neckline leotard enhanced by long sleeves, featuring flocked tulle on the shoulders and back. The back of the leotard is made of flocked sheer stretch tulle, transparent down to the waistline. Front lining. Microfiber - Flocked Stretch Tulle



BLACK  
BEIGE



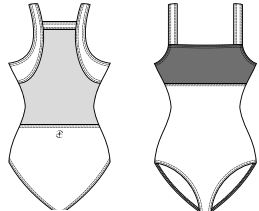
# LAIKA

Ladies : XS - S - M - L

Fancy wide strap leotard cut-out along the bust, detailed with rose pattern flocked tulle front yoke. The back of the leotard is made of sheer stretch tulle, attached by solid color microfiber bands. Front lining. Microfiber - Flocked Stretch Tulle



BLACK



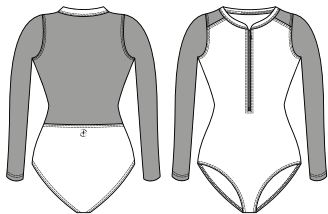
# FELICITE

Ladies : XS - S - M - L

Fancy high-neck long-sleeved leotard with front zipper. Sheer back, sleeves, and shoulders reveal the skin and contour the body with large flowers, like a tattoo. Front lining. Microfiber - Flocked Stretch Tulle



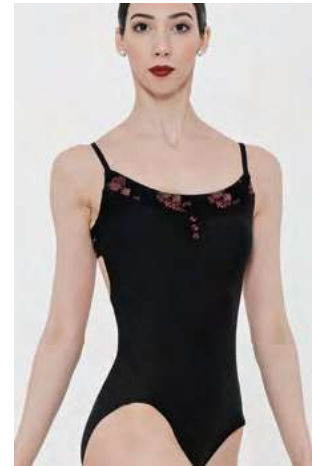
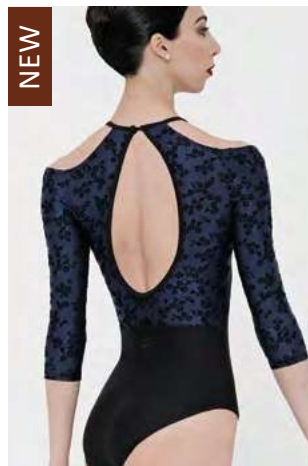
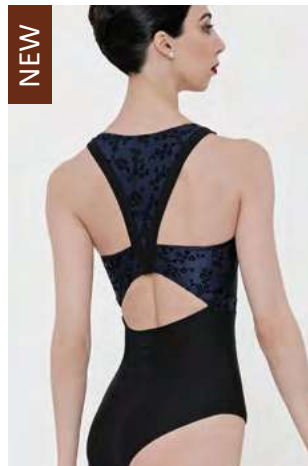
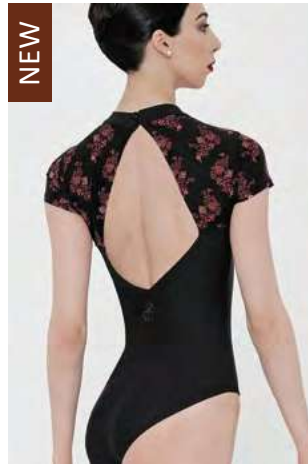
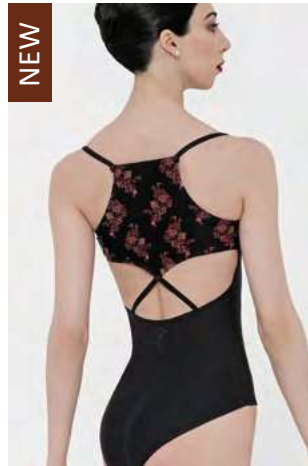
BLACK



# FASHION







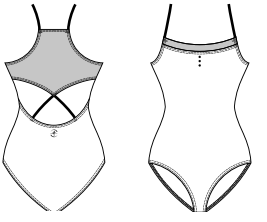
# BUTIS

Ladies : XS - S - M - L

Thin strap leotard in microfiber and fancy printed microfiber. Classic front adorned with 3 small printed fabric buttons just below the neckline. Printed back yoke supported by thin symetrical straps. Front lining. Microfiber - Printed Microfiber



BLACK  
RASPBERRY



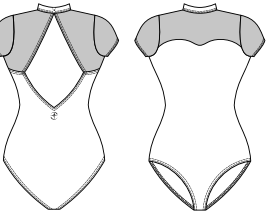
# DEMETER

Ladies : XS - S - M - L

High-neck leotard detailed with printed microfiber on the upper part, front, back, and sleeves. Fastens in back at the neck with 2 fabric-covered buttons. Pretty diamond shape open back. Front lining. Microfiber - Printed Microfiber



BLACK  
RASPBERRY



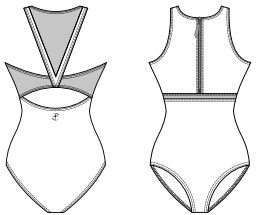
# BRIZO

Ladies : XS - S - M - L

Crew neck leotard with zippered front opening. Embossed tiny-flower printed microfiber back yokes and small band below the bustline. Front lining. Microfiber - Flocked Microfiber



BLACK  
NIGHTBLUE



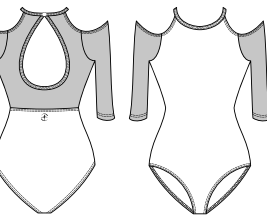
# TIFANY

Ladies : XS - S - M - L

Crew neck leotard with one button in the middle of the back, detailed by a large tear-shape open back. Three-quarter sleeves, cut-out on the shoulders and fastened at the neck. Embossed tiny-flower print on the back and sleeves. Front lining. Microfiber - Flocked Microfiber



BLACK  
NIGHTBLUE







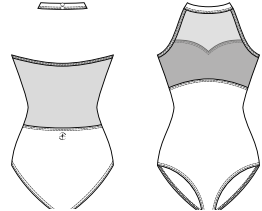
# IONA

Ladies : XS - S - M - L

Fancy open back leotard detailed with flocked sheer stretch tulle on the heart-shaped neckline, the back, and down to the waistline. Cut-out along the bust underlined with fancy fabric. Closes at the back with a fabric-covered button. Front lining. Microfiber - Flocked Stretch Tulle



BLACK  
BEIGE



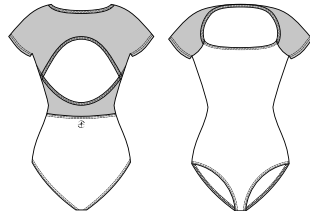
# LINDIA

Ladies : XS - S - M - L

Fancy wide neckline leotard detailed by a flocked sheer stretch tulle yoke on the shoulders, upper arms and back. The back of the leotard is made of sheer flocked stretch tulle, down to the waistline. Front lining. Microfiber - Flocked Stretch Tulle



BLACK  
BEIGE



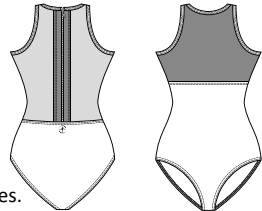
# TUCANA

Ladies : XS - S - M - L

Fancy 3-fabric leotard with crew neck and deep-cut armholes. The back is highlighted with sheer stretch tulle down to the waist, detailed with 2 flower-pattern strips bordering the back zipper. Front is detailed with flower-pattern printed microfiber down to below the chest. Front lining. Microfiber - Printed Microfiber - Stretch Tulle



BLACK  
RASPBERRY



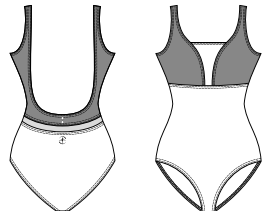
# BANBA

Ladies : XS - S - M - L

Printed 3-fabric leotard, with flower-pattern microfiber yoke on the front, flattering the upper body. Deep U shape back detailed with a small tulle band and 2 fabric-covered buttons. Front lining. Microfiber - Printed Microfiber - Stretch Tulle



BLACK  
RASPBERRY

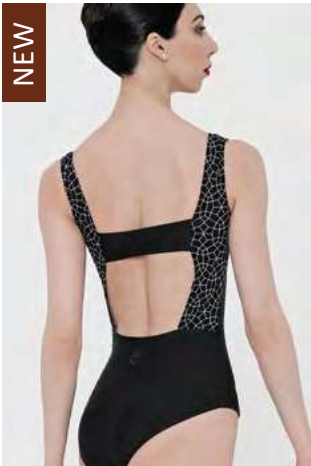
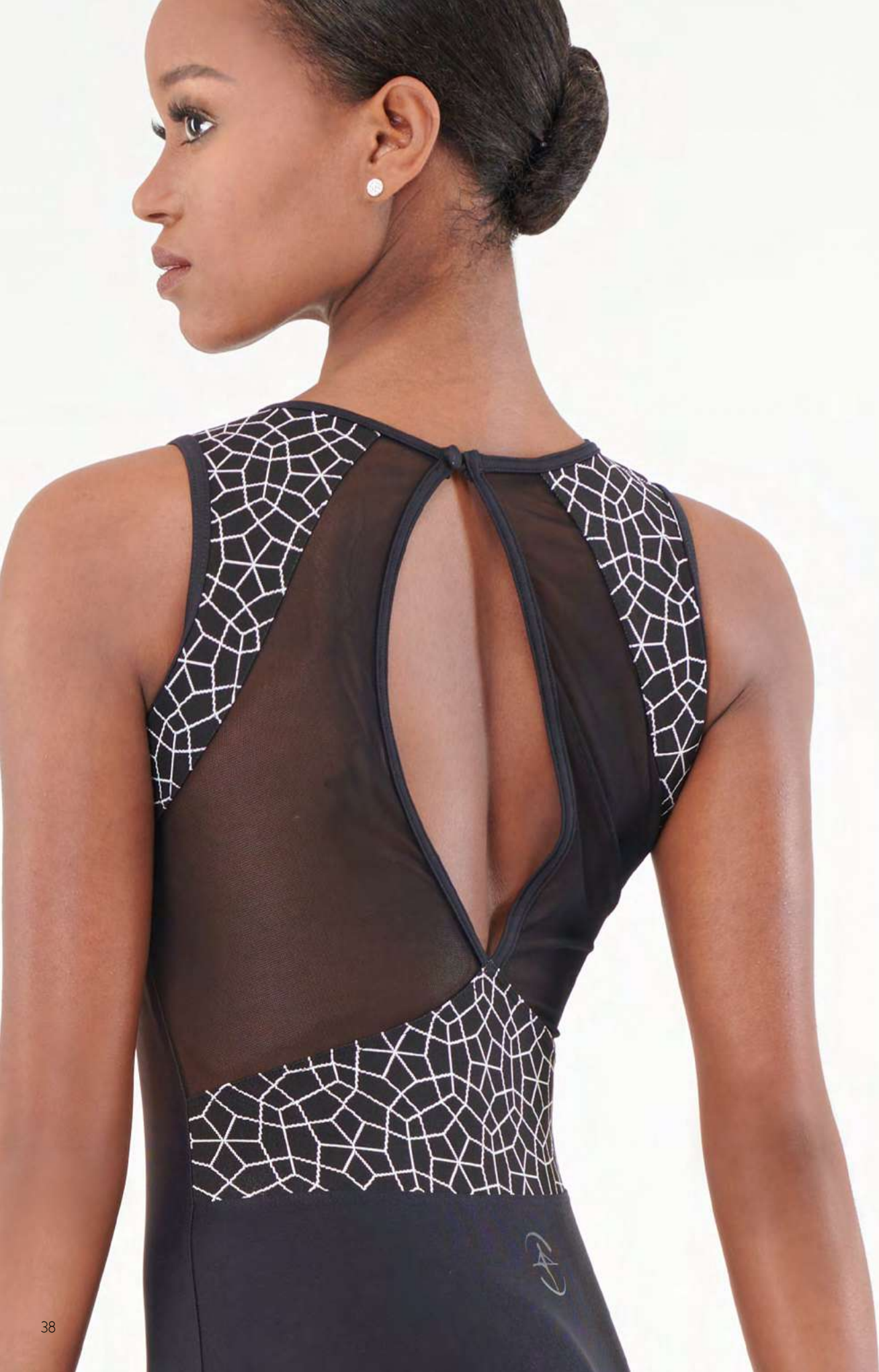


## IONA

To extend the dream beyond the stage, let yourself be tempted by this open-back fancy leotard. The layout of the flowered sheer tulle and the heart-shaped neckline will give you a sophisticated look.



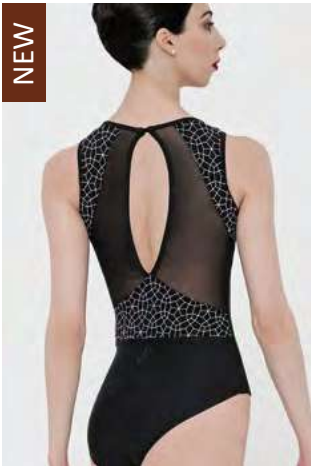
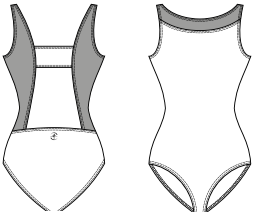




# LENAE

Ladies : XS - S - M - L

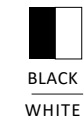
2-fabric wide strap leotard with boat neckline and deep printed microfiber hourglass shape open back, showing the skin down to the waistline. A band runs across the opening for support in the middle of the back. Front lining. Microfiber - Jacquard Microfiber



# VALENTIA

Ladies : XS - S - M - L

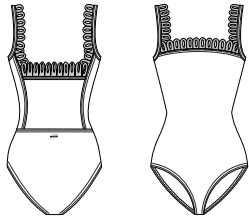
Fancy 3-fabric leotard in sheer stretch tulle, bicolor Jacquard, and solid color microfiber. Deep-cut armholes and crew neckline, fastened by one single button. Fancy 3-fabric back yokes reveal the skin. Front lining. Microfiber - Jacquard Microfiber - Stretch Tulle



# ARLETTY

Ladies : XS - S - M - L

This tank style fashion leotard shows off the chic detail of the lace-like flocked mesh. Beautiful detail on the back provides extra support and helps to hide a nude support bra if needed. Open lower back creates an unforgettable look on this one of a kind piece. Full front lining. Microfiber - Flocked Stretch Tulle



# EMMA

Ladies : XS - S - M - L

Chic, elegant and stylish. This gorgeous cap sleeve leotard features flocked light beige mesh in a truly unique pattern. Open square mid-back with lace like panel on lower back. This piece is sure to catch your eye. Wear Moi classic ballet leg cut and full front lining. Microfiber - Flocked Stretch Tulle







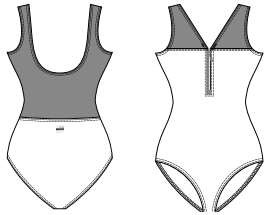
# EMY

Ladies : XS - S - M - L

Tank leotard with red front zip and transparent tulle panels on front and to back waist. Full front lining. Microfiber - Printed Stretch Tulle



BLACK  
RED



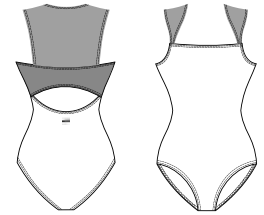
# ASTANA

Ladies : XS - S - M - L

Fancy medium strapped leotard mixing transparency and bi-color printing on the straps. The shoulders connect to a mesh band on the mid-back and a cutout to the waistline. Full front lining. Microfiber - Printed Microfiber - Stretch Tulle



BLACK  
RASPBERRY



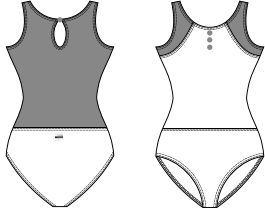
# MANX

Ladies : XS - S - M - L

Tank leotard with tulle printed on shoulders and back, detailed with three small buttons on front and a drop shape opening on back, closed by a small button. Full front lining. Microfiber - Printed Stretch Tulle



BLACK  
RED



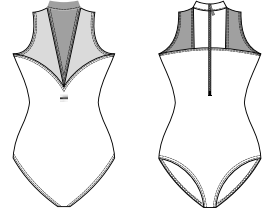
# SATIS

Ladies : XS - S - M - L

High neck cut leotard with a front zip opening. A microfiber bi-color pattern that plays with transparency lays on the shoulders leading to a V-shape in the back surrounded by mesh to the mid-back. Full front lining. Microfiber - Printed Microfiber - Stretch Tulle



BLACK  
RASPBERRY



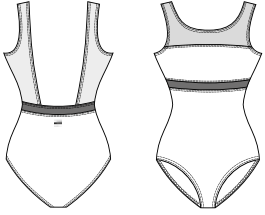
# MIMOSA

Ladies : XS - S - M - L

Tank strapped leotard with deep neckline and open back. The straps and upper part consist of fancy microfiber with a band of transparent stretch tulle around the entire waist. Full front lining. Microfiber - Printed Microfiber - Stretch Tulle



BLACK  
IVORY



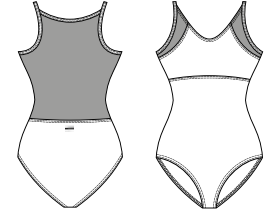
# ALEGRIA

Ladies : XS - S - M - L

Two-material fancy leotard with printed stretch tulle on the high front going to the back waist. Full front lining. Microfiber - Printed Stretch Tulle



BLACK  
GOLD



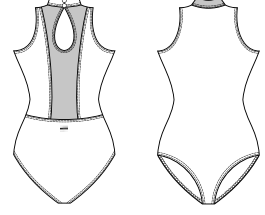
# OPALE

Ladies : XS - S - M - L

Two-material leotard with wide cut armholes and a high collar with drop shaped opening in back closed by two buttons. Full front lining. Microfiber - Printed Microfiber



BLACK  
IVORY



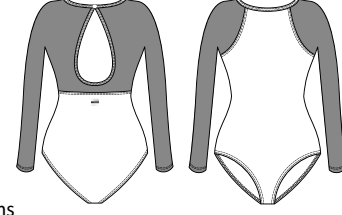
# SOLEN

Ladies : XS - S - M - L

Long sleeved leotard with stretch tulle covering the arms to the back waist and a drop shaped cutout on the back closed with a small button. Full front lining. Microfiber - Printed Stretch Tulle



BLACK  
GOLD







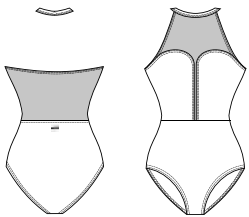
# OSIRIS

Ladies : XS - S - M - L

High neck leotard with backless collar closed by two buttons on neck. Black flocked pattern laying on a nude background on high chest and low-mid back ending at the waist. Full front lining. Microfiber - Flocked Stretch Tulle



BLACK  
BEIGE



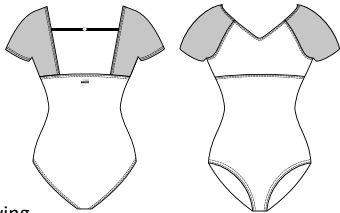
# ADENIA

Ladies : XS - S - M - L

Short sleeve leotard with black flocked pattern laying on a nude background on sleeves leading to back waist. Traverse strap with small button on back. Full front lining. Microfiber - Flocked Stretch Tulle



BLACK  
BEIGE



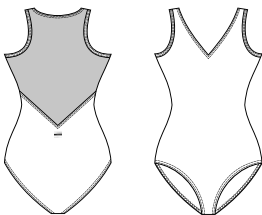
# ATON

Ladies : XS - S - M - L

Medium strap leotard with V-neckline with horizontal transparent mesh stripes meeting the waistline. Full front lining. Microfiber - Striped Microfiber



BLACK



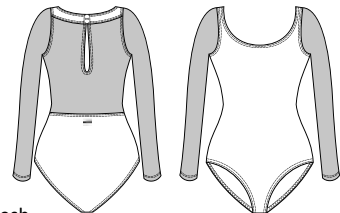
# ISIS

Ladies : XS - S - M - L

Long sleeved leotard with horizontal transparent mesh stripes on sleeves leading to back with two buttons closing drop-shaped opening on back of leotard, and microfiber pattern lining on trim. Full front lining. Microfiber - Striped Microfiber



BLACK



## OSIRIS

Bold, dreamy, cheeky, innovative or elegant, the Osiris leotard can be called in many different ways. With its open-back, its high neck, and its deep cleavage covered with flocked stretch tulle, be sure that this leotard is for you!



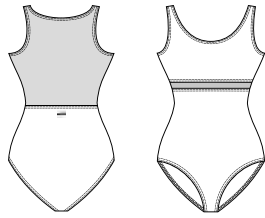




# KAITO

Ladies : XS - S - M - L

Medium strapped leotard with a wide neckline, underlined with a chest strap featuring square mesh cutouts that lead to the back and into the waist. Top front and bottom lined. Microfiber - Openwork Microfiber



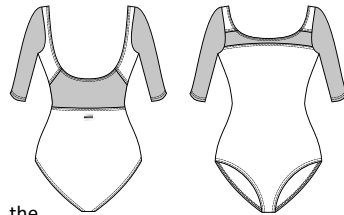
BLACK



# AMANDE

Ladies : XS - S - M - L

3/4 sleeved leotard with square mesh cutouts on the sleeves that lead into back and waistline. Full front lining. Microfiber - Openwork Microfiber



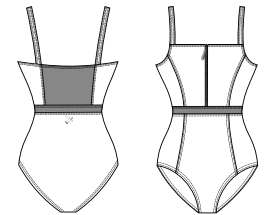
BLACK



# ATLANTE

Ladies : XS - S - M - L

Plain tank leotard with a zipped front and an integrated belt made of printed fabric on the waistline and back. Full front lining. Microfiber - Printed Microfiber



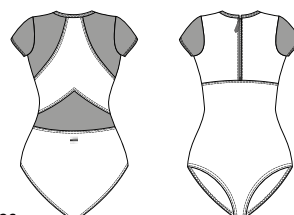
BLACK  
NIGHTBLUE



# HELIX

Ladies : XS - S - M - L

Short sleeved leotard with printed microfiber on sleeves and the back. High round neckline and a zipped front. Full front lining. Microfiber - Printed Microfiber



BLACK  
NIGHTBLUE

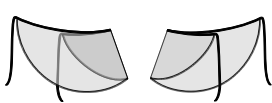


KAITO P.44 - OMEGA P.99





# ALEGRO



**Children : 4/8 - 8/12**  
**Ladies : XS/S - M/L - XL/XXL\*\***

\*\* Available in black only  
Sheer four-way stretch tulle wrap skirt, featuring a stretch waistband and beautiful hem. Ideal for uniforms. Stretch Tulle

WHITE

PEACH

PINK

LILAC

PACIFIC

MINT

SKY

LIGHT GREY

DARK GREY

FUSHIA

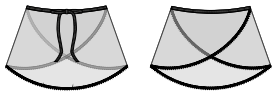
BURGUNDY

NAVY

BLACK



# DOLLY



**Children : 4/8 - 8/12**  
**Ladies : XS/S - M/L**

This classic length faux wrap skirt is made from four-way stretch mesh with exclusive Wear Moi hem. Stretch Tulle

WHITE

PINK

LILAC

PACIFIC

MINT

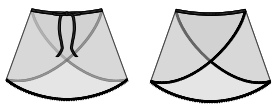
FUSHIA

NAVY

BLACK



# DELIA



**Children : 4/8 - 8/12**  
**Ladies : XS/S - M/L**

A longer style faux wrap skirt. Beautiful four-way stretch mesh and signature Wear Moi hem. Stretch Tulle

WHITE

PINK

LILAC

PACIFIC

FUSHIA

BURGUNDY

NAVY

BLACK



# DAPHNE



**Children : 4/8 - 8/12**  
**Ladies : XS/S - M/L**

\* Not available in sizes 4/8  
Sheer four-way stretch tulle pull on skirt features a color-matched elastic waistband. Length of the skirt depends on size. Stretch Tulle

WHITE

PEACH

PINK

LILAC

PACIFIC

MINT

SKY

LIGHT GREY

DARK GREY

ROSE

FUSHIA

FRENCH BLUE

ROYAL BLUE

BURGUNDY

PURPLE

FOREST GREEN

NAVY

BLACK



# MAGDA



**Children : 4/8 - 8/12**  
**Ladies : XS/S - M/L**

\* Not available in sizes 4/8  
A 6cm addition to our most popular skirt, Daphne, makes this four-way stretch mesh pull on skirt a must have. Stretch Tulle

WHITE

PINK

LILAC

PACIFIC

DARK GREY

FUSHIA

FRENCH BLUE

BURGUNDY

PURPLE

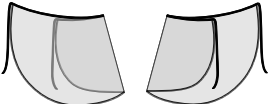
FOREST GREEN

NAVY

BLACK



# APOLO



**Ladies : XS/S - M/L**

A long wrap skirt for ladies, constructed of beautiful four-way stretch mesh and a flexible waist band. Perfect for adults and teachers. Stretch Tulle

BLACK



# ABELIA



**Children : 4/8 - 8/12**  
**Ladies : XS/S - M/L**

Elasticated waist skirt entirely composed of floral motifs printed on a stretch veil playing transparency with thin opaque stripes. Veil Striped Stretch Printed

PEACH

PINK

LILAC

PACIFIC

BLACK



# NATICE



**Ladies : XS/S - M/L**

Fancy microfiber skirt with an elasticated finish at waist. Printed Microfiber

BLACK

NIGHT BLUE





# OCADIA

Ladies : XS/S - M/L

Fancy tulle skirt with an elastic finish at the waist.  
Printed Stretch Tulle



BLACK  
RED



NEW

# TINA

Children : 4/8 - 8/12  
Ladies : XS/S - M/L

Short skirt in fancy sheer stretch tulle with flocked flower-pattern. Black microfiber elastic waist, detailed with a small bow in the middle of the back.  
Microfiber - Flocked Stretch Tulle



# AMBER

Ladies : XS/S - M/L

Fancy tulle skirt with small printed flowers and an elastic finish at the waist.  
Printed Stretch Tulle



BLACK  
GOLD

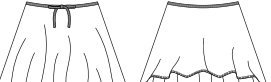


NEW

# DRYADES

Ladies : XS/S - M/L

Medium-length skirt in fancy sheer stretch tulle with flocked flower-pattern. Black microfiber elastic waist, detailed with a small bow in the middle of the back.  
Microfiber - Flocked Stretch Tulle



# LUMA

Ladies : XS/S - M/L

Fancy microfiber skirt with an elasticated finish at the waist.  
Printed Microfiber



BLACK  
RASPBERRY



NEW

# FENRIS

Ladies : XS/S - M/L

Fancy short skirt in microfiber embossed with flocked tiny flower pattern and elastic waist.  
Flocked Microfiber



NIGHTBLUE  
BLACK



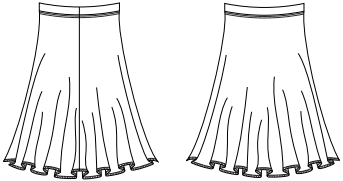
# FADO

Children : 8/10 - 10/12  
Ladies : XS/S - M/L

Below the knee character skirt. Soft microfiber full circle skirt with an elastic waistband.  
Microfiber



BLACK



NEW

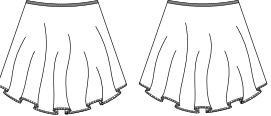
# DIONYSOS

Ladies : XS/S - M/L

Medium length skirt, short in the front and long in the back. Embossed flocked tiny flower pattern microfiber with elastic waist.  
Flocked Microfiber



NIGHTBLUE  
BLACK







DIV 97

Bun cover with faux rhinestones. High quality materials and secure elastic. Polythylene - Acrylic stone



DIV 42

One Size - Microfiber scrunchies match all Wear Moi colors perfectly. Microfiber.



DIV 98

Mini pearl bun cover. Secure elastic and high quality materials. An ideal gift for any cute ballerina. Polythylene - Acrylic stone



# ACCESSORIES



NEW DIV 116

One Size - Printed Microfiber scrunchies



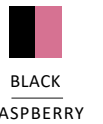
NEW DIV 113

One Size - Printed Microfiber scrunchies



NEW DIV 112

One Size - Printed Microfiber scrunchies



NEW DIV 111

One Size - Scrunchies of floral motifs printed on a stretch veil playing transparency with thin opaque stripes. Printed Stretch Stripes Veil



NEW DIV 108

One Size - Stretch Lace scrunchies



NEW DIV 110

One Size - Flocked Stretch Tulle scrunchies



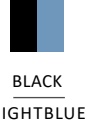
NEW DIV 114

One Size - Printed Microfiber scrunchies



NEW DIV 109

One Size - Printed Microfiber scrunchies



NEW DIV 115

One Size - Flocked Microfiber scrunchies





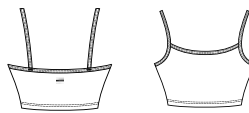
# ACTIVE WEAR



## IKITA

**Children : 4/6 - 6/8 - 8/10 - 10/12**  
**Ladies : XS - S - M - L**

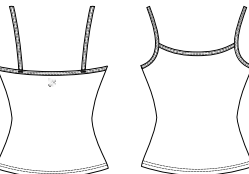
Simple, elegant, classic short camisole top with comfortable waistband and front lining. Microfiber



## ANA

**Children : 4/6 - 6/8 - 8/10 - 10/12**  
**Ladies : XS - S - M - L**

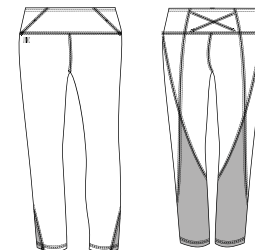
Simple, soft, microfiber camisole. This full length top is front lined. Microfiber



## BELINDA

**Children : 6/8 - 8/10 - 10/12**  
**Ladies : XS - S - M - L - XL**

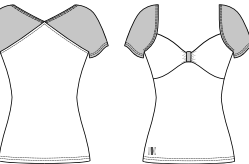
These black leggings with mesh side panels are perfect for your street to studio look. Featuring a slim fit, four-way stretch and shape retention. Microfiber - Stretch Tulle



## BOUNTY

**Ladies : XS - S - M - L - XL**

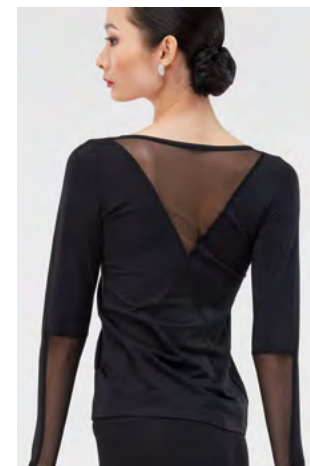
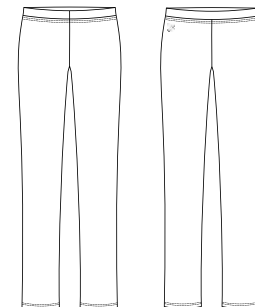
Short-sleeve athletic shirt, with mesh detail and a sweetheart neck-line. Microfiber - Stretch Tulle



## IRIS

**Children : 4/6 - 6/8 - 8/10 - 10/12**  
**Ladies : XS - S - M - L**

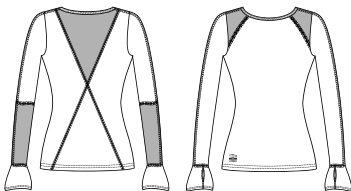
Classic U-cut jazz pants. Comfortable elastic waist band and soft microfiber. Microfiber



## AREZZA

**Ladies : XS - S - M - L - XL**

The Arezza is a classic long-sleeve athletic shirt, with mesh detail and a sweetheart neck-line perfect pairing with your Belinda leggings. Microfiber - Stretch Tulle





# UNDERWEAR



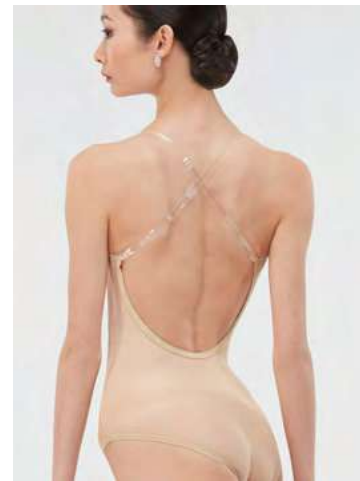
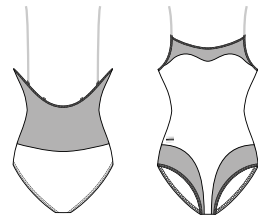
## COREA

**Ladies : XS - S - M - L**

Camisole undergarment leotard features adjustable silicone straps with four attachment points on the back for multiple styling options. Sheer panels on the back, at the neckline, and along the leg line, offer coverage while blending with skin tone for less visibility beneath costumes and rehearsal dancewear. Cotton-lined gusset. Soft Microfiber - Stretch Tulle



BEIGE



## AZTEC

**Children : 8/10 - 10/12**  
**Ladies : XS - S - M - L**

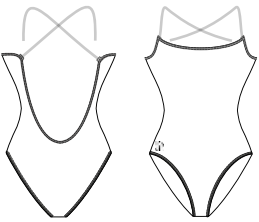
Un-lined camisole undergarment, designed to provide additional coverage and support. Equipped with clear, detachable straps. Cotton-lined gusset. Soft Microfiber



BEIGE



WALNUT



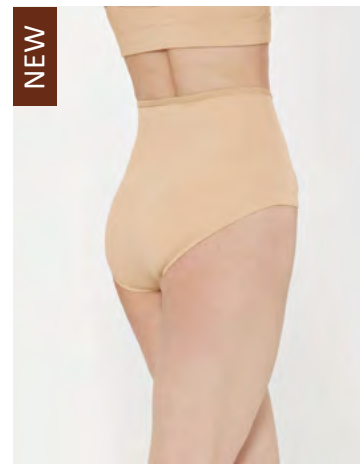
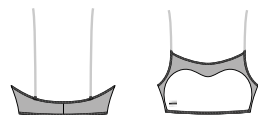
## AKIRA

**Ladies : XS - S - M - L**

Dance bra, featuring stretch mesh detail, and clear convertible straps. Soft Microfiber - Stretch Tulle



BEIGE



## ADELA

**Children : 8/10 - 10/12 - 12/14**  
**Ladies : XS - S - M - L**

Comfortable high-waisted brief with soft elastic at the waist and elastic finishes on the thighs. Cotton-lined gusset. Soft Microfiber



BEIGE



## AELIS

**Ladies : XS - S - M - L**

Comfortable thong for dancers, thin four-way stretch mesh and soft microfiber help this undergarment disappear under any leotard or costume piece. Cotton-lined gusset. Soft Microfiber - Stretch Tulle



BEIGE



## ANDESITE

**Children : 8/10 - 10/12**  
**Ladies : XS - S - M - L**

Basic microfiber short undergarment, offering a gusset for maximum flexibility. Soft Microfiber



BEIGE



WALNUT







# DIV O1

Footed matte semi-opaque ballet tights, with soft, comfortable Microfiber Lycra waist band, and color-matched gusset (gusset is excluded in black). Super-stretchy, our ballet tights' construction offers unrivalled fit and performance. It holds shapes and washes well without shrinking or fading. Perfect for class, rehearsal and performance.

Microfiber

**Children : 4/6 - 6/8 - 8/10 - 10/12**

**Ladies : XS - S - M - L**



# TIGHTS





## DIV O3

Convertible matte semi-opaque ballet tights, with soft comfortable Microfiber Lycra waist band, and color-matched gusset. Super-stretchy, the construction of our ballet tights offers unrivalled fit and performance. It holds shapes and washes well, without shrinking or fading. Perfect for class, rehearsal and performance.

Microfiber

**Children : 4/8 - 8/12 - 12/14**  
**Ladies : S/M - L/XL**



## DIV 60

Footless matte semi-opaque ballet tights, with soft comfortable Microfiber Lycra waist band and color-matched gusset (gusset is excluded in black). Super-stretchy, the construction of our ballet tights offers unrivalled fit and performance. It holds shapes and washes well, without shrinking or fading. Perfect for class, rehearsal and performance.

Microfiber

**Children : 6/8 - 8/10 - 10/12**  
**Ladies : XS - S - M - L**







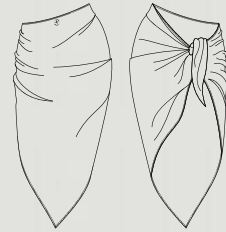
# WARM UPS

## RUNES

**T.U.**

Fancy heather knitted acrylic wool shawl.  
Wear on the shoulders to keep you warm  
or tie at the waist like a wrap skirt.  
Knitted Cotton Acrylic mixed yard 2 colors

  
SALMON  
IVORY



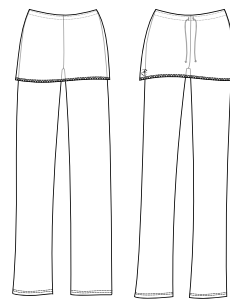
## JURKA

**Children : 6/8 - 8/10 - 10/12**

**Ladies : XS - S - M - L**

Straight cut pants in fancy heather knitted acrylic wool.  
Tightens at the waist with a drawstring and folds up at the  
hips to form a skirt flap.  
Knitted Cotton Acrylic mixed yard 2 colors

  
SALMON  
IVORY

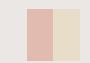


## LEVANA

**Children : 6/8 - 8/10 - 10/12**

**Ladies : XS - S - M - L**

Long sleeve wrap-over top in fancy heather knitted  
acrylic wool, finished with a solid border on the  
bust and tied at the back or side.  
Knitted Cotton Acrylic mixed yard 2 colors

  
SALMON  
IVORY



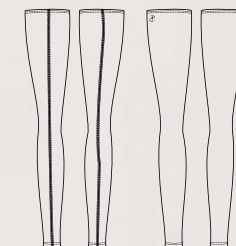
## LOUKI

**Children : 8/12**

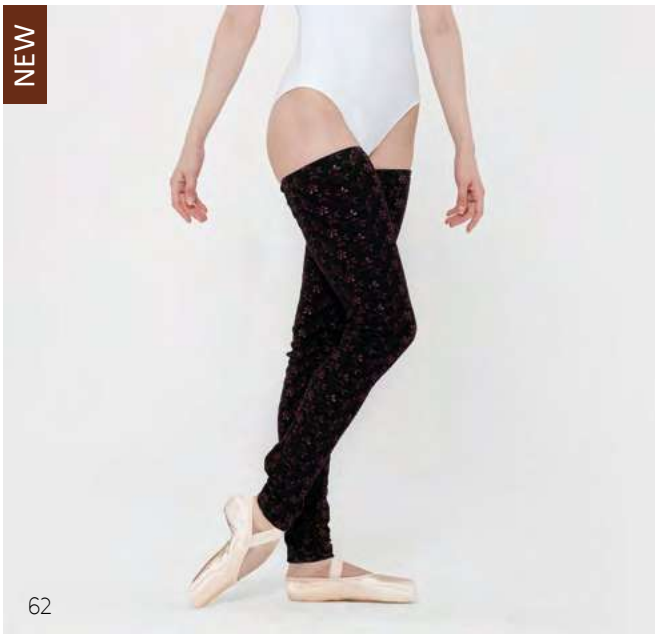
**Ladies : XS/S - M/L**

Long gaiters in fancy knitted acrylic wool, fitted  
cut, comfortable and elasticized for support.  
Knitted Cotton Acrylic mixed yard 2 colors

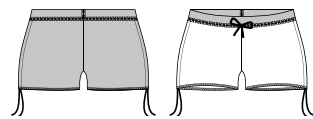
  
SALMON  
IVORY







# SELENE



**Ladies : XS - S - M - L**

Ultra soft, comfortable shorts. Embroidered wool on the front and plain wool on the back. Small decorative bow on the elastic waistband with drawstring gather.  
Knitted Acrylic Elasthan - Embroidered Knitted Cotton Acrylic



BLACK  
BURGUNDY

# ROSEA



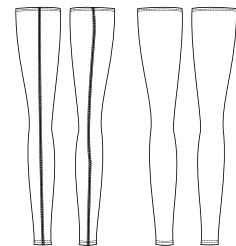
**Ladies : XS - S - M - L**

Short sleeve comfortable cropped top with embroidered wool front band, back, and cuffs, highlighted by a beautiful wide scoop neckline. Plain wool top front yokes, sleeves, and bottom edge.  
Knitted Acrylic Elasthan - Embroidered Knitted Cotton Acrylic



BLACK  
BURGUNDY

# LADO



**Ladies : XS/S - M/L**

Long gaiters in fancy embroidered wool, fitted cut, comfortable and elasticized for support.  
Embroidered Knitted Cotton Acrylic



BLACK  
BURGUNDY

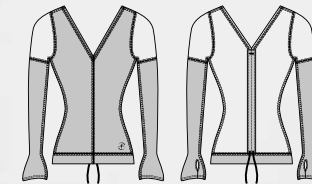
# VOLUPTÉ

**Ladies : XS - S - M - L**

Ultra soft, comfortable sweater. Embroidered on the front and tops of the sleeves. The back and cuffs are in plain wool with long sleeves and mitten finishes. Small drawstrings gather at the middle front.  
Knitted Acrylic Elasthan - Embroidered Knitted Cotton Acrylic



BLACK  
BURGUNDY







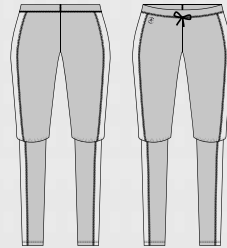
# JALENDRA

**Ladies : XS - S - M - L**

Ultra soft and comfortable wool pants, embroidered on the sides with plain wool on the front and back. Small bow detail on the elastic waistband.  
Knitted Acrylic Elasthan - Embroidered Knitted Cotton Acrylic



BLACK  
BURGUNDY



NEW

JALENDRA P.64 - DIANE P.5 - OMEGA P.99



NEW



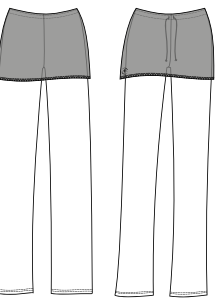
# SKADA

**Ladies : XS - S - M - L**

Straight cut wool pants embroidered on the legs with plain wool skirt flap, tightened by a string at the waist.  
Knitted Acrylic Elasthan - Embroidered Knitted Cotton Acrylic



BLACK  
BURGUNDY



NEW



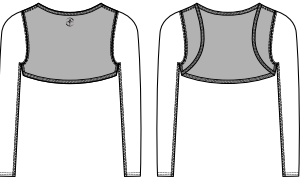
# RAVANA

**Ladies : XS - S - M - L**

Ultra soft and comfortable long sleeve wool shoulder warmer, embroidered on the sleeves with plain wool on the front and back.  
Knitted Acrylic Elasthan - Embroidered Knitted Cotton Acrylic



BLACK  
BURGUNDY



NEW



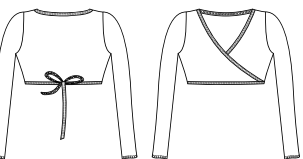
# BAIVA

**Ladies : XS - S - M - L**

Short cropped long sleeve wrap-over top in fancy embroidered wool, cut just under the bustline. Can be tied at the back or side.  
Embroidered Knitted Cotton Acrylic



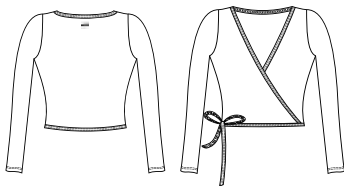
BLACK  
BURGUNDY







# HEVEA



**Ladies : XS - S - M - L**

Long sleeved knitted cardigan with a fancy printed pattern. Embroidered logo under the back neckline.  
Printed Stretch Knitted Cotton Acrylic



# AENOS

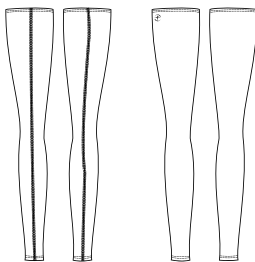


**Ladies : XS - S - M - L**

Ultra soft and comfortable elastic waist knitted shorts with a fancy printed pattern.  
Printed Stretch Knitted Cotton Acrylic



# ARAS



**Ladies : XS/S - M/L**

Long knitted legwarmers with a fancy printed pattern, comfortable and stretchy fit on the legs for good support to wear.  
Printed Stretch Knitted Cotton Acrylic



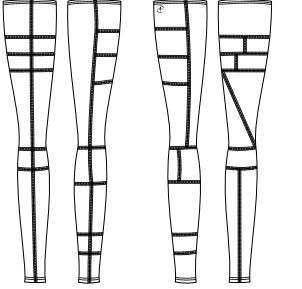
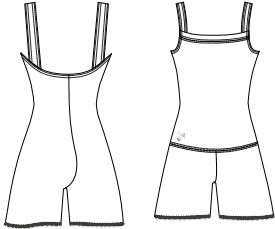




# ALOES

**Children : 8/10 - 10/12**  
**Ladies : XS - S - M - L**

Our knitted romper is a versatile garment that can also be rolled down to the waist and worn as shorts.  
Knitted Acrylic Elasthan



# SUPERBE

**Children : 8/12**  
**Ladies : XS/S - M/L**

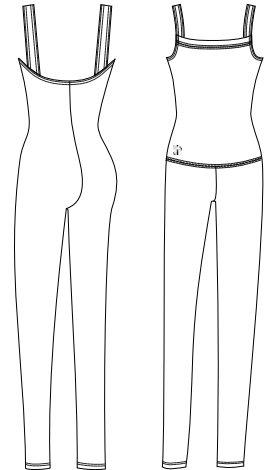
Eye-catching patchwork design that offers extreme comfort. These leg warmers are sure to become a favorite.  
Knitted Acrylic Elasthan



# CAPELLA

**Children : 8/10 - 10/12**  
**Ladies : XS - S - M - L**

This warm up knit ankle length romper will keep you warm and comfortable in dance class.  
Knitted Acrylic Elasthan



# TULIPE

**Children : 8/10 - 10/12**  
**Ladies : XS - S - M - L**

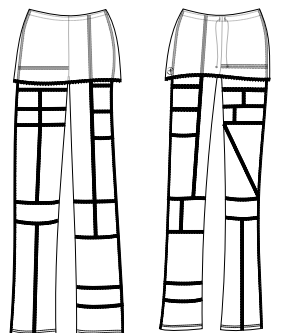
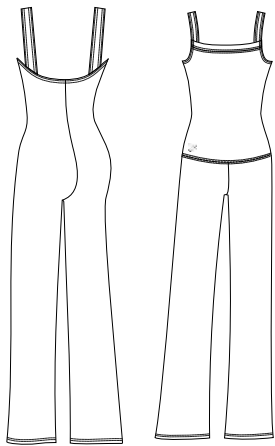
Stylish stretch knit crop-top featuring comfortable patchwork design and scoop neckline.  
Knitted Acrylic Elasthan



# CALOU

**Children : 8/10 - 10/12**  
**Ladies : XS - S - M - L**

Our knit boot-leg pant romper is a perfect addition to your class apparel.  
Knitted Acrylic Elasthan



# SYRMA

**Children : 8/10 - 10/12**  
**Ladies : XS - S - M - L**

Eye-catching patchwork design that offers extreme comfort and stretch. These fold-over boot-cut pants are perfect from street to studio.  
Knitted Acrylic Elasthan



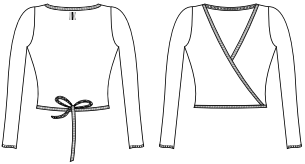
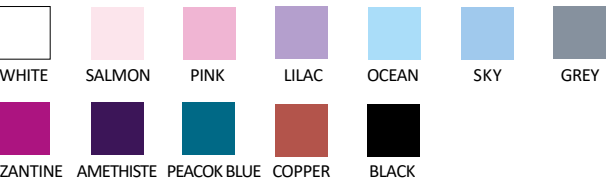




# CARMEN

**Children : 4/6 - 6/8 - 8/10 - 10/12**  
**Ladies : XS - S - M - L - XL\*\* - XXL\*\***

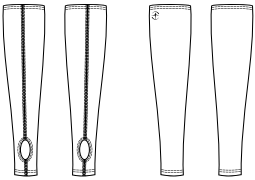
\*\* Available in black only  
This wrap sweater is an incredibly comfortable yet chic garment that creates a classic look.  
Knitted Acrylic Elasthan



# IZALIA

**Children : 8/12**  
**Ladies : XS/S - M/L**

Short stirrup leg warmers.  
Knitted Acrylic Elasthan



# NAYA

**Children : 8/10 - 10/12**  
**Ladies : XS - S - M - L**

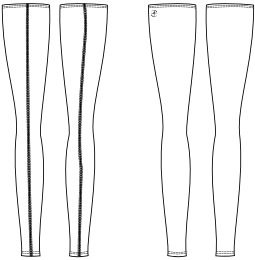
Short sleeve crop top sweater with an eye-catching design and comfortable cut.  
Knitted Acrylic Elasthan



# CRISTAL

**Children : 8/12**  
**Ladies : XS/S - M/L**

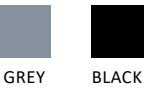
Full length skinny fit leg warmers. Soft and comfortable. Knitted Acrylic Elasthan



# CEYLAN

**Children : 8/10 - 10/12**  
**Ladies : XS - S - M - L**

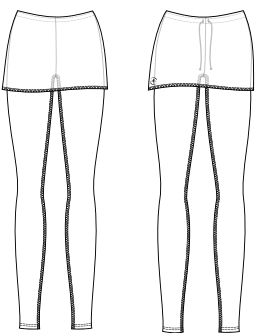
Acrylic warm-up shorts. Elastic on the waist for a secure fit.  
Knitted Acrylic Elasthan



# CRY&SALIDE

**Children : 8/10 - 10/12**  
**Ladies : XS - S - M - L**

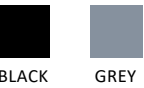
A unique and flattering sweater waistband folds over these warm tights with a drawstring waist.  
Knitted Acrylic Elasthan



# TIARA

**Children : 8/10 - 10/12**  
**Ladies : XS - S - M - L**

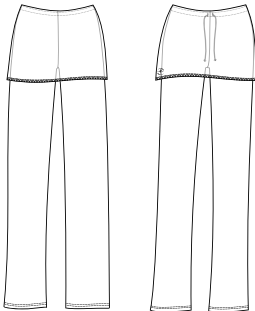
Gorgeous, warm and comfortable fold over shorts including a waist drawstring with a rolled hem.  
Knitted Acrylic Elasthan



# UTAMI

**Children : 8/10 - 10/12**  
**Ladies : XS - S - M - L**

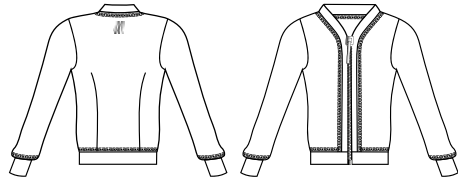
These warm up pants feature a boot cut style with a fold over waistband.  
Knitted Acrylic Elasthan







# ILIADÉ



**Children : 6/8 - 8/10 - 10/12**

**Ladies : XS - S - M - L**

Ladies cut four-way stretch warm-up jacket with a front zip and double dart seams. This jacket is perfect for staying warm between rehearsals, or for use as a team uniform warm-up. Pair with Opus pants for a complete look. Double Viscose Elasthan Jersey

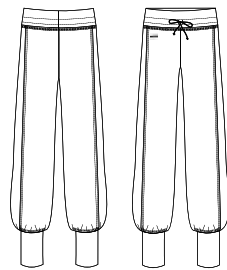


NAVY



BLACK

# OPUS



**Children : 6/8 - 8/10 - 10/12**

**Ladies : XS - S - M - L**

Four-way stretch warm-up pants with fitted ankle and a drawstring for secure fit. Perfect for a dancer that wants to stay warm or can be used as a team uniform warm-up. Pair with Iliade jacket for a complete look. Double Viscose Elasthan Jersey

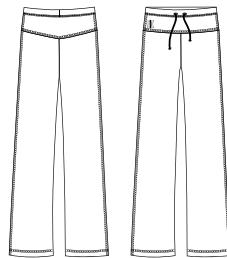


NAVY



BLACK

# PENELOPE



**Children : 6/8 - 8/10 - 10/12**

**Ladies : XS - S - M - L**

Warm-up pants with elastic waist band and drawstring. Wide leg for a more relaxed and comfortable fit. Double Viscose Elasthan Jersey

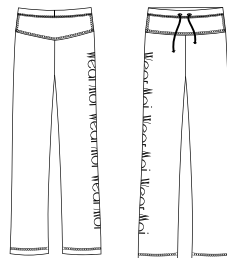


NAVY



BLACK

# PALOMINO



**Ladies : XS - S - M - L**

Straight cut pants with front and back hip yokes, wide elastic waistband, and a drawstring waist for greater comfort. Topstitched hem finish at the bottom and silkscreen print on the entire side of the right leg. Double Viscose Elasthan Jersey



BLACK

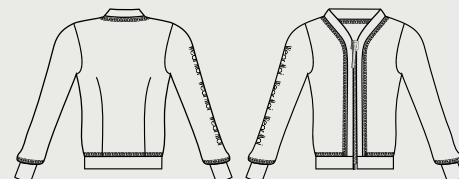
# PATIENCE

**Ladies : XS - S - M - L**

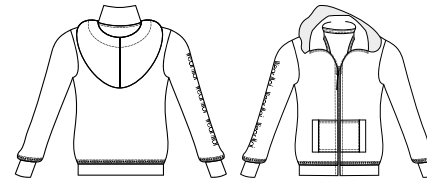
Fitted jacket with zippered front, embellished with silver serigraphy on the right arm. Unlined. Double Viscose Elasthan Jersey



BLACK



# PIVOINE



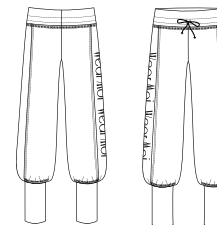
**Ladies : XS - S - M - L**

Soft hooded jacket with front zipper, embellished with a silkscreen print on the right arm and patch pockets on the lower center front. Unlined. Double Viscose Elasthan Jersey



BLACK

# PANDORE



**Ladies : XS - S - M - L**

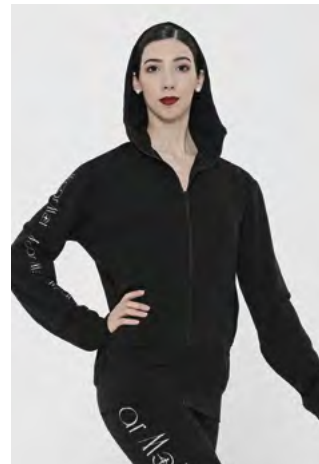
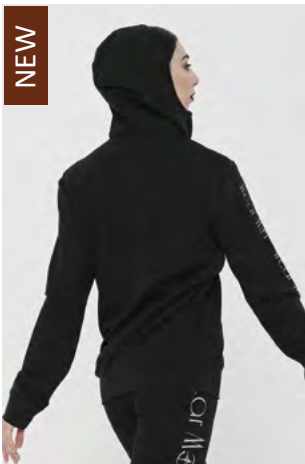
Wide jogging pants tightened at the ankles, finished with a lapel band at the waist, crossed by a drawstring, with silkscreen print centered on the right leg. Double Viscose Elasthan Jersey



BLACK

NEW

NEW





# MEN







# OCTAVE

**Children : 4/6 - 6/8 - 8/10 - 10/12 - 12/14**  
**Men : XS - S - M - L**

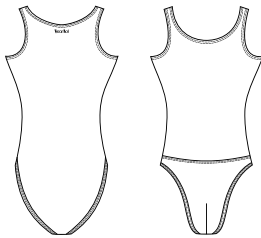
Microfiber basic men's full tank leotard with attached full seat dance belt.  
Microfiber



WHITE



BLACK



NEW

# OBERON

**Children : 6/8 - 8/10 - 10/12 - 12/14**  
**Men : XS - S - M - L - XL**

Short sleeve leotard with zippered front mock turtleneck and built in dancebelt with thong back.  
Microfiber



WHITE



LIGHT GREY



DARK GREY



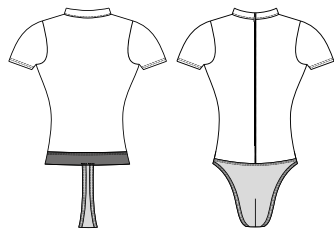
NAVY



BURGUNDY



BLACK



# IGOR

**Children : 4/6 - 6/8 - 8/10 - 10/12 - 12/14**  
**Men : XS - S - M - L**

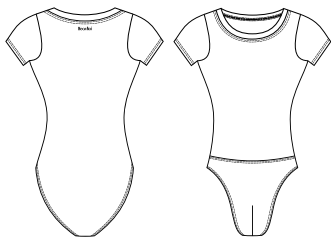
Wide neck men's leotard with cap sleeves. Full seat bottom without front padding.  
Microfiber



WHITE



BLACK



NEW

# JASON

**Children : 6/8 - 8/10 - 10/12 - 12/14**  
**Men : XS - S - M - L - XL**

Short sleeve leotard with wide front and back scoop neck and built in dancebelt with thong back.  
Microfiber



WHITE



LIGHT GREY



DARK GREY



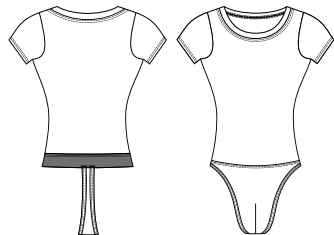
NAVY



BURGUNDY



BLACK



# ALTAN

**Children : 4/6 - 6/8 - 8/10 - 10/12**  
**Men : XS - S - M - L**

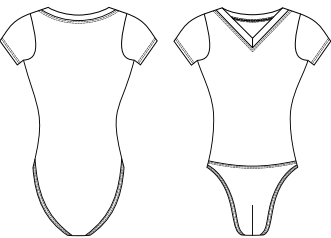
Men's full seat leotard. V-front cotton shirt, attached front padded full seat dance belt.  
Cotton Elasthan



WHITE



BLACK



# VERSAO

**Children : 6/8 - 8/10 - 10/12 - 12/14**  
**Men : XS - S - M - L**

Microfiber basic men's full tank leotard with attached thong back dance belt.  
Microfiber



WHITE



LIGHT GREY



DARK GREY



BURGUNDY



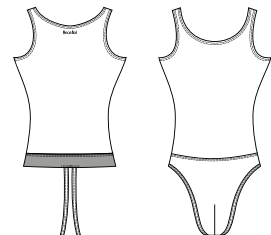
ROYAL BLUE



NAVY



BLACK



# IVAN

**Children : 6/8 - 8/10 - 10/12**  
**Men : XS - S - M - L - XL**

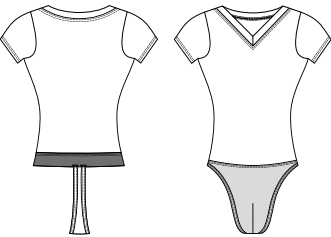
Short sleeve V-neck cotton leotard features a built in fully front padded dance belt with thong back. An ideal uniform piece for all ages.  
Cotton Elasthan



WHITE



BLACK



# HORACIO

**Children : 6/8 - 8/10 - 10/12 - 12/14**  
**Men : XS - S - M - L - XL**

One of the most requested items, full microfiber shirt and attached microfiber dance belt combination. An ideal uniform piece for all ages, perfect for class and stage.  
Microfiber



WHITE



LIGHT GREY



DARK GREY



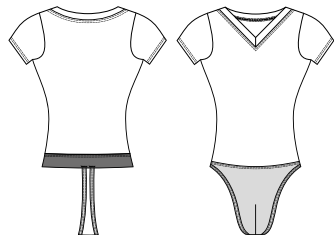
BURGUNDY



NAVY



BLACK







# CONDOR

**Children : 6/8 - 8/10 - 10/12**

**Men : XS - S - M - L - XL**

Perfect for ballroom and ballet, this short sleeve mock turtleneck leotard with functional low zip front features a built-in fully padded dance belt with a thong back.

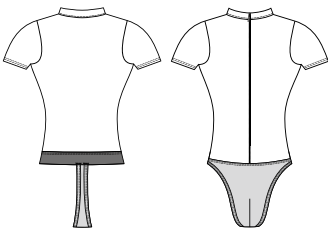
Cotton Elasthan



WHITE



BLACK



# DANCE BELT NARROW

**Children : 8/10 - 10/12 - 12/14**

**Men : XS - S - M - L - XL**

Cotton elastane fully padded dance belt features a thong back and 4cm soft touch elastic for comfort. Runs true to size.

Cotton Elasthan



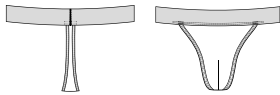
DARK BEIGE



WALNUT



BLACK



# ALPIN

**Children : 6/8 - 8/10 - 10/12 - 12/14**

**Men : XS - S - M - L - XL**

Raglan sleeves scoop neckline t-shirt, fits tight and close to the body.

Microfiber



WHITE



LIGHT GREY



DARK GREY



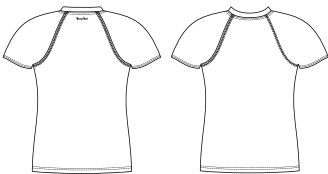
NAVY



BURGUNDY



BLACK



# DANCE BELT WIDE

**Men : XS - S - M - L - XL**

Cotton elastane fully padded dance belt features a thong back and 7,2cm soft touch elastic for comfort. Runs true to size.

Cotton Elasthan



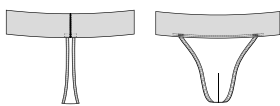
DARK BEIGE



WALNUT



BLACK



# CONRAD

**Children : 4/6 - 6/8 - 8/10 - 10/12 - 12/14**

**Men : XS - S - M - L**

An ideal uniform staple, this crewneck cap sleeve men microfiber shirt is anything but basic.

Microfiber



WHITE



LIGHT GREY



DARK GREY



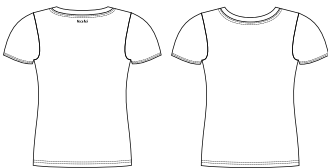
BURGUNDY



NAVY



BLACK



# DANCE BELT EXTRA WIDE

**Men : XS - S - M - L - XL**

Cotton elastane fully padded dance belt featuring a thong back and 12,5cm comfortable extra-wide elastic for added support.

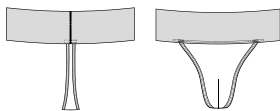
Cotton Elasthan



DARK BEIGE



BLACK



# HAXO

**Children : 4/6 - 6/8 - 8/10 - 10/12 - 12/14**

**Men : XS - S - M - L - XL**

This soft microfiber, short sleeve, V-neck T-shirt is classic and exceptionally comfortable.

Microfiber



WHITE



LIGHT GREY



DARK GREY



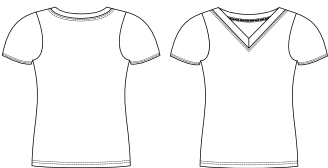
NAVY



BURGUNDY



BLACK



# DANCE BELT FULL SEAT

**Children : 4/6 - 6/8 - 8/10 - 10/12 - 12/14**

**Men : XS - S - M - L - XL**

Boys/Men's full back dance belt. Features 4cm elastic waistband, contoured front shaped to the male anatomy and full front padding.

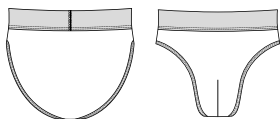
Cotton Elasthan



DARK BEIGE



WALNUT







# SOLO

**Children : 4/6 - 6/8 - 8/10 - 10/12**

**Men : XS - S - M - L - XL**

Heavyweight men footed tights with a ballet-style high waist.  
Cotton Elasthan

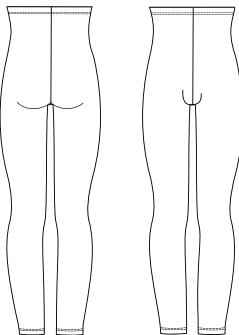


# ALBAN

**Children : 4/6 - 6/8 - 8/10 - 10/12**

**Men : XS - S - M - L - XL**

Men's microfiber footless tights with reinforced inseam gusset.  
Microfiber

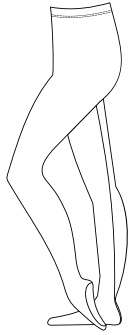


# ORION

**Children : 4/6 - 6/8 - 8/10 - 10/12**

**Men : XS - S - M - L - XL**

Heavy weight microfiber men's footed tights and a ballet waist.  
Microfiber



# HIDALGO

**Children : 10/12**

**Men : XS - S - M - L - XL**

These convertible tights for men are the perfect answer to a male dancer's needs. A comfortable opening under the arch and not across the foot, helps to stay comfortable and not have any seams under the foot.  
Microfiber



IVAN P.76 - ORION P.80

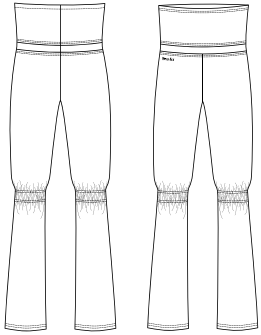




# SACHA

Men : XS - S - M - L

Four-way stretch elastic pants with high waist for additional support. Tapered to the knee with a flair cut for a traditional jazz silhouette. Microfiber



BLACK

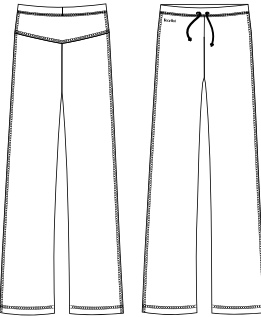


# PRESTON

Children : 6/8 - 8/10 - 10/12

Men : XS - S - M - L

Men's warm-up pants with elastic waist band and drawstring. Wide leg for a more relaxed and comfortable fit. Double Viscose Elasthan Jersey



NAVY



BLACK

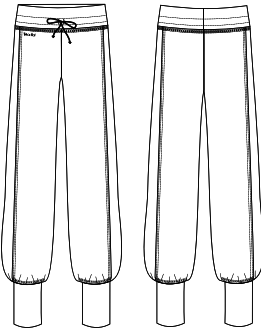


# BELEM

Children : 6/8 - 8/10 - 10/12

Men : XS - S - M - L

Men's cut four-way stretch warm-up pants with fitted ankles and a drawstring for secure fit. Perfect for a dancer that wants to stay warm as well as travel uniform for your team or school. Pair with Malone jacket for a complete look. Double Viscose Elasthan Jersey



NAVY



BLACK

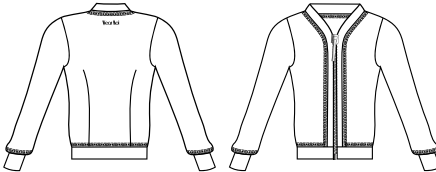


# MALONE

Children : 6/8 - 8/10 - 10/12

Men : XS - S - M - L

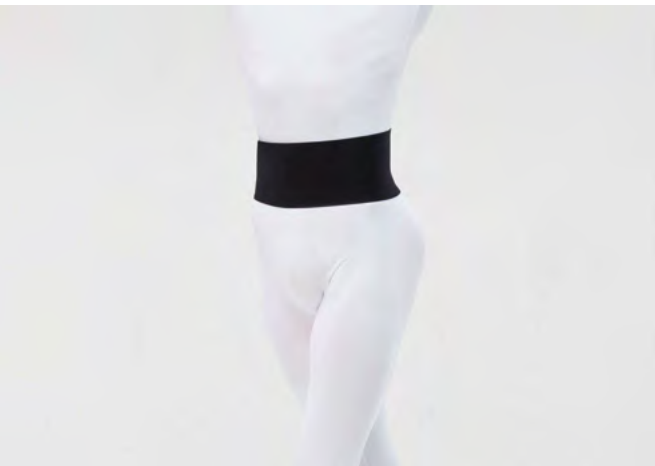
Men's cut four-way stretch warm jacket with a front zip and double dart seams. Perfect for a dancer that wants to stay warm or can be used as a team uniform warm-up. Pair with Belem pants for a complete look. Double Viscose Elasthan Jersey



NAVY



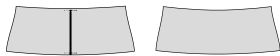
BLACK



# ALCYONE

Men : XS - S - M - L

Men's wide elastic 12,50cm waistband. Offering effortless support and a fitted silhouette. Elastic Elasthan



BLACK



DARK BEIGE

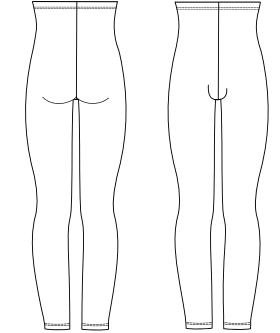


# HAMADA

Children : 4/6 - 6/8 - 8/10 - 10/12

Men : XS - S - M - L - XL

This heavyweight footless tight for men features a ballet style high waist that can be rolled down, or worn with suspenders for class or performance. Cotton Elasthan



WHITE



GREY



BLACK



# CLOVIS

Children : 4/6 - 6/8 - 8/10 - 10/12

Men : XS - S - M - L

These convertible tights for men are the perfect answer to a male dancer's needs. A comfortable opening under the arch and not across the foot, helps to stay comfortable and not have any seams under the foot. Cotton Elasthan



WHITE



GREY



BLACK

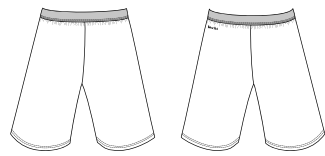




PACO P.85



# LORCA



**Children : 4/6 - 6/8 - 8/10 - 10/12**

**Men : XS - S - M - L**

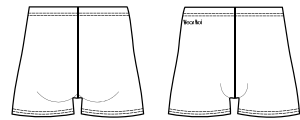
Men's athletic short with a thin waistband, loose fit and maximum flexibility.  
Microfiber



BLACK



# MARCEAU



**Children : 6/8 - 8/10 - 10/12**

**Men : XS - S - M - L**

Basic men's fitted dance short with four-way stretch.  
Microfiber



BEIGE



LIGHT GREY



DARK GREY



BURGUNDY



WALNUT



ROYAL BLUE



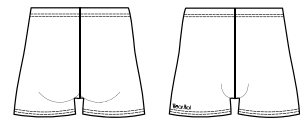
NAVY



BLACK



# PACO



**Children : 6/8 - 8/10 - 10/12**

**Men : XS - S - M - L**

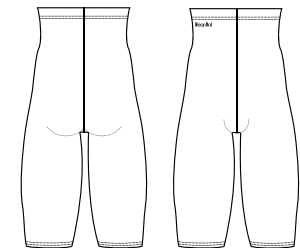
Men's leg cut, cotton shorter length shorts that include a comfortable elastic waistband.  
Cotton Elasthan



BLACK



# ODEON



**Children : 4/6 - 6/8 - 8/10 - 10/12**

**Men : XS - S - M - L**

This men's microfiber over-the-knee dance pants is a perfect uniform option. Reinforced inseam gusset and secure waist elastic.  
Microfiber



LIGHT GREY



DARK GREY



BURGUNDY



ROYAL BLUE



NAVY



BLACK



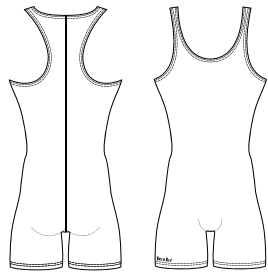


# TANGO

**Children : 8/10 - 10/12**

**Men : XS - S - M - L**

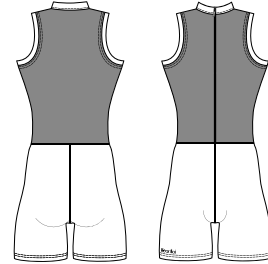
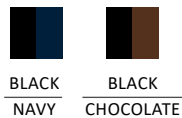
This men's microfiber, racerback, tank, biketard with men's leg cut features shorter leg length and is great fitting for men.  
Microfiber



# CAPRI

**Men : XS - S - M - L**

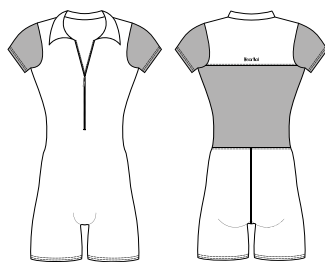
Men's mock turtleneck, sleeveless biketard featuring a soft front zipper edging detail and a men's leg cut.  
Microfiber



# ROMEO

**Men : XS - S - M - L**

This unique men's fashion unitard incorporates the perfect blend of microfiber and four-way stretch mesh sleeves and back panel. Polo collar with front zip. No front seam.  
Microfiber - Stretch tulle

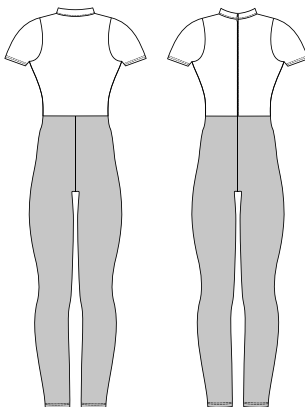
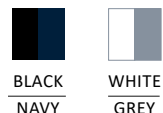


# ELAN

**Children : 6/8 - 8/10 - 10/12**

**Men : XS - S - M - L - XL**

Men's two-tone footless unitard. High neck with zipper front. Cotton Elasthan

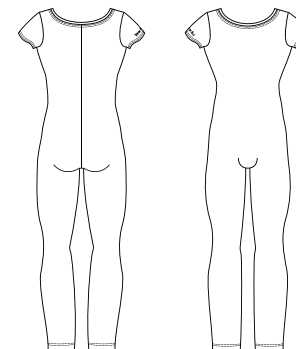


# ATLAS

**Children : 8/10 - 10/12 - 12/14**

**Men : XS - S - M - L - XL**

Cap sleeved men's unitard with a wide neckline in front and back.  
Microfiber





# BALLET SHOES



All sizes are unisex.

# PLUTON ♀

Split-sole premium “stretch” leather ballet shoe. Full glove leather is handmade and machine stitched. No drawstring binding, which provides unsurpassed comfort and flexibility. This premium shoe also offers flat stitch pleats that prevent bunching and bulging under the toes and the sole of the foot. Lower vamp shows off the arch of the foot while the premium glove leather material will hug the dancer’s foot and provide a sleek and professional look.

Available in three widths.

Split-sole

Premium cut leather

No drawstring

Pre-sewn elastic

**Size : 26 to 50 No Half Size**

**Width : Narrow - Medium - Wide**



WHITE



SALMON



GREY



BLACK

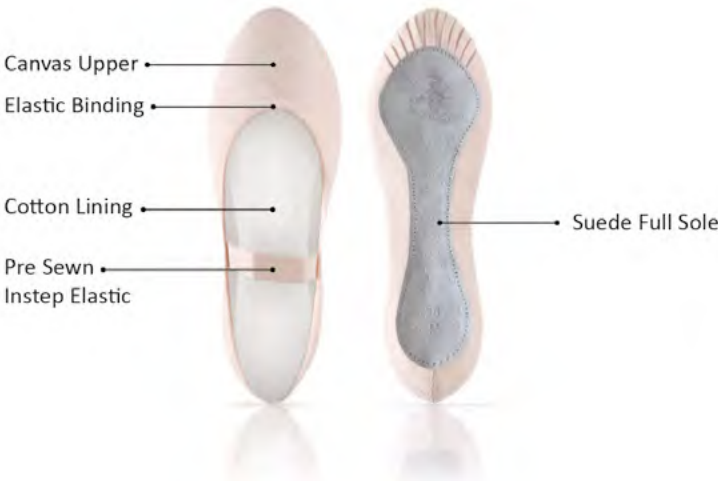




# JUNON

These new full sole canvas ballet shoes come in both medium and narrow widths to accommodate growing feet. The full sole design will provide support for our beginner dancers as they learn how to point and arch. Durable canvas on top and sturdy leather sole at the bottom with soft interior lining for comfort.

Size : 23 to 43 No Half Size  
Width : Narrow - Medium

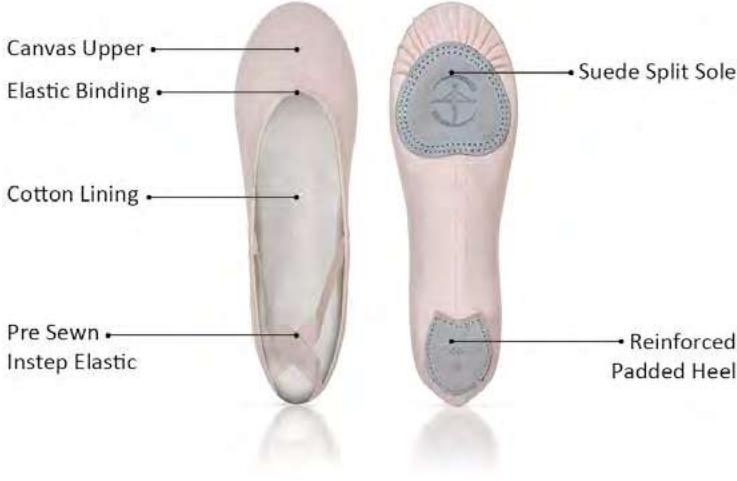
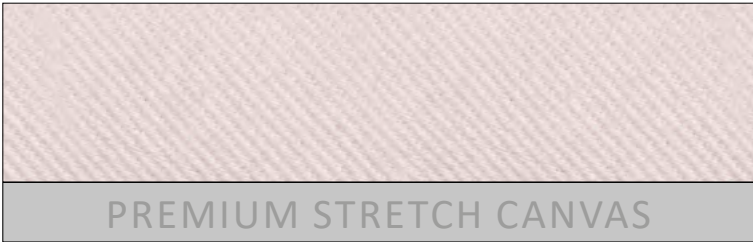


All sizes are unisex.

# CERES

A perfect premium stretch canvas ballet shoe for beginners with the look and feel of our Vesta. Two widths are provided to accommodate growing feet. Split-sole ballet slipper with pre-sewn elastics.

Size : 23 to 43 No Half Size  
Width : Narrow - Medium



All sizes are unisex.





# NEPTUNE

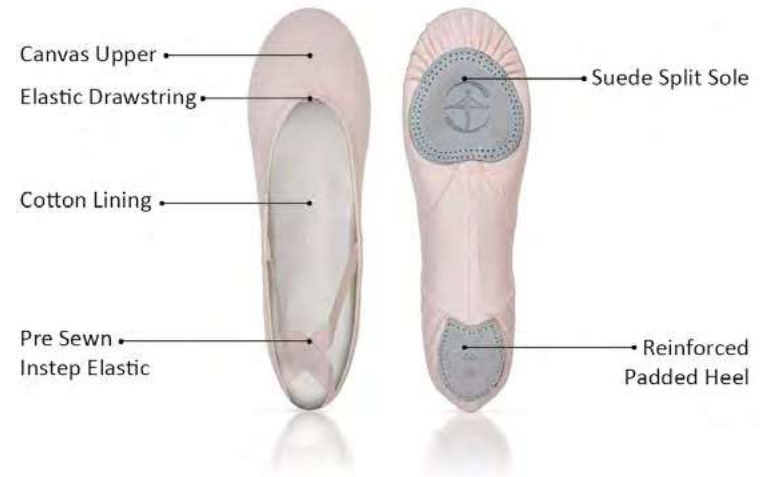


This premium split-sole ballet shoe features high quality canvas and flexible lining for comfort. Flat stitch pleats prevent bunching and bulging under the toes and the sole of the foot. Lower vamp as well as arch stitching shows off the arch of the foot and the shape of the sole which creates a better profile under the foot. Available in two widths. Split-sole Canvas Pre-sewn elastic

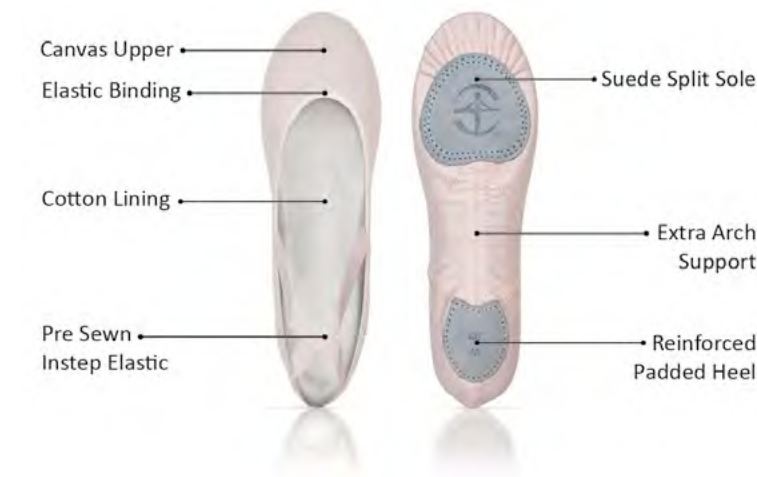
**Size : 26 to 50 No Half Size**

**Width : Narrow - Medium**

\* Available from size 26 to 46 only.



All sizes are unisex.



All sizes are unisex.

# VESTA



Split-sole stretch canvas ballet shoe. Full stretch canvas is handmade and machine stitched. No drawstring binding, which provides unsurpassed comfort and flexibility. This premium shoe also offers flat stitch pleats that prevent bunching and bulging under the toes and the sole of the foot. Lower vamp shows off the arch of the foot while the stretch canvas material will hug the dancer's foot and provide a sleek and professional look. Available in three widths.

Split-sole Stretch canvas No drawstring Pre-sewn elastic

**Size : 23 to 50 No Half Size**

**Width : Narrow - Medium - Wide**

\* Available from size 23 to 46 and in Narrow and Medium width only.





# SATURNE

Split-sole premium leather ballet shoe. Full glove leather is handmade and machine stitched. This premium shoe also features flat stitching of the pleats that prevents bunching and bulging under the toes and the sole of the foot. Lower vamp shows off the arch of the foot while the premium glove leather material will hug the dancer's foot and provide a sleek and professional look. Available in two widths. Split-sole Leather Pre-sewn elastic

Size : 26 to 46 No Half Size  
Width : Narrow - Medium



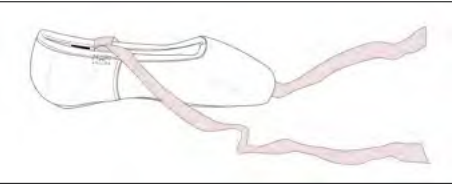
All sizes are unisex.

## WIDTH

- X → Medium
- XX → Wide
- XXX → Extra Wide
- XXXX → X Extra Wide

## RIBBONS

Available with pre-stitched high-quality satin or cotton ribbons (free option).



## SIZE

SIZE UK	13	1	1.5	2	2.5	3	3.5	4	4.5	5	5.5	6	6.5	7	7.5	8	8.5	9
SIZE EUR	32	33	33.5	34	35	35.5	36	36.5	37	38	39	39.5	40	41	41.5	42	42.5	43
SIZE JAPAN	19.8	20.4	20.8	21.1	21.8	22.1	22.4	22.8	23.1	24.2	24.9	25.5	25.8	26.4	26.8	27.2	27.5	27.8
SIZE US	1	2	3	4	5	6	6.5	7	7.5	8	8.5	9	9.5	10	10.5	11	12	13

# DEMI-POINTE

Satin demi-pointe shoes. Special box for beginners and a U cut for this shoe with no shank. Excellent pre-pointe shoe to develop and strengthen the muscles in preparation for full pointe work. Should never be used to go on pointe. Elastic drawstring.





# INSTINCT 2

Stretch Leather «Turner Shoe» with a high quality elastic binding and two elastics for secure fit.  
This turner shoe will allow a dancer to practice and perform their best without worrying about their toes separating.

The soft leather properly follows the dancer’s foot  
Half-sole design with covered toes.  
Suede sole with pleats.  
Premium elastic sewn in two directions for secure fit and wear.  
Ideal for dancers that want a closed toe shoe without the heel constriction.

**Leather**  
**Size : XS - S - M - L - XL**



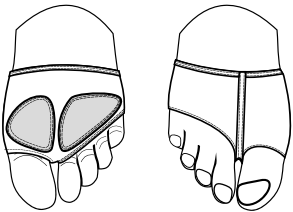
**Stretch canvas**  
**Size : XS - S - M - L - XL**



# PEGASUS

Innovative perforated microfiber material providing an invisible, flesh-toned look in class and on stage. This breathable modern-style shoe will allow a dancer to have support and padding on the ball of the foot as well as connection to the floor with an open-toe design. It separates the toe from rest of foot and provides a snug, glove-like fit with its premium elastic binding.

**Perforated microfiber**  
**Size : XS - S - M - L - XL - XXL**











# POINTE SHOES

- MEDIUM PROFILE AND CROWN, U-SHAPE VAMP
- LOWER CUT SIDES
- MEDIUM CUT HEEL
- ELASTIC BINDING, NO DRAWSTRING
- PRE-STITCHED SATIN OR COTTON RIBBON (FREE OPTION)

## WIDTH

X	→	Medium
XX	→	Wide
XXX	→	Extra Wide
XXXX	→	X Extra Wide

## SHANK

	→	S	Full
	→	M	Full
	→	H	3/4
	→	RH	1/2

## SIZE

3	3.5	4	4.5	5	5.5	6	6.5	7	7.5	8	SIZE UK
35.5	36	36.5	37	38	39	39.5	40	41	41.5	42	SIZE EUR
22.1	22.4	22.8	23.1	24.2	24.9	25.5	25.8	26.4	26.8	27.2	SIZE JAPAN
6	6.5	7	7.5	8	8.5	9	9.5	10	10.5	11	SIZE US

# OMEGA Ω

Handmade, in a classic “turn shoe” (made inside out) technique by craftsmen trained in the best traditions of European shoe making. With its pre-arched shape, the Omega tip is specially designed to match the shape of the foot. The elastic binding promotes a smooth line throughout the foot, the binding lays completely at on top of the foot. Flexible paste allows proper fit and enhanced flexibility while the reinforced toe box provides extended wear time. Coated silicone gel tip pad contributes to extra comfort. High wings built up gradually support the foot and create a beautiful, clean look. The slightly rounded reinforced platform is designed to flatten to the dancer’s balance point, typically the platform will morph within one to two hours of practice. All three shank options are flexible and allow the dancer to roll through demi-pointe. The shank follows the arch with precision, while providing proper support en-pointe. Polyurethane (microfiber) insole and heel area lining prevents “sliding” in the shoe and wicks away moisture. Minimal materials used to achieve light weight. An embossed outsole creates more traction. Available with pre-stitched high-quality satin or cotton ribbons (free option).





# ALFA α





Handmade, in a classic “turn shoe” (made inside- out) technique by craftsmen trained in the best traditions of European shoe making. With its pre-arched shape, the Alfa tip is specially designed to match the shape of the foot. The open U-shape vamp is securely cinched by an elastic drawstring that relives pressure from the heel. Flexible paste allows proper fit and elevated flexibility while the reinforced toe box provides extended wear time. Coated silicone gel tip pad contributes to extra comfort. The slightly rounded reinforced platform is designed to flatten to the dancer’s balance point, typically the platform will morph within one to two hours of practice. High wings built up gradually support the foot and create a beautiful, clean look. All three shank options are flexible and allow the dancer to roll through demi-pointe, following the arch with precision while properly supporting the dancer en-pointe. Polyurethane (microfiber) insole and heel area lining prevents “sliding” in the shoe and wicks away moisture. Minimal materials used to achieve light weight. An embossed outsole creates more traction. Available with pre-stitched high-quality satin or cotton ribbons (free option).

- MEDIUM PROFILE AND CROWN, U-SHAPE VAMP
- LOWER CUT SIDES
- MEDIUM CUT HEEL
- ELASTIC DRAWSTRING
- PRE-STITCHED SATIN OR COTTON RIBBON (FREE OPTION)

### WIDTH

X	→	Medium
XX	→	Wide
XXX	→	Extra Wide
XXXX	→	X Extra Wide

### SHANK

	→	S	Full
	→	M	Full
	→	H	3/4
	→	RH	1/2

### SIZE

SIZE UK	3	3.5	4	4.5	5	5.5	6	6.5	7	7.5	8
SIZE EUR	35.5	36	36.5	37	38	39	39.5	40	41	41.5	42
SIZE JAPAN	22.1	22.4	22.8	23.1	24.2	24.9	25.5	25.8	26.4	26.8	27.2
SIZE US	6	6.5	7	7.5	8	8.5	9	9.5	10	10.5	11





# *La Pointe*

By Wear Moi



*La Pointe*



Unlimited options, precision fit



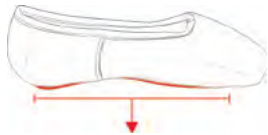
Designed and handcrafted in the finest European traditions, La Pointe displays a classic look, but with a new age feel. Traditionally stitched inside out, it is made with natural materials of the highest quality, offering non-slip leather outsole and sleep pleats.

Its specially developed toe box utilizes a superior paste designed specifically for a softer more comfortable shoe, which forms easily to the shape of an individual’s foot, while maintaining a softer feel with less break-in time. Its reinforced platform also significantly prolongs the lifespan of the shoe.

La Pointe offers a variety of lengths, widths, shapes and strengths to uniquely fit each specific foot to ensure a flawless performance every time, and suit the needs of any dancer, from beginners to professionals.

The pointe shoe that fits any dancer’s strength

Shank Strengths



LA POINTE BEGINNERS

	XS	Very soft shank, recommended to start pointe work at the barre. Great for the transition from demi-pointes into pointe shoes.	TEXON LEATHER
	S	Soft shank, recommended for beginners and dancers that like a soft, more broken-in feeling.	TEXON TEXON LEATHER

LA POINTE ADVANCED

	M	Medium shank, recommended for medium strength feet. Offers an easy break-in process.	TEXON CARDBOARD FIBER 2.0 LEATHER
	H	Hard shank, recommended for dancers with stronger feet, who also need the extra support and push.	TEXON CARDBOARD FIBER 2.5 LEATHER

LA POINTE PRO

La Pointe Pro offers reinforced soles, made of unbreakable shanks, that only comes in ½ length and hugs the arch of the foot perfectly. Both RH and RXH shanks help put dancers up en-pointe into a correct upright position without holding the foot back, and still allowing to easily roll through demi-pointe position.

	RH	Reinforced Hard Shank, recommended for dancers searching for unbreakable shanks and strong hold.	TEXON POLYCARBONATE LEATHER
	RXH	Reinforced extra hard shank, in addition to all specifications of RH, recommended for dancers that may need additional support, and extra hold.	CARDBOARD FIBER 2.5 POLYCARBONATE LEATHER



OPTION 1 TU



BOXES: TAPER

The **TAPER BOX** provides an ideal shape for dancers with narrower or tapered feet, typically called Egyptian or Greek-Tapered foot shapes.

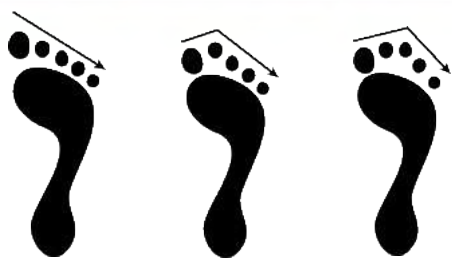


VAMPS: U-CUT

**U-VAMP** is a Medium to High vamp that is recommended for dancers with longer toes and higher breaking arches.



OPTION 2 TV



BOXES: TAPER

The **TAPER BOX** provides an ideal shape for dancers with narrower or tapered feet, typically called Egyptian or Greek-Tapered foot shapes.

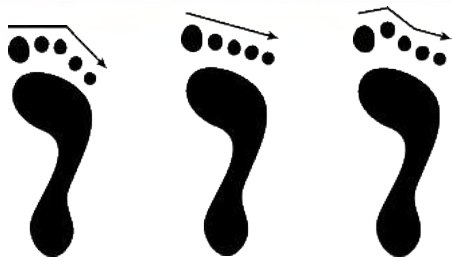


VAMPS: V-CUT

**V-VAMP** is a Medium-low to Low vamp that is recommended for dancers with shorter toes and lower breaking arches.



OPTION 3 SU



BOXES: SQUARE

The **SQUARE BOX** provides an ideal shape for dancers with wider or square feet, typically called Peasant or Greek-Square foot shapes.

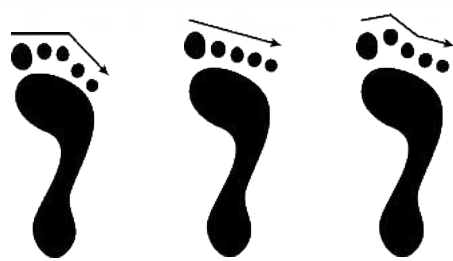


VAMPS: U-CUT

**U-VAMP** is a Medium to High vamp that is recommended for dancers with longer toes and higher breaking arches.



OPTION 4 SV



BOXES: SQUARE

The **SQUARE BOX** provides an ideal shape for dancers with wider or square feet, typically called Peasant or Greek-Square foot shapes.



VAMPS: V-CUT

**V-VAMP** is a Medium-low to Low vamp that is recommended for dancers with shorter toes and lower breaking arches.





The pointe shoe that fits any arch

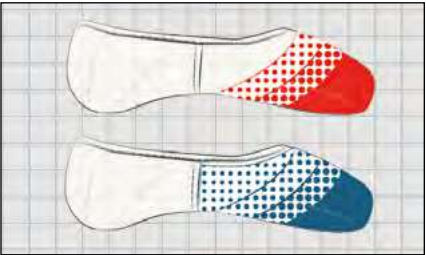
Shank Lengths

- FULL**  
A full length insole features a longer shank, recommended for dancers whose arch breaks higher than most.
- 3/4**  
Three quarter length shank is recommended for dancers that have a medium to low break in arch.
- 1/2**  
Half insole and shank is recommended for low break in arch. Provides a more broken-in feeling than other shank lengths.



Wings

- STANDARD WINGS:**  
Standard wings are typically recommended for a foot that has shorter toes and if a dancer has a hard time to roll through «Demi Pointe».
- HIGH WINGS:**  
Recommended for medium to long toes. High wings are very supportive throughout the entire wing area preventing creasing in the joint area.

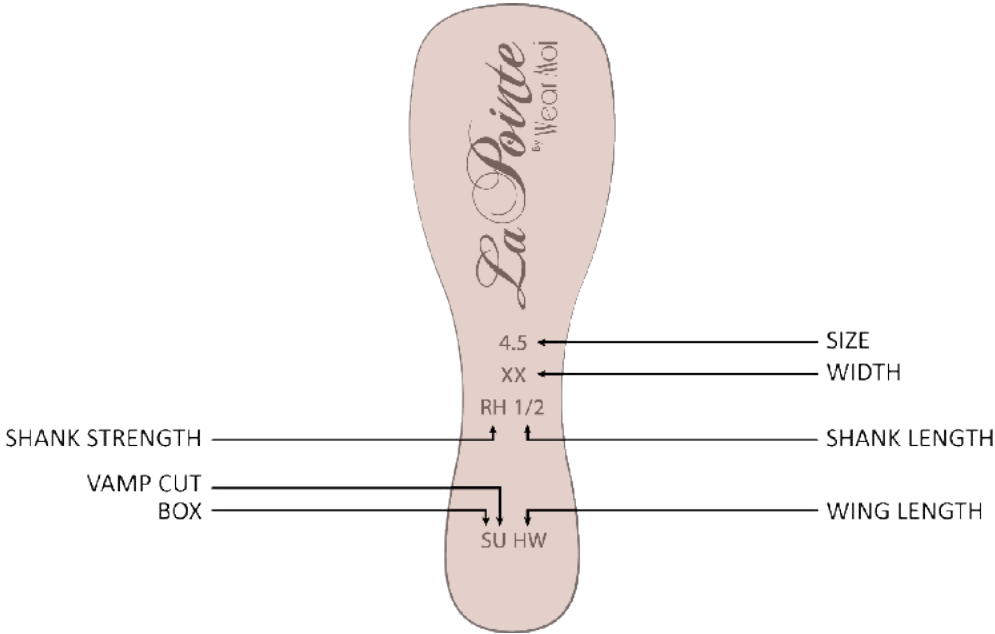


Free Ribbons

La Pointe is now available with pre-stitched, high-quality satin or cotton ribbons (free option).



La Pointe, The pointe shoe that fits



WIDTH

- N → Narrow
- X → Medium
- XX → Wide
- XXX → Extra Wide
- XXXX → X Extra Wide
- XXXXX → XX Extra Wide\*\*\*

SHANK STRENGTH

- XS → Extra Soft\*
- S → Soft
- M → Medium
- H → Hard
- RH → Reinforced Hard\*\*
- RXH → Reinforced Extra Hard\*\*

SHANK LENGTH

- Full
- 3/4
- 1/2

WINGS

- Standard Wings
- High Wings

SIZE

SIZE UK	13	1	1.5	2	2.5	3	3.5	4	4.5	5	5.5	6	6.5	7	7.5	8	8.5	9
SIZE EUR	32	33	33.5	34	35	35.5	36	36.5	37	38	39	39.5	40	41	41.5	42	42.5	43
SIZE JAPAN	19.8	20.4	20.8	21.1	21.8	22.1	22.4	22.8	23.1	24.2	24.9	25.5	25.8	26.4	26.8	27.2	27.5	27.8
SIZE US	1	2	3	4	5	6	6.5	7	7.5	8	8.5	9	9.5	10	10.5	11	12	13

\* only available in Full shank length | \*\* only available in 1/2 shank length | \*\*\* only available in Square Box

Order Example :

STYLE	SHANK STRENGTH	SHANK LENGTH	WIDTH	SIZE	WINGS	PRE STITCHED RIBBONS
Taper U Cut	Soft (La Pointe Beginners)	Full	XX	5	HIGH	Satin
Square V Cut	Medium (La Pointe Advanced)	Full	X	3,5	STANDARD	Cotton
Taper V cut	Hard (La Pointe Pro)	3/4	XX	5	HIGH	No





## Making your own custom-tailored shoes

Because every foot is unique, Wear Moi offers custom tailoring on all of our pointe shoes. Depending on factors such as foot shape and size, dancers of any level (Beginner, Advanced, Professional) may encounter difficulty in finding the perfect fit in a pointe shoe. Our custom tailoring service\* is designed to cater to any dancer's needs. Whether it's tailoring the platform length or adjusting the wings, Wear Moi can manufacture pointe shoes to meet individual needs and create a truly custom shoe.

Many ballerinas, from recreational to pre-professional programs to dancers of renowned ballet companies, already benefit from this service, and now you can too! We make things easy and keep your specifications saved a hassle-free reorder. This is an opportunity to get the perfect shoe made just for you.

\*no minimum order

# Wear Moi

## Custom Tailored Pointe Shoes

Date : ... / ... / ...

Fitter's name : \_\_\_\_\_

Name : \_\_\_\_\_

Address : \_\_\_\_\_

Phone : \_\_\_\_\_

E-Mail : \_\_\_\_\_

La Pointe TAPPER ☐

ALFA ☐

La Pointe SQUARE ☐

OMEGA ☐

SIZE IN	
WIDTH	N X XX XXX XXXX XXXXX
SHANK	XS S M H RH RXH
INSOLE	F 3/4 1/2
DRAWSTRING	ELASTIC COTTON
BORDER**	ELASTICATED*** CLASSIC
RIBBON	SATIN COTTON NO
VAMP*	
CUT**	U V
HEEL*	
SIDE*	
WINGS**	STANDARD HIGH
PLATFORM*	

\*Measurement in millimeter \*\*La Pointe Only \*\*\*No Drawstring

Comments : \_\_\_\_\_

Mesures

1	2	3	4	5	6.5	7	8	9	10	11	26
					5.5						25
					5						24
					4.5						23
					3.5						22
					2.5						21
					2						20
					1						19
					13						18
											17
											16
											15
											14
											13
											12
											11
											10
											9
											8
											7
											6
											5
											4
											3
											2
											1
											cm

WIDTH

N → Narrow  
X → Medium  
XX → Wide  
XXX → Extra Wide  
XXXX → X Extra Wide  
XXXXX → XX Extra Wide\*\*\*

SHANK

XS → Extra Soft\*  
S → Soft  
M → Medium  
H → Hard  
RH → Reinforced Hard\*\*  
RXH → Reinforced Extra Hard\*\*

INSOLE

Full → 3/4 → 1/2





# SHOE ACCESSORIES

DIV 56



Pre-cut pointe shoe / ballet shoe cotton ribbon.  
**Length : 2 m / 2.20 yards per unit**  
**Width : 2.2 cm / 7/8" wide**

DIV 57



Pre-cut pointe shoe / ballet shoe ribbon.  
**Length : 2 m / 2.20 yards per unit**  
**Width : 2.3 cm / 15/16" wide**

DIV 61



Satin ribbon with stretch insert.  
Takes the stress off your heel tendon.  
4 per set  
**Length : 57 cm / 0.62 yards per unit**  
**Width : 2.3 cm / 15/16" wide**

DIV 58



Pre-cut pointe shoe elastic.  
**Length : 50 cm / 0.55 yards per unit**  
**Width : 1.9 cm / 3/4" wide**

DIV 59



Pre-cut pointe shoe invisible elastic.  
**Length : 50 cm / 0.55 yards per unit**  
**Width : 2,5 cm / 1" wide**

DIV 52



Thin and flexible silicone toe pads. Form perfectly to the foot allowing a dancer to truly feel the floor for proper technique while worn.

DIV 15



Cotton ribbon, perfect for canvas ballet shoes, great for the matte look.  
**Length : 50 m / 55 yards per roll**  
**Width : 2.2 cm / 7/8" wide**

DIV 31



Satin ribbon in roll.  
**Length : 80 m / 87 yards per roll**  
**Width : 2.3 cm / 15/16" wide**

DIV 55



Pointe Shoe elastic in roll.  
**Length : 20 m / 22 yards per roll**  
**Width : 1.9 cm / 3/4" wide**

DIV 54



Wear Moi invisible elastic in roll.  
**Length : 25 m / 27 yards per roll**  
**Width : 2.5 cm / 1" wide**

DIV 13



Rock rosin, a real dancers helper.  
**Weight : 400g / 0.88 Pound**



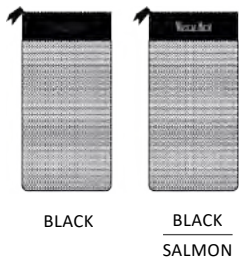


# DIV 79

Zippered bag made from breathable mesh that is perfect for your ballet shoes.

Honeycomb Fabric - Canvas

**SIZE :**  
**Height : 25 cm**  
**Width : 13 cm**

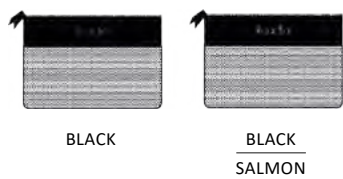


# DIV 80

Small accessory bag featuring breathable mesh and a zippered top for security.

Honeycomb Fabric - Canvas

**SIZE :**  
**Height : 12 cm**  
**Width : 18 cm**

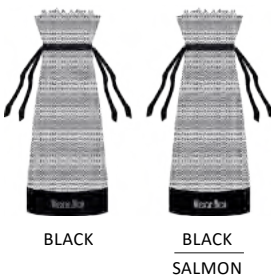


# DIV 81

Classic breathable mesh bag with drawstrings, perfect for keeping your pointe shoes pristine.

Honeycomb Fabric - Canvas

**SIZE :**  
**Height : 33 cm**  
**Width : 12 cm**



# DIV 82

This one of a kind pointe shoe bag was made exclusively for the avid ballet dancer. Store up to four pairs of pointe shoes in the breathable compartments. Features long shoulder straps for extra comfort and carrying ease.

Honeycomb Fabric - Canvas

**SIZE :**  
**Height : 22 cm**  
**Width : 16 cm**







# BAGS



## DIV 105

### SIZE :

Height : 33 cm

Width : 48 cm

Shaped, lined tote/yoga bag cut in a pleated satin fabric on front and smooth on the back. Double zip opening on the top and many zipped and patch pockets. Includes an adjustable and detachable shoulder strap.

Polyester Canvas Satin



BLACK



## DIV 104

### SIZE :

Height : 36 cm

Width : 32 cm

Canvas backpack enhanced with iconic dancer logo on front. Large zipped openings on sides of bag. Sliding closure with plastic stopper for main opening. Top handle for hands and adjustable shoulder straps.

Polyester Canvas



BLACK



LIGHT PINK



## DIV 66

### SIZE :

Height : 30 cm

Width : 50 cm

This multi-compartment dance tote bag incorporates slimming waves with practical outer compartments that close with magnetic studs for easy access. Center compartment closes with zipper for security. Leather handles and detail. Wear Moi tutu keychain included.

Microfiber - Leather



BLACK

PRUNE



## DIV 103

### SIZE :

Height : 33 cm

Width : 28 cm

From street to class, the DIV103 quilted backpack features a large main compartment with cinch closure, interior zip pocket and an easy access side zipper! This stylish and versatile backpack is perfect to carry all your dance needs.

Polyester Quilted Satin



BLACK





## DIV 92

**SIZE :**

Height : 32 cm

Width : 36 cm

A large size quilted tote bag, honeycomb textured, with inside compartment. Satin lining and drawstring cinch closure.

Quilted Perforated Fabric



BLACK



CANDY



## DIV 93

**SIZE :**

Height : 23 cm

Width : 27 cm

A small size quilted tote bag, honeycomb textured, with inside compartment. Satin lining and drawstring cinch closure.

Quilted Perforated Fabric



BLACK



CANDY



## DIV 94

**SIZE :**

Height : 13 cm

Width : 12 cm

Quilted honeycomb textured accessory pouch with satin lining and zippered top. Great for keeping all your hair accessories.

Quilted Perforated Fabric



BLACK



CANDY



## DIV 95

**SIZE :**

Height : 38 cm

Width : 30 cm

A pointe shoe carry bag featuring a spacious mesh compartment for all your dance shoes, front zip pocket for your sewing accessories and a bottom zip compartment that will be very useful.

Honeycomb Fabrics Breathable Mesh



BLACK



## DIV 96

**SIZE :**

Height : 40 cm

Width : 30 cm

A nylon backpack and a comfortable shoulder strap. Very functional with multiple compartments inside and three zipped pockets on the outside. Waterproof and fashionable all in one. This multipurpose backpack is perfect for dance classes and everyday use.

Nylon



BLACK



## DIV 107

**SIZE :**

Height : 30 cm

Width : 41 cm

Printed tote bag with a full zipper and two strong handles.

Stand out from the crowd and show off your Wear Moi bag.

Polyester



BLACK



## DIV 67

**SIZE :**

Height : 19 cm

Width : 30 cm

Taffeta and satin create this adorable children's handbag. Comes complete with a magnet closure and two pockets on the interior, a zip pocket on the front and a shoe compartment. Free keychain attached.

Taffeta - Satin



GREY



LILAC

SALMON

SALMON



## DIV 99

**SIZE :**

Height : 23 cm

Width : 26 cm

A dual compartment bag featuring a water resistant material and backpack straps. Beautiful design for practical use.

Polyester PU Leather



PINK



LILAC



# MASKS

## OUR HIGH-PERFORMING FACE MASKS Washable & Reusable = Economical & Ecological

Our multi-layer, reusable, washable cloth face masks protect the wearer & those around them. You and your teams will experience amazing performance with the perfect balance of breathability and safety. Our middle layer of non-woven polyester stops 98% of particles over 3 microns. For reference, saliva droplets measure between 5-10 microns in diameter. And because our masks have no center seam, even fewer particles get through keeping you safer and more comfortable.

TYPE OF USE		DROPLET CONTAINMENT (*)
SPECS		RESULTS
Air permeability (L.m-2.S-1)	With 100 Pa depression	176
Protection against aerosols (%)	3µm Particles	98

(\*) Wearer's Protection Use: flow measured from the outside to the inside, when breathing in.



# MASK004

Size : Toddler, Children, Women, Men

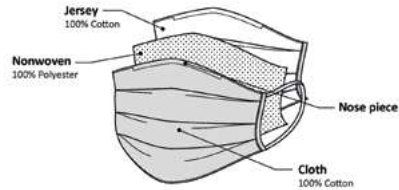
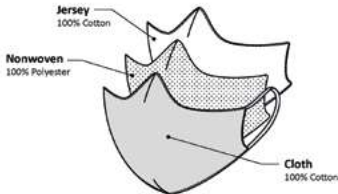
\* Not available in sizes Toddler, Children



WHITE



BLACK



SIZE	TODDLER CM   INCHES	CHILDREN CM   INCHES	WOMEN CM   INCHES	MEN CM   INCHES
Width	15   6	16.5   6 ½	18.5   7 ½	20.5   8
Folded Height	5.5   2 ¼	6.5   2 ½	7.5   3	8.5   3 ½
Unfolded Height	10.5   4 ¼	16   6 ¾	18   7	20   7 ¾



# MASK008

Size : Toddler, Children, Women, Men

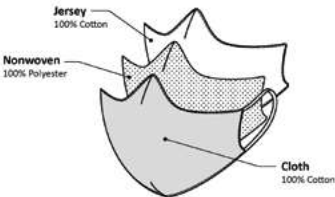
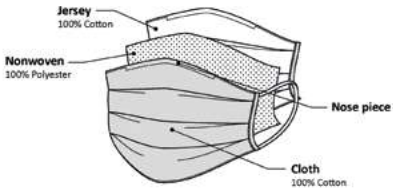
\* Not available in sizes Toddler, Children



WHITE



BLACK



SIZE	TODDLER CM   INCHES	CHILDREN CM   INCHES	WOMEN CM   INCHES	MEN CM   INCHES
Width	14   5 ½	16   6 ¾	18   7	20   7 ¾
Folded Height	11   4 ¼	14.5   5 ¾	15.5   6	16.5   6 ½



# MASK017

Size : Toddler, Children, Women, Men



BEIGE



PACIFIC



ROSE



LILAC



CHOCOLATE



NAVY



PRUNE



DARK GREY

Toddler		✓	✓	✓			
Children	✓	✓	✓	✓	✓		
Women	✓	✓	✓	✓	✓	✓	
Men					✓	✓	✓

SIZE	TODDLER CM   INCHES	CHILDREN CM   INCHES	WOMEN CM   INCHES	MEN CM   INCHES
Width	14   5 ½	16   6 ¾	18   7	20   7 ¾
Folded Height	11   4 ¼	14.5   5 ¾	15.5   6	16.5   6 ½



# MASK018

Size : Toddler, Children, Women, Men



BEIGE



PACIFIC



ROSE



LILAC



CHOCOLATE



NAVY



PRUNE



DARK GREY

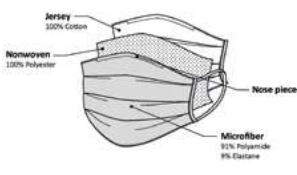
Toddler		✓	✓	✓			
Children	✓	✓	✓	✓	✓		
Women	✓	✓	✓	✓	✓	✓	
Men					✓	✓	✓

SIZE	TODDLER CM   INCHES	CHILDREN CM   INCHES	WOMEN CM   INCHES	MEN CM   INCHES
Width	15   6	16.5   6 ½	18.5   7 ½	20.5   8
Folded Height	5.5   2 ¼	6.5   2 ½	7.5   3	8.5   3 ½
Unfolded Height	10.5   4 ¼	16   6 ¾	18   7	20   7 ¾



3-PLEAT DESIGN

- Blocks projection of 98% of any particles over 3 microns (human saliva droplets measure between 5 microns and 10 microns)
- Three layers of fabric, including a non-woven layer limiting particles projection
- No front seam = no holes in the fabric and no air breaches through the mask
- 100% cotton jersey lining = Allergy-free & itch-free
- Comfortable elastic ear loops
- Choice of colors to fit your eyes shade, clothes or mood
- Stay in place on the face when moving
- 3-pleat design to adjust tightness and how much face coverage you want



SIZE	WOMEN CM   INCHES
Width	18.5   7 ½
Folded Height	7.5   3
Unfolded Height	18   7



MASKO20

Size : Women



MASKO22

Size : Women



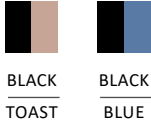
MASKO24

Size : Women



MASKO26

Size : Women



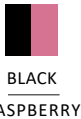
MASKO28

Size : Women



MASKO30

Size : Women



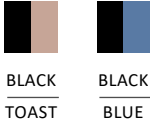
MASKO32

Size : Women



MASKO25

Size : Children, Women



MASKO27

Size : Women



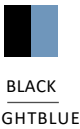
MASKO29

Size : Children, Women



MASKO31

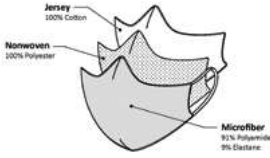
Size : Women



NON PLEATED DESIGN

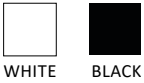
- Blocks projection of 98% of any particles over 3 microns (human saliva droplets measure between 5 microns and 10 microns)
- Three layers of fabric, including a non-woven layer limiting particles projection
- No front seam = no holes in the fabric and no air breaches through the mask
- 100% cotton jersey lining = Allergy-free & itch-free
- Comfortable elastic ear loops
- Choice of colors to fit your eyes shade, clothes or mood
- Stays in place when moving

SIZE	CHILDREN CM   INCHES	WOMEN CM   INCHES
Width	16   6 ½	18   7
Folded Height	14.5   5 ¾	15.5   6 ¼



MASKO19

Size : Children, Women



MASKO21

Size : Women



MASKO23

Size : Women





# DIV 63

Tutu keychain with rhinestones.  
Leather - Tulle



BLACK  
PACIFIC



BLACK  
PEACH



BLACK  
LILAC



# DIV 62

Tutu keychain with rhinestones.  
Satin - Tulle



BLACK  
SALMON

# DIV 88

Tutu keychain with rhinestones.  
Leather - Tulle



SALMON  
WHITE

# DIV 84

Adorable cat taffeta keychain with shiny tutu skirt and rhinestones.



LILAC



LIGHT GREY



WHITE

WALNUT

LIGHT PINK

DARK PINK

BEIGE

DARK BEIGE

TAN

PEACH

PINK

LILAC

PACIFIC

MINT

OCEAN

SKY

LIGHT BLUE

LIGHT GREY

GREY

DARK GREY

ROSE

RED

FUSHIA

FRENCH BLUE

BYZANTINE

PRUNELLE

PURPLE

AMETHISTE

BURGUNDY

PRUNE

FOREST GREEN

PEACOCK BLUE

ROYAL BLUE

NAVY

WALNUT

COPPER

CHOCOLATE

BLACK



# SIZE CHART

## TIGHTS IN CM

PRODUCT	DIV01 - DIV60							
SIZE	4/6	6/8	8/10	10/12	XS	S	M	L
HEIGHT IN CM	95 / 110	110 / 120	120 / 130	130 / 140	140 / 150	150 / 160	160 / 170	170 / 180
PRODUCT	DIV03							
SIZE	4/8	8/12	12/14	S/M	L/XL			
HEIGHT IN CM	95 / 120	120 / 140	140 / 160	150 / 170	170 / 190			

## TIGHTS IN INCHES

PRODUCT	DIV01 - DIV60							
SIZE	4/6	6/8	8/10	10/12	XS	S	M	L
HEIGHT IN INCHES	3'1" / 3'7"	3'7" / 3'11"	3'11 / 4'3"	4'3" / 4'7"	4'7" / 4'11"	4'11" / 5'3"	5'3" / 5'7"	5'7" / 5'11"
PRODUCT	DIV03							
SIZE	4/8	8/12	12/14	S/M	L/XL			
HEIGHT IN INCHES	3'1" / 3'11"	3'11" / 4'7"	4'7" / 5'3"	4'11" / 5'7"	5'7" / 6'3"			

## SOFT SHOES

EURO	23	24	25	26	27	28	29	30	31	32	33	34	35	36	37	38	39	40	41	42	43	44	45	46	47	48	49	50
US	7	8	9	10	10.5	11	12.5	13	13.5	1.5	3	4	4.5	5.5	6.5	7	7.5	8	8,5	9	9,5	10,5	11	12	12,5	13	14	15
UK	6	7	8	8.5	9	10	11	11.5	12.5	13	1	2	2.5	3.5	4	5	5.5	6.5	7.5	8	9	9.5	10	11	12	12,5	13	14
JAPAN	14,5	15	15,5	16	16,5	17,5	18	18,5	19	19,5	20	21	21,5	22	22,5	23,5	24,5	25,5	26	26,5	27,5	28,5	29,5	30	30,5	31	31,5	32

## TURNER SHOES

	XS		S		M		L		XL	
EURO	34	35	36	37	38	39	40	41	42	43
US	4	4.5	5.5	6.5	7	7.5	8	8,5	9	9,5
UK	2	2.5	3.5	4.5	5	5.5	6.5	7	8	9
JAPAN	21	21,5	22	22,5	23,5	24,5	25,5	26	26,5	27,5

## DEMI-POINTE

SIZE UK	13	1	1.5	2	2.5	3	3.5	4	4.5	5	5.5	6	6.5	7	7.5	8	8.5	9
SIZE EUR	32	33	33.5	34	35	35.5	36	36.5	37	38	39	39.5	40	41	41.5	42	42.5	43
SIZE JAPAN	19.8	20.4	20.8	21.1	21.8	22.1	22.4	22.8	23.1	24.2	24.9	25.5	25.8	26.4	26.8	27.2	27.5	27.8
SIZE US	1	2	3	4	5	6	6.5	7	7.5	8	8.5	9	9.5	10	10.5	11	12	13

## POINTES ALFA/OMEGA

SIZE UK	3	3.5	4	4.5	5	5.5	6	6.5	7	7.5	8
SIZE EUR	35.5	36	36.5	37	38	39	39.5	40	41	41.5	42
SIZE JAPAN	22.1	22.4	22.8	23.1	24.2	24.9	25.5	25.8	26.4	26.8	27.2
SIZE US	6	6.5	7	7.5	8	8.5	9	9.5	10	10.5	11

## LA POINTE

SIZE UK	13	1	1.5	2	2.5	3	3.5	4	4.5	5	5.5	6	6.5	7	7.5	8	8.5	9
SIZE EUR	32	33	33.5	34	35	35.5	36	36.5	37	38	39	39.5	40	41	41.5	42	42.5	43
SIZE JAPAN	19.8	20.4	20.8	21.1	21.8	22.1	22.4	22.8	23.1	24.2	24.9	25.5	25.8	26.4	26.8	27.2	27.5	27.8
SIZE US	1	2	3	4	5	6	6.5	7	7.5	8	8.5	9	9.5	10	10.5	11	12	13

# INDEX

	ABBIE	P.5
	ABELIA	P.47
	ACAJOU	P.16
NEW	ADELA	P.55
	ADENIA	P.42
	AELIS	P.54
	AENOS	P.66
	AKIRA	P.54
	ALBAN	P.80
	ALCYONE	P.83
	ALEGRIA	P.41
	ALEGRO	P.46
	ALFA	P.100
	ALIAS	P.55
	ALOES	P.68
NEW	ALPIN	P.78
	ALTAN	P.76
NEW	AMALTEA	P.22
	AMANDE	P.44
	AMBER	P.48
	ANA	P.53
	ANDESITE	P.55
	ANJOU	P.11
	APOLO	P.47
	ARAS	P.66
	ARDESIA	P.13
	AREZZA	P.53
	ARIELLE	P.14
	ARLETTY	P.39
	ASTANA	P.41
	ATENA	P.30
	ATLANTE	P.44
	ATLAS	P.87
	ATON	P.42
	AZALEE	P.26
	AZTEC	P.55
	AZUREA	P.13
NEW	AZURITE	P.32
NEW	BAIVA	P.65
	BALKALA	P.12
	BALLERINE	P.12
	BAMBOU	P.16
NEW	BANBA	P.36
	BELEM	P.82
	BELINDA	P.52
	BOUNTY	P.53
NEW	BRIZO	P.35
NEW	BUTIS	P.35
	CABUKI	P.10
	CALOU	P.68
NEW	CANDIDE	P.7
	CANNELLE	P.26
	CAPELLA	P.68
	CAPRI	P.86
	CAPRICE	P.9
	CARLINE	P.26
	CARMEN	P.70
	CASSIS	P.9
	CERES	P.91
	CEVLAN	P.70
	CLOVIS	P.83
	COLOMBINE	P.12
	CONDOR	P.78
	CONRAD	P.78

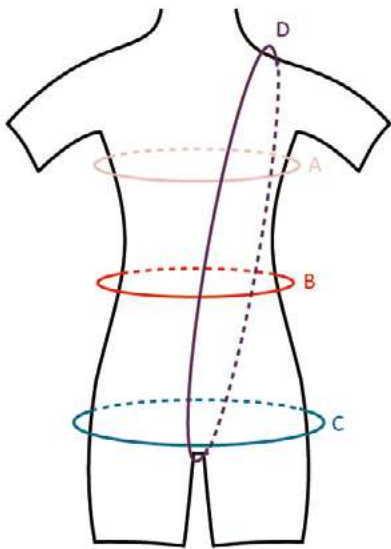
	CORALIE	P.7
	COREA	P.54
	CRISTAL	P.71
	CRYALIDE	P.71
NEW	CYPRES	P.9
	DANCEBELT EXTRA WIDE	P.79
	DANCEBELT NARROW	P.79
	DANCEBELT WIDE	P.79
	DAPHNE	P.46
	DELIA	P.46
NEW	DEMETER	P.35
	DEMI POINTE	P.95
NEW	DIAMANT	P.22
	DIANE	P.5
NEW	DIONYSOS	P.49
	DIV01	P.56
	DIV03	P.58
	DIV13	P.113
	DIV15	P.112
	DIV31	P.112
	DIV42	P.50
	DIV52	P.113
	DIV54	P.113
	DIV55	P.113
	DIV56	P.112
	DIV57	P.112
	DIV58	P.113
	DIV59	P.113
	DIV60	P.59
	DIV61	P.112
	DIV62	P.124
	DIV63	P.124
	DIV66	P.117
	DIV67	P.119
	DIV79	P.115
	DIV80	P.115
	DIV81	P.115
	DIV82	P.115
	DIV84	P.124
	DIV88	P.124
	DIV92	P.118
	DIV93	P.118
	DIV94	P.118
	DIV95	P.118
	DIV96	P.119
	DIV97	P.50
	DIV98	P.50
	DIV99	P.119
	DIV103	P.117
	DIV104	P.117
	DIV105	P.117
NEW	DIV107	P.119
NEW	DIV108	P.50
NEW	DIV109	P.51
NEW	DIV110	P.50
NEW	DIV111	P.50
NEW	DIV112	P.51
NEW	DIV113	P.51
NEW	DIV114	P.51
NEW	DIV115	P.51
NEW	DIV116	P.51
	DOLLY	P.46
NEW	DRYADES	P.49
	DUCHESSE	P.30
	ELAN	P.86
	EMELINE	P.6
	EMERAUDE	P.6

	EMMA	P.39
	EMYS	P.40
	ERINE	P.29
	ETINCELLE	P.29
	EVIDENCE	P.29
	FADO	P.48
	FAUSTINE	P.6
NEW	FELICITE	P.32
NEW	FENRIS	P.49
	FULL SEAT DANCEBELT	P.79
	GALATE	P.6
	GIPSY	P.14
	HAMADA	P.83
	HAXO	P.78
	HELIX	P.44
NEW	HESTIA	P.20
	HEVEA	P.66
NEW	HIBISCUS	P.22
	HIDALGO	P.80
	HORACIO	P.77
NEW	IBERIS	P.20
	IGOR	P.76
	IKITA	P.53
	ILIADÉ	P.72
	IMPULSE2	P.96
	INSTINCT2	P.96
NEW	IONA	P.36
	IRIS	P.52
	ISIS	P.42
	IVAN	P.76
	IZALIA	P.71
NEW	JALENDRA	P.64
NEW	JASON	P.77
	JUNON	P.90
NEW	JURKA	P.60
	KAITO	P.44
	KASSY	P.11
	LA POINTE	P.102
NEW	LADO	P.62
NEW	LAIKA	P.32
NEW	LAVANDE	P.9
NEW	LENAE	P.39
NEW	LEVANA	P.61
NEW	LINDIA	P.36
	LORCA	P.85
NEW	LOUKI	P.61
NEW	LOVINA	P.7
	LUMA	P.48
	MABEL	P.10
	MACARON	P.14
	MAGDA	P.47
	MAGNOLIA	P.26
	MALONE	P.82
	MANX	P.40
	MARCEAU	P.85
	MARIE	P.8
	MARQUISE	P.8
	MASK004	P.120
	MASK008	P.120
	MASK017	P.121
	MASK018	P.121
	MASK019	P.123
	MASK020	P.122
	MASK021	P.123
	MASK022	P.122
	MASK023	P.123
	MASK024	P.122

	MASK025	P.123
	MASK026	P.122
	MASK027	P.123
	MASK028	P.122
	MASK029	P.123
	MASK030	P.122
	MASK031	P.123
	MASK032	P.122
	MAUVE	P.8
	MILO	P.7
	MIMOSA	P.40
	NATICE	P.47
	NAYA	P.70
	NEPTUNE	P.92
	NICEA	P.12
	NOISETTE	P.17
	NUAGE	P.16
NEW	OBERON	P.77
	OCADIA	P.48
	OCTAVE	P.76
	ODALIA	P.10
	ODEON	P.85
	OMEGA	P.99
	OPALE	P.40
	OPUS	P.72
	ORION	P.80
	OSIRIS	P.42
	PACO	P.85
NEW	PALOMINO	P.72
NEW	PANDORE	P.73
NEW	PATIENCE	P.73
	PEGASUS	P.97
	PENELOPE	P.72
NEW	PIVOINE	P.73
	PLUTON	P.89
	PRALINE	P.17
	PRESTON	P.82
NEW	RAVANA	P.65
	ROMEO	P.86
NEW	ROSEA	P.62
NEW	RUNES	P.60
	SACHA	P.82
	SATIS	P.41
	SATURNE	P.94
NEW	SEKOIA	P.32
NEW	SELENE	P.62
NEW	SKADA	P.65
	SOLEN	P.41
	SOLO	P.80
NEW	SORAIA	P.20
	SUPERBE	P.69
	SYRMA	P.69
	TAMARIS	P.8
	TANGO	P.86
	THALIA	P.5
	TIARA	P.70
NEW	TIFANY	P.35
NEW	TINA	P.49
NEW	TUCANA	P.36
	TULIPE	P.69
	ULENA	P.10
	UTAMI	P.71
NEW	VALENTIA	P.39
	VERSAO	P.77
	VESTA	P.93
NEW	VOLUPTÉ	P.63
NEW	ZENON	P.21



# SIZE CHART TEXTILES IN CM AND M



## GIRLS AND WOMEN

SIZES	AGE 2/4	AGE 4/6	AGE 6/8	AGE 8/10	AGE 10/12	AGE 12/14
A : Chest Width	50 - 56 cm	53 - 58 cm	56 - 61 cm	63 - 68 cm	66 - 71 cm	70 - 75 cm
B : Waist	45 - 50 cm	49 - 54 cm	50 - 55 cm	52 - 57 cm	53 - 58 cm	55 - 60 cm
C : Hips	50 - 55 cm	55 - 60 cm	60 - 65 cm	65 - 70 cm	72 - 78 cm	78 - 83 cm
D : Girth	85 - 100 cm	96 - 105 cm	105 - 115 cm	115 - 123 cm	120 - 128 cm	125 - 133 cm
Height (Size)	95 - 1.05 m	1 m - 1.15 m	1.10 m - 1.25 m	1.20 m - 1.35 m	1.30 m - 1.45 m	1.40 m - 1.55 m

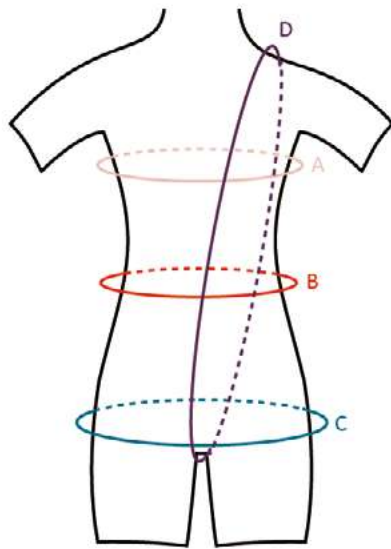
SIZES	XS	S	M	L	XL	XXL
A : Chest Width	75 - 80 cm	80 - 85 cm	85 - 90 cm	90 - 95 cm	95 - 100 cm	100 - 105 cm
B : Waist	58 - 63 cm	60 - 65 cm	65 - 70 cm	70 - 75 cm	75 - 80 cm	80 - 85 cm
C : Hips	82 - 88 cm	87 - 92 cm	92 - 97 cm	95 - 100 cm	98 - 103 cm	100 - 108 cm
D : Girth	132 - 140 cm	140 - 148 cm	148 - 156 cm	155 - 164 cm	164 - 172 cm	168 - 176 cm
Height (Size)	1.50 m - 1.60 m	1.55 m - 1.65 m	1.60 m - 1.70 m	1.65 m - 1.75 m	1.70 m - 1.80 m	1.75 m - 1.85 m

## BOYS AND MEN

SIZES	AGE 2/4	AGE 4/6	AGE 6/8	AGE 8/10	AGE 10/12	AGE 12/14
A : Chest Width		56 - 60 cm	60 - 65 cm	64 - 69 cm	68 - 75 cm	72 - 79 cm
B : Waist		52 - 57 cm	56 - 60 cm	59 - 63 cm	62 - 65 cm	64 - 68 cm
C : Hips		55 - 60 cm	60 - 65 cm	65 - 70 cm	71 - 78 cm	75 - 80 cm
Height (Size)		1 m - 1.20 m	1.13 m - 1.33 m	1.24 m - 1.44 m	1.35 m - 1.55 m	1.40 m - 1.65 m

SIZES	XS	S	M	L	XL	XXL
A : Chest Width	76 - 83 cm	83 - 91 cm	91 - 97 cm	97 - 104 cm	104 - 110 cm	
B : Waist	65 - 70 cm	70 - 75 cm	75 - 80 cm	80 - 85 cm	85 - 90 cm	
C : Hips	80 - 85 cm	85 - 90 cm	90 - 95 cm	95 - 100 cm	100 - 105 cm	
Height (Size)	1.54 m - 1.68 m	1.61 m - 1.75 m	1.68 m - 1.82 m	1.75 m - 1.89 m	1.82 m - 1.96 m	

# SIZE CHART TEXTILES IN INCHES, FT & INCHES



## GIRLS AND WOMEN

SIZES	AGE 2/4	AGE 4/6	AGE 6/8	AGE 8/10	AGE 10/12	AGE 12/14
A : Chest Width	20 - 22"	21 - 23"	22 - 24"	25 - 27"	26 - 28"	28 - 30"
B : Waist	18 - 20"	19 - 21"	20 - 22"	21 - 23"	21 - 23"	22 - 24"
C : Hips	20 - 22"	22 - 24"	24 - 26"	26 - 28"	29 - 31"	31 - 33"
D : Girth	34 - 39"	38 - 41"	41 - 45"	45 - 49"	48 - 51"	50 - 53"
Height (Size)	3'1" - 3'5"	3'3" - 3'9"	3'7" - 4'1"	3'11" - 4'5"	4'3" - 4'9"	4'7" - 5'1"

SIZES	XS	S	M	L	XL	XXL
A : Chest Width	30 - 32"	32 - 34"	34 - 36"	36 - 38"	38 - 40"	40 - 42"
B : Waist	23 - 35"	24 - 26"	26 - 28"	28 - 30"	30 - 32"	32 - 34"
C : Hips	33 - 35"	35 - 37"	37 - 39"	38 - 40"	39 - 41"	40 - 43"
D : Girth	52 - 55"	55 - 58"	58 - 62"	62 - 65"	65 - 68"	66 - 69"
Height (Size)	4'11" - 5'3"	5'1" - 5'5"	5'3" - 5'7"	5'5" - 5'9"	5'7" - 5'11"	5'9" - 6'

## BOYS AND MEN

SIZES	AGE 2/4	AGE 4/6	AGE 6/8	AGE 8/10	AGE 10/12	AGE 12/14
A : Chest Width		22 - 24"	24 - 26"	25 - 27"	27 - 29"	29 - 31"
B : Waist		21 - 23"	22 - 24"	23 - 25"	25 - 26"	25 - 27"
C : Hips		22 - 24"	24 - 26"	26 - 28"	28 - 30"	30 - 32"
Height (Size)		3'3" - 3'11"	3'9" - 4'4"	4'1" - 4'9"	4'5" - 5'1"	4'7" - 5'5"

SIZES	XS	S	M	L	XL	XXL
A : Chest Width	31 - 33"	33 - 36"	36 - 38"	38 - 41"	41 - 44"	
B : Waist	26 - 28"	28 - 30"	30 - 32"	32 - 34"	34 - 36"	
C : Hips	32 - 34"	34 - 36"	36 - 38"	38 - 40"	40 - 42"	
Height (Size)	5'1" - 5'6"	5'3" - 5'9"	5'6" - 6'	5'9" - 6'3"	6' - 6'5"	



Wear Mei

[www.wearmoi.com](http://www.wearmoi.com)