



Wear Mei

Designed in France

MEN
2022

« Made by dancers,
for dancers »



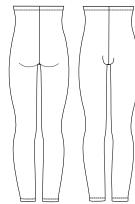




BASILE

Children : 4/6 - 6/8 - 8/10 - 10/12
Men : XS - S - M - L - XL

Men's microfiber footless tights with reinforced inseam gusset.
Microfiber



SOLO

Children : 4/6 - 6/8 - 8/10 - 10/12
Men : XS - S - M - L - XL

Heavyweight men footed tights with a ballet-style high waist.
Cotton Elasthan



ORION

Children : 4/6 - 6/8 - 8/10 - 10/12
Men : XS - S - M - L - XL

Heavy weight microfiber men's footed tights and a ballet waist.
Microfiber



HIDALGO

Children : 10/12
Men : XS - S - M - L - XL

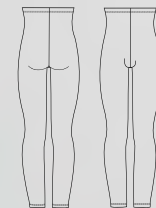
These heavyweight elastane convertible tights for men are the perfect answer to a male dancer's needs. A side opening at the foot allows an easy transition from footed tights to footless tights.
Microfiber



ALBAN

Children : 4/6 - 6/8 - 8/10 - 10/12
Men : XS - S - M - L - XL

Men's heavyweight elastane footless tights with reinforced inseam gusset.
Microfiber



ALBAN

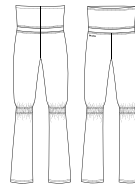




SACHA

Men : XS - S - M - L

Four-way stretch elastic pants with high waist for additional support. Tapered to the knee with a flair cut for a traditional jazz silhouette. Microfiber



BLACK



PRESTON

Children : 6/8 - 8/10 - 10/12 - 12/14

Men : XS - S - M - L

Men's warm-up pants with elastic waist band and drawstring. Wide leg for a more relaxed and comfortable fit. Double Viscose Elasthan Jersey



NAVY



BLACK

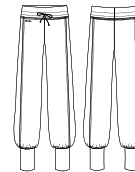


BELEM

Children : 6/8 - 8/10 - 10/12 - 12/14

Men : XS - S - M - L

Men's cut four-way stretch warm-up pants with fitted ankles and a drawstring for secure fit. Perfect for a dancer that wants to stay warm as well as travel uniform for your team or school. Pair with Malone jacket for a complete look. Double Viscose Elasthan Jersey



NAVY



BLACK

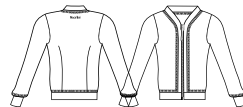


MALONE

Children : 6/8 - 8/10 - 10/12 - 12/14

Men : XS - S - M - L

Men's cut four-way stretch warm jacket with a front zip and double dart seams. Perfect for a dancer that wants to stay warm or can be used as a team uniform warm-up. Pair with Belem pants for a complete look. Double Viscose Elasthan Jersey



NAVY



BLACK



ALCYONE

Men : XS - S - M - L

Men's wide elastic 12,50cm waistband. Offering effortless support and a fitted silhouette. Elastic Elasthan



BLACK



DARK BEIGE

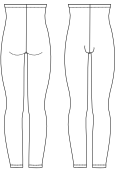


HAMADA

Children : 4/6 - 6/8 - 8/10 - 10/12

Men : XS - S - M - L - XL

This heavyweight footless tight for men features a ballet style high waist that can be rolled down, or worn with suspenders for class or performance. Cotton Elasthan



WHITE



GREY



BLACK



CLOVIS

Children : 4/6 - 6/8 - 8/10 - 10/12

Men : XS - S - M - L

These convertible tights for men are the perfect answer to a male dancer's needs. A comfortable opening under the arch and not across the foot, helps to stay comfortable and not have any seams under the foot. Cotton Elasthan



WHITE



GREY



BLACK



MALCOM

Children : 10/12

Men : XS - S - M - L - XL

These microfiber convertible tights for men are the perfect answer to a male dancer's needs. A side opening at the foot allows an easy transition from footed tights to footless tights. Microfiber



LIGHT GREY



DARK GREY



BURGUNDY



ROYAL BLUE



NAVY





ORION - IVAN



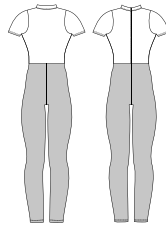
IVAN - SOLO



ELAN

Children : 6/8 - 8/10 - 10/12
Men : XS - S - M - L - XL

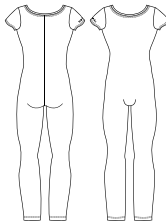
Men's two-tone footless unitard. High neck with zipper front. Cotton Elasthan



ATLAS

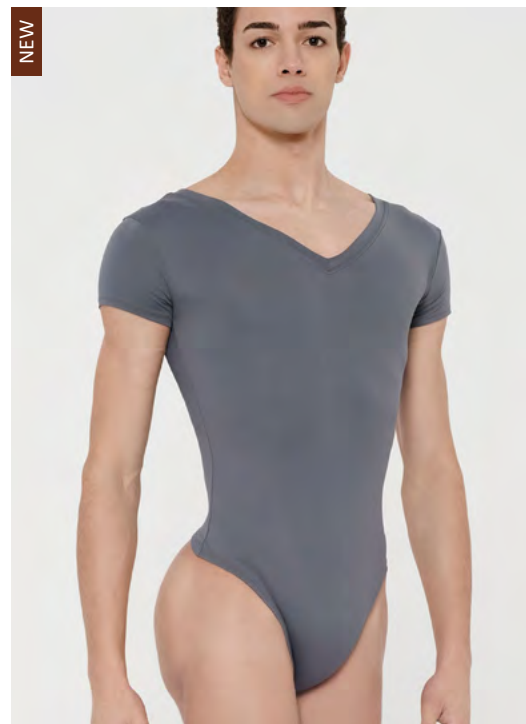
Children : 8/10 - 10/12 - 12/14
Men : XS - S - M - L - XL

Cap sleeved men's unitard with a wide neckline in front and back. Microfiber





NEW



CENTAUR



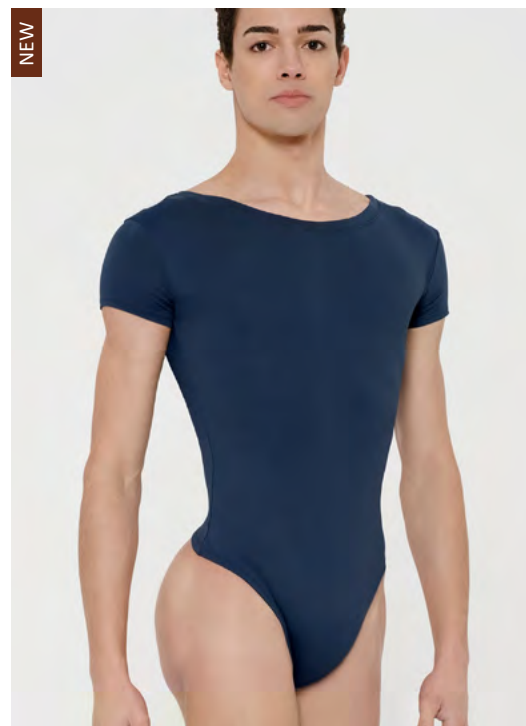
Children : 4/6 - 6/8 - 8/10 - 10/12 - 12/14
Men : XS - S - M - L - XL

This short-sleeved leotard with a V-neck checks all the boxes for ballet dancers. Designed with no cup in front, this men's leotard has a thong back so that it disappears under your tights. This product is cut from our elastane microfiber so it fits you like a second skin and gives you more range of motion.

Bonus feature: This leotard is invisible under your tights!
Microfiber



NEW



LUPIN



Children : 4/6 - 6/8 - 8/10 - 10/12 - 12/14
Men : XS - S - M - L - XL

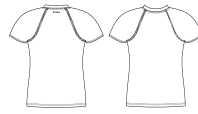
This short-sleeved leotard features a round neckline with subtle slits at the collar. It is a must-have for ballet class. It is made from elastane microfiber to give you maximum comfort. This men ballet leotard becomes a second skin, hugging your body to give you total freedom of movement. This product does not have a cup in front and it designed with a thong back so that it is imperceptible under your tights.

Bonus feature: This leotard will not create any lines under your tights!
Microfiber



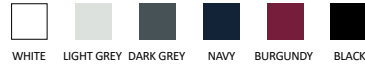


ALPIN



Children : 4/6 - 6/8 - 8/10 - 10/12 - 12/14
Men : XS - S - M - L - XL

Raglan sleeves scoop neckline t-shirt, fits tight and close to the body.
Microfiber



CONRAD



Children : 4/6 - 6/8 - 8/10 - 10/12 - 12/14
Men : XS - S - M - L

An ideal uniform staple, this crewneck cap sleeve men microfiber shirt is anything but basic.
Microfiber

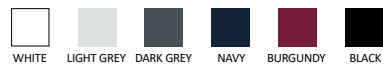


HAXO



Children : 4/6 - 6/8 - 8/10 - 10/12 - 12/14
Men : XS - S - M - L - XL

This soft microfiber, short sleeve, V-neck T-shirt is classic and exceptionally comfortable.
Microfiber

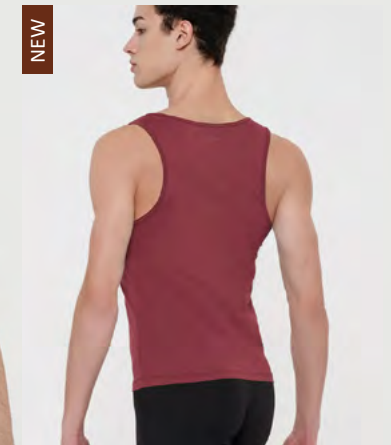
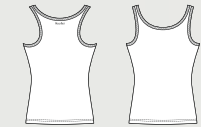


MERCURY



Children : 4/6 - 6/8 - 8/10 - 10/12 - 12/14
Men : XS - S - M - L - XL

This sleeveless tank top with a slightly low-cut rounded neckline is one of the essentials for your dance classes. In a swimmer style with wide openings at the back and tone-on-tone stitching.
The tapered fit guarantees maximum comfort for more freedom of movement.
Elastane Microfiber.



NEW



IGOR

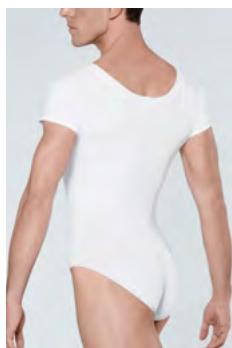
Children : 4/6 - 6/8 - 8/10 - 10/12 - 12/14
Men : XS - S - M - L



Wide neck men's leotard with cap sleeves. Full seat bottom without front padding.
Microfiber



WHITE BLACK



ALTAN

Children : 4/6 - 6/8 - 8/10 - 10/12
Men : XS - S - M - L



Men's full seat leotard. V-front cotton shirt, attached front padded full seat dance belt.
Cotton Elasthan



WHITE BLACK



HORACIO

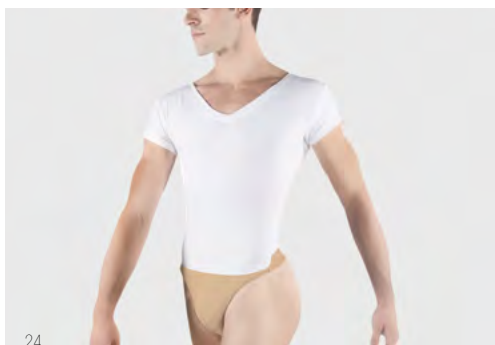
Children : 6/8 - 8/10 - 10/12 - 12/14
Men : XS - S - M - L - XL



One of the most requested items, full microfiber shirt and attached microfiber dance belt combination. An ideal uniform piece for all ages, perfect for class and stage.
Microfiber



WHITE LIGHT GREY DARK GREY BURGUNDY NAVY BLACK



IVAN

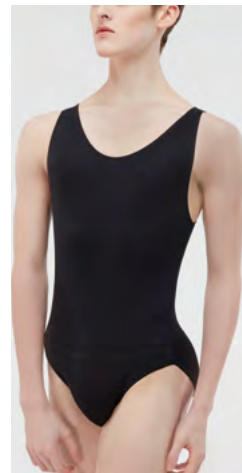
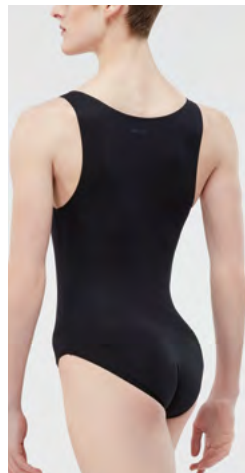
Children : 6/8 - 8/10 - 10/12
Men : XS - S - M - L - XL



Short sleeve V-neck cotton leotard features a built in fully front padded dance belt with thong back. An ideal uniform piece for all ages.
Cotton Elasthan



WHITE BLACK



OCTAVE

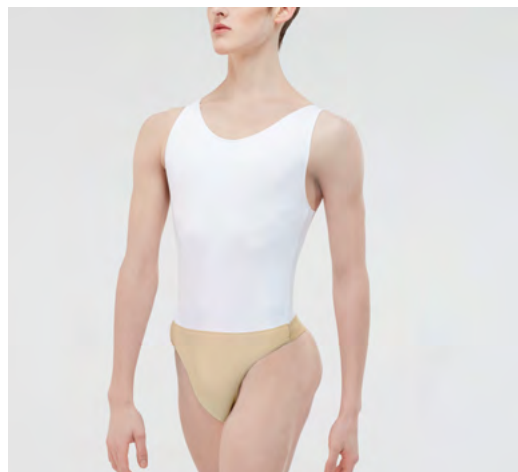
Children : 4/6 - 6/8 - 8/10 - 10/12 - 12/14
Men : XS - S - M - L



Microfiber basic men's full tank leotard with attached full seat dance belt.
Microfiber



WHITE BLACK



VERSAO

Children : 6/8 - 8/10 - 10/12 - 12/14
Men : XS - S - M - L



Microfiber basic men's full tank leotard with attached thong back dance belt.
Microfiber

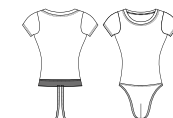


WHITE LIGHT GREY DARK GREY BURGUNDY ROYAL BLUE NAVY BLACK



JASON

Children : 6/8 - 8/10 - 10/12 - 12/14
Men : XS - S - M - L - XL



Short sleeve leotard with wide front and back scoop neck and built in dancebelt with thong back.
Microfiber

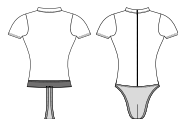


WHITE LIGHT GREY DARK GREY NAVY BURGUNDY BLACK



OBERON

Children : 6/8 - 8/10 - 10/12 - 12/14
Men : XS - S - M - L - XL

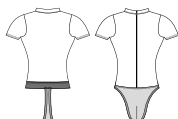


Short sleeve leotard with zippered front mock turtleneck and built in dancebelt with thong back.
Microfiber



CONDOR

Children : 6/8 - 8/10 - 10/12
Men : XS - S - M - L - XL

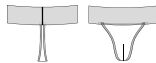


Perfect for ballroom and ballet, this short sleeve mock turtleneck leotard with functional low zip front features a built-in fully padded dance belt with a thong back.
Cotton Elasthan





DANCE BELT EXTRA WIDE



Men : XS - S - M - L - XL

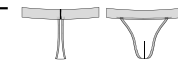
Cotton elastane fully padded dance belt featuring a thong back and 12,5cm comfortable extra-wide elastic for added support.
Cotton Elasthan



DARK BEIGE BLACK



DANCE BELT NARROW



Children : 8/10 - 10/12 - 12/14

Men : XS - S - M - L - XL

Cotton elastane fully padded dance belt features a thong back and 4cm soft touch elastic for comfort. Runs true to size.
Cotton Elasthan



DARK BEIGE WALNUT BLACK



DANCE BELT FULL SEAT



Children : 4/6 - 6/8 - 8/10 - 10/12 - 12/14

Men : XS - S - M - L - XL

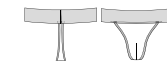
Boys/Men's full back dance belt. Features 4cm elastic waistband, contoured front shaped to the male anatomy and full front padding.
Cotton Elasthan



DARK BEIGE WALNUT



DANCE BELT WIDE

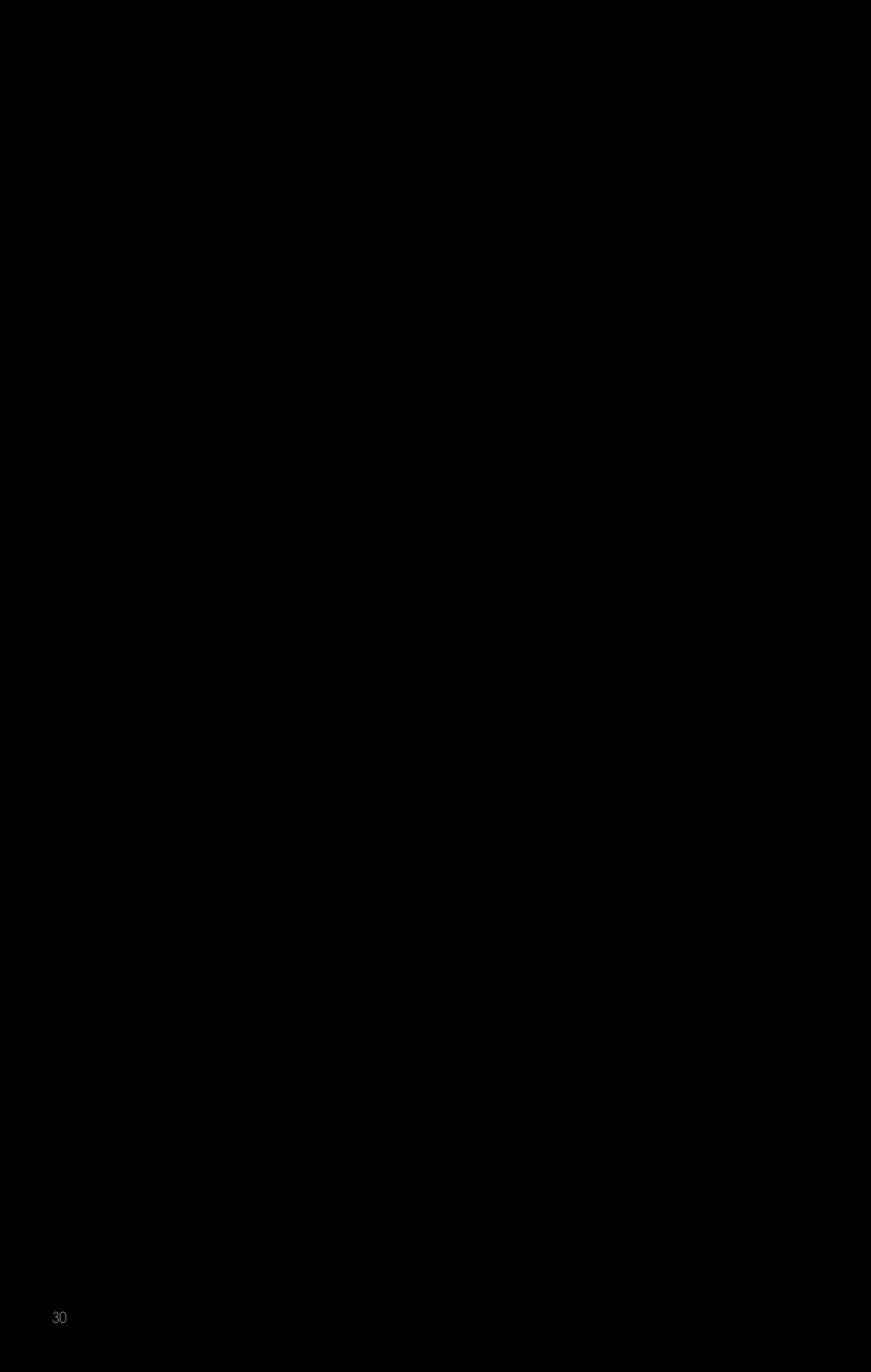


Men : XS - S - M - L - XL

Cotton elastane fully padded dance belt features a thong back and 7,2cm soft touch elastic for comfort. Runs true to size.
Cotton Elasthan



DARK BEIGE WALNUT BLACK



CAPRI 

Men : XS - S - M - L

Men's mock turtleneck, sleeveless
biketard featuring a soft front zipper
edging detail and a men's leg cut.
Microfiber

BLACK
NAVYBLACK
CHOCOLATETANGO 

Children : 8/10 - 10/12

Men : XS - S - M - L

This men's microfiber, racerback,
tank, biketard with men's leg cut
features shorter leg length and is
great fitting for men.
Microfiber



DARK GREY



BURGUNDY



NAVY



BLACK





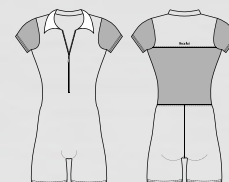
ROMEO

Men : XS - S - M - L

This unique men's fashion unitard incorporates the perfect blend of microfiber and four-way stretch mesh sleeves and back panel. Polo collar with front zip. No front seam. Microfiber- Stretch tulle

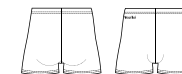


DARK GREY BLACK NAVY





MARCEAU



Children : 6/8 - 8/10 - 10/12
Men : XS - S - M - L

Basic men's fitted dance short with four-way stretch.
Microfiber



BEIGE LIGHT GREY DARK GREY BURGUNDY WALNUT ROYAL BLUE NAVY BLACK



PACO

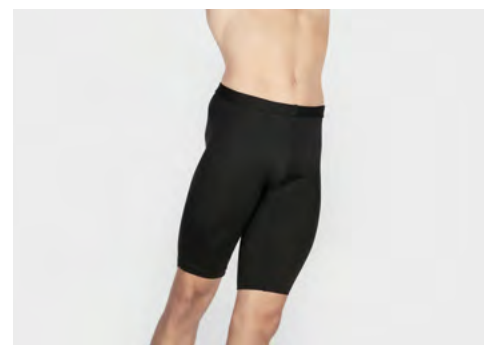


Children : 6/8 - 8/10 - 10/12
Men : XS - S - M - L

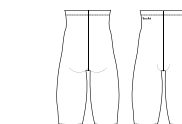
Men's leg cut, cotton shorter length shorts that include a comfortable elastic waistband.
Cotton Elasthan



BLACK



ODEON



Children : 4/6 - 6/8 - 8/10 - 10/12
Men : XS - S - M - L

This men's microfiber over-the-knee dance pants is a perfect uniform option. Reinforced inseam gusset and secure waist elastic.
Microfiber



LIGHT GREY DARK GREY BURGUNDY ROYAL BLUE NAVY BLACK



LORCA



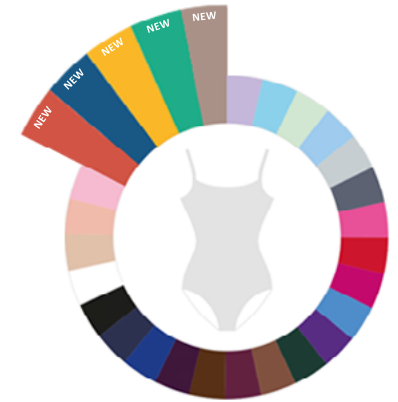
Children : 4/6 - 6/8 - 8/10 - 10/12
Men : XS - S - M - L

Men's athletic short with a thin waistband, loose fit and maximum flexibility.
Microfiber



BLACK

MORE COLOR CHOICE

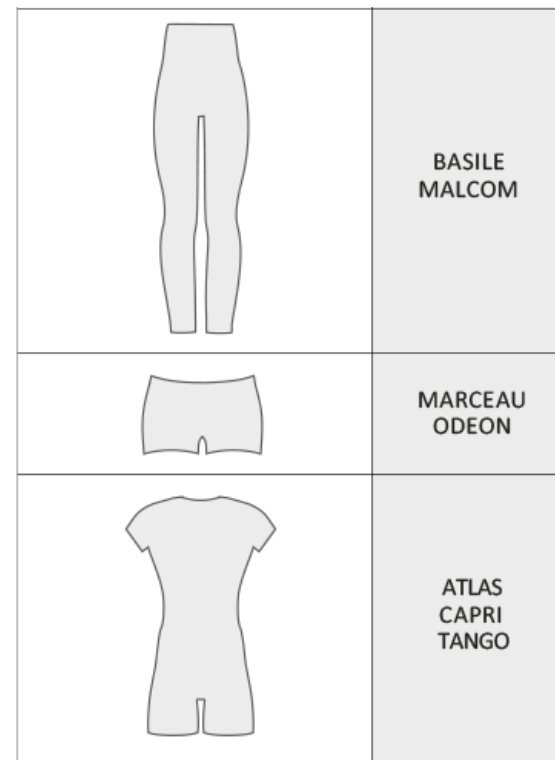
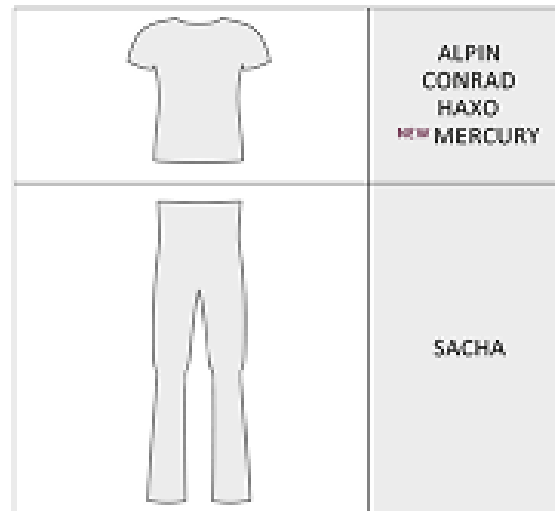


2022 NEW COLORS

1. Choose Color



2. Choose Style



*Not available in Walnut and Chocolate.

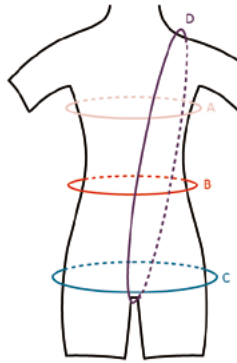


INDEX

	ALBAN	p 7
	ALCYONE	p 11
	ALPIN	p 22
	ALTAN	p 24
	ATLAS	p 16
	BASILE	p 6
	BELEM	p 10
	CAPRI	p 33
NEW	CENTAUR	p 21
	CLOVIS	p 11
	CONDOR	p 26
	CONRAD	p 22
	DANCE BELT EXTRA W	p 28
	DANCE BELT FULL SEAT	p 28
	DANCE BELT NARROW	p 29
	DANCE BELT WIDE	p 29
	ELAN	p 16
	HAMADA	p 11
	HAXO	p 22
	HIDALGO	p 6
	HORACIO	p 24
	IGOR	p 24

	IVAN	p 24
	JASON	p 25
	LORCA	p 37
NEW	LUPIN	p 21
	MALCOM	p 11
	MALONE	p 10
	MARCEAU	p 37
NEW	MERCURY	p 23
	OBERON	p 26
	OCTAVE	p 25
	ODEON	p 37
	ORION	p 6
	PACO	p 37
	PRESTON	p 10
	ROMEO	p 35
	SACHA	p 10
	SOLO	p 6
	TANGO	p 33
	VERSAO	p 25
	MORE COLOR CHOICE	p 38-39
	SIZE CHART	p 42-43

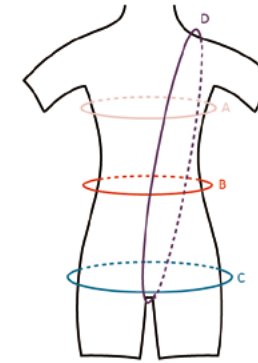
SIZE CHART IN CM



SIZES	AGE 2/4	AGE 4/6	AGE 6/8	AGE 8/10	AGE 10/12	AGE 12/14
A : Chest Width		55 - 60 cm	60 - 65 cm	64 - 69 cm	68 - 75 cm	72 - 79 cm
B : Waist		52 - 57 cm	56 - 60 cm	59 - 63 cm	62 - 65 cm	64 - 68 cm
C : Hips		55 - 60 cm	60 - 65 cm	65 - 70 cm	71 - 78 cm	75 - 80 cm
D : Girth		90 - 100 cm	100 - 110 cm	110 - 120 cm	115 - 125 cm	125 - 135 cm
Height (Size)		100 - 120 cm	113 - 133 cm	124 - 144 cm	135 - 155 cm	140 - 165 cm

SIZES	XS	S	M	L	XL	XXL
A : Chest Width	76 - 83 cm	83 - 91 cm	91 - 97 cm	97 - 104 cm	104 - 110 cm	110 - 120 cm
B : Waist	65 - 70 cm	70 - 75 cm	75 - 80 cm	80 - 85 cm	85 - 90 cm	90 - 95 cm
C : Hips	80 - 85 cm	85 - 90 cm	90 - 95 cm	95 - 100 cm	100 - 105 cm	105 - 110 cm
D : Girth	130 - 140 cm	140 - 150 cm	150 - 160 cm	160 - 170 cm	165 - 175 cm	170 - 180 cm
Height (Size)	154 - 168 cm	161 - 175 cm	168 - 182 cm	175 - 189 cm	182 - 196 cm	190 - 200 cm

SIZE CHART IN INCHES



SIZES	AGE 2/4	AGE 4/6	AGE 6/8	AGE 8/10	AGE 10/12	AGE 12/14
A : Chest Width		22 - 24"	24 - 26"	25 - 27"	27 - 29"	29 - 31"
B : Waist		21 - 23"	22 - 24"	23 - 25"	25 - 26"	25 - 27"
C : Hips		22 - 24"	24 - 26"	26 - 28"	28 - 30"	30 - 32"
D : Girth		35 - 39"	39 - 43"	43 - 47"	45 - 49"	49 - 53"
Height (Size)		3'3" - 3'11"	3'9" - 4'4"	4'1" - 4'9"	4'5" - 5'1"	4'7" - 5'5"

SIZES	XS	S	M	L	XL	XXL
A : Chest Width	31 - 33"	33 - 36"	36 - 38"	38 - 41"	41 - 44"	43 - 47"
B : Waist	26 - 28"	28 - 30"	30 - 32"	32 - 34"	34 - 36"	35 - 37"
C : Hips	32 - 34"	34 - 36"	36 - 38"	38 - 40"	40 - 42"	41 - 43"
D : Girth	51 - 55	55 - 59	59 - 63	63 - 67	65 - 69	67 - 71
Height (Size)	5'1" - 5'6"	5'3" - 5'9"	5'6" - 6'	5'9" - 6'3"	6' - 6'5"	7' - 7'5"

Wear Moi

375 Avenue St Just – Lot 6 et 7

83130 La Garde – FRANCE

Phone : +33 (0) 498 01 6000 – Fax : +33 (0) 498 01 6001

Email : info@wearmoi.com

Wear Moi (North, Central and South America)

3352 N Broadway – Chicago IL 60657 – USA

Phone : +1 (773) 850 3119 – Fax : +1 (773) 901 2167

Email : usa@wearmoi.com



2022 ·
Wear Mei
Designed in France